

CANX Antibody
Purified Rabbit Polyclonal Antibody (Pab)
Catalog # AP50720**Specification**

CANX Antibody - Product Information

Application	WB
Primary Accession	P27824
Reactivity	Human, Mouse, Rat
Host	Rabbit
Clonality	Polyclonal
Calculated MW	68 KDa
Antigen Region	532-592

CANX Antibody - Additional Information**Gene ID** 821**Other Names**

Calnexin, IP90, Major histocompatibility complex class I antigen-binding protein p88, p90, CANX

Dilution

WB~~ 1:1000

Storage

Store at -20 °C. Stable for 12 months from date of receipt

CANX Antibody - Protein Information**Name** CANX**Function**

Calcium-binding protein that interacts with newly synthesized monoglucosylated glycoproteins in the endoplasmic reticulum. It may act in assisting protein assembly and/or in the retention within the ER of unassembled protein subunits. It seems to play a major role in the quality control apparatus of the ER by the retention of incorrectly folded proteins. Associated with partial T-cell antigen receptor complexes that escape the ER of immature thymocytes, it may function as a signaling complex regulating thymocyte maturation. Additionally it may play a role in receptor-mediated endocytosis at the synapse.

Cellular Location

Endoplasmic reticulum membrane; Single-pass type I membrane protein. Mitochondrion membrane {ECO:0000250|UniProtKB:P24643}; Single-pass type I membrane protein. Melanosome membrane; Single-pass type I membrane protein. Note=Identified by mass spectrometry in melanosome fractions from stage I to stage IV (PubMed:12643545, PubMed:17081065). The palmitoylated form preferentially localizes to the perinuclear rough ER (PubMed:22314232) Localizes to endoplasmic reticulum mitochondria-associated membrane (MAMs) that connect the endoplasmic reticulum and the mitochondria (By similarity). {ECO:0000250|UniProtKB:P24643,

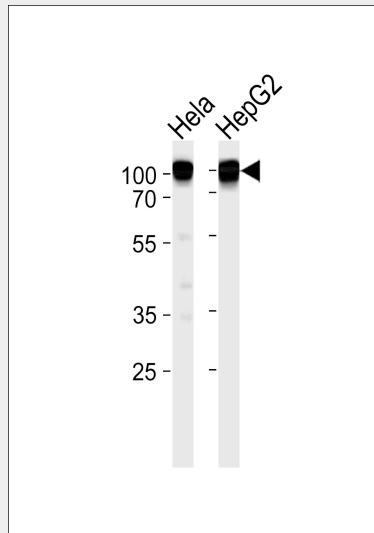
ECO:0000269|PubMed:12643545, ECO:0000269|PubMed:17081065,
ECO:0000269|PubMed:22314232}

CANX Antibody - Protocols

Provided below are standard protocols that you may find useful for product applications.

- [Western Blot](#)
- [Blocking Peptides](#)
- [Dot Blot](#)
- [Immunohistochemistry](#)
- [Immunofluorescence](#)
- [Immunoprecipitation](#)
- [Flow Cytometry](#)
- [Cell Culture](#)

CANX Antibody - Images



Western blot analysis of lysates from HeLa, HepG2 cell line (from left to right), using CANX Antibody was diluted at 1:1000 at each lane. A goat anti-rabbit IgG H&L (HRP) at 1:5000 dilution was used as the secondary antibody. Lysates at 35ug per lane.

CANX Antibody - Background

Calcium-binding protein that interacts with newly synthesized glycoproteins in the endoplasmic reticulum. It may act in assisting protein assembly and/or in the retention within the ER of unassembled protein subunits. It seems to play a major role in the quality control apparatus of the ER by the retention of incorrectly folded proteins. Associated with partial T-cell antigen receptor complexes that escape the ER of immature thymocytes, it may function as a signaling complex regulating thymocyte maturation. Additionally it may play a role in receptor-mediated endocytosis at the synapse.

CANX Antibody - References

David V., et al. *J. Biol. Chem.* 268:9585-9592(1993).
Tjoelker L.W., et al. *Biochemistry* 33:3229-3236(1994).
Honore B., et al. *Electrophoresis* 15:482-490(1994).

Hansen J.J.,et al.Submitted (FEB-2000) to the EMBL/GenBank/DDBJ databases.
Ota T.,et al.Nat. Genet. 36:40-45(2004).