

EEF1B2 Antibody
Purified Rabbit Polyclonal Antibody (Pab)
Catalog # AP50716**Specification**

EEF1B2 Antibody - Product Information

Application	WB
Primary Accession	P24534
Reactivity	Human, Mouse, Rat
Host	Rabbit
Clonality	Polyclonal
Calculated MW	25 KDa
Antigen Region	103-163

EEF1B2 Antibody - Additional Information**Gene ID** 1933**Other Names**

Elongation factor 1-beta, EF-1-beta, EEF1B2, EEF1B, EF1B

Dilution

WB~~ 1:500-1:1000

Storage

Store at -20 °C. Stable for 12 months from date of receipt

EEF1B2 Antibody - Protein Information**Name** EEF1B2**Synonyms** EEF1B, EF1B**Function**

EF-1-beta and EF-1-delta stimulate the exchange of GDP bound to EF-1-alpha to GTP.

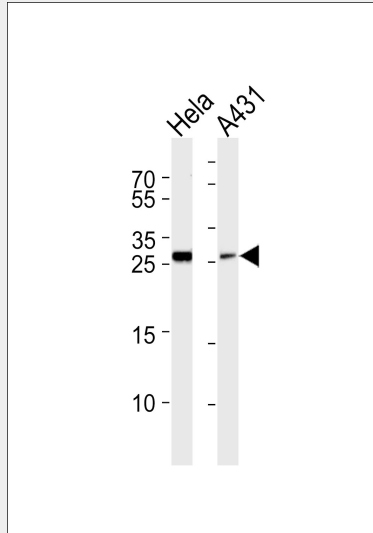
EEF1B2 Antibody - Protocols

Provided below are standard protocols that you may find useful for product applications.

- [Western Blot](#)
- [Blocking Peptides](#)
- [Dot Blot](#)
- [Immunohistochemistry](#)
- [Immunofluorescence](#)
- [Immunoprecipitation](#)

- [Flow Cytometry](#)
- [Cell Culture](#)

EEF1B2 Antibody - Images



Western blot analysis of lysates from HeLa, A431 cell line (from left to right), using EEF1B2 Antibody was diluted at 1:500-1:1000 at each lane. A goat anti-rabbit IgG H&L (HRP) at 1:5000 dilution was used as the secondary antibody. Lysates at 35 µg per lane.

EEF1B2 Antibody - Background

EF-1-beta and EF-1-delta stimulate the exchange of GDP bound to EF-1-alpha to GTP.

EEF1B2 Antibody - References

- Sanders J., et al. *Nucleic Acids Res.* 19:4551-4551(1991).
von der Kammer H., et al. *Biochem. Biophys. Res. Commun.* 177:312-317(1991).
Kalnina N., et al. Submitted (MAY-2003) to the EMBL/GenBank/DDBJ databases.
Ebert L., et al. Submitted (JUN-2004) to the EMBL/GenBank/DDBJ databases.
Ota T., et al. *Nat. Genet.* 36:40-45(2004).