

NDUFA8 Antibody
Purified Rabbit Polyclonal Antibody (Pab)
Catalog # AP50708**Specification**

NDUFA8 Antibody - Product Information

Application	WB, IHC
Primary Accession	P51970
Reactivity	Human
Host	Rabbit
Clonality	Polyclonal
Calculated MW	20 KDa
Antigen Region	121-150

NDUFA8 Antibody - Additional Information**Gene ID** 4702**Other Names**

NADH dehydrogenase [ubiquinone] 1 alpha subcomplex subunit 8, Complex I-19kD, CI-19kD, Complex I-PGIV, CI-PGIV, NADH-ubiquinone oxidoreductase 19 kDa subunit, NDUFA8

DilutionWB~~1:1000
IHC~~1:50-100**Format**Rabbit IgG in phosphate buffered saline (without Mg²⁺ and Ca²⁺), pH 7.4, 150mM NaCl, 0.09% (W/V) sodium azide and 50% glycerol.**Storage Conditions**

-20°C

NDUFA8 Antibody - Protein Information**Name** NDUFA8**Function**

Accessory subunit of the mitochondrial membrane respiratory chain NADH dehydrogenase (Complex I), that is believed not to be involved in catalysis (PubMed:27626371, PubMed:32385911, PubMed:33153867). Complex I functions in the transfer of electrons from NADH to the respiratory chain (PubMed:27626371). The immediate electron acceptor for the enzyme is believed to be ubiquinone (PubMed:27626371).

Cellular Location

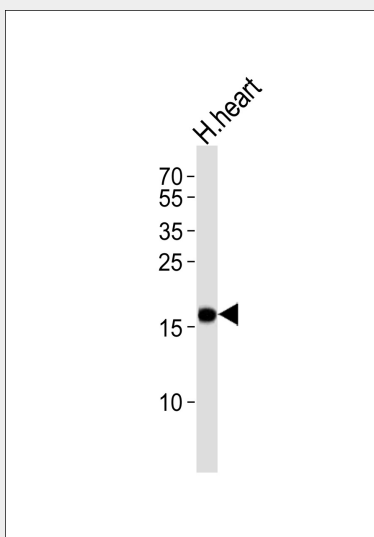
Mitochondrion inner membrane; Peripheral membrane protein. Mitochondrion intermembrane space. Mitochondrion

NDUFA8 Antibody - Protocols

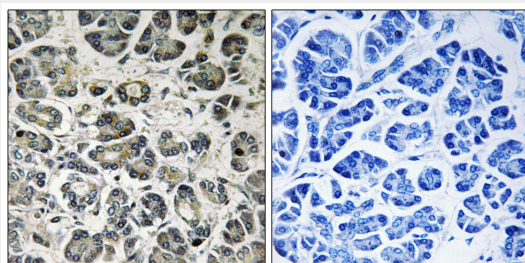
Provided below are standard protocols that you may find useful for product applications.

- [Western Blot](#)
- [Blocking Peptides](#)
- [Dot Blot](#)
- [Immunohistochemistry](#)
- [Immunofluorescence](#)
- [Immunoprecipitation](#)
- [Flow Cytometry](#)
- [Cell Culture](#)

NDUFA8 Antibody - Images



Western blot analysis of lysate from human heart tissue lysate, using NDUFA8 Antibody (AP50708). AP50708 was diluted at 1:1000. A goat anti-rabbit IgG H&L (HRP) at 1:5000 dilution was used as the secondary antibody. Lysate at 35ug.



Immunohistochemistry analysis of paraffin-embedded human pancreas tissue using NDUFA8 antibody.

NDUFA8 Antibody - Background

Accessory subunit of the mitochondrial membrane respiratory chain NADH dehydrogenase (Complex I), that is believed not to be involved in catalysis. Complex I functions in the transfer of electrons from NADH to the respiratory chain. The immediate electron acceptor for the enzyme is believed to be ubiquinone.

NDUFA8 Antibody - References

- Triepels R., et al. Hum. Genet. 103:557-563(1998).
Ota T., et al. Nat. Genet. 36:40-45(2004).
Humphray S.J., et al. Nature 429:369-374(2004).
Mural R.J., et al. Submitted (JUL-2005) to the EMBL/GenBank/DDBJ databases.
Sarto C., et al. Electrophoresis 18:599-604(1997).