

TRAPPC3 Antibody
Purified Rabbit Polyclonal Antibody (Pab)
Catalog # AP50706

Specification

TRAPPC3 Antibody - Product Information

Application	WB
Primary Accession	O43617
Reactivity	Human, Mouse, Rat
Host	Rabbit
Clonality	Polyclonal
Calculated MW	20,15 KDa
Antigen Region	154-180

TRAPPC3 Antibody - Additional Information

Gene ID 27095

Other Names

Trafficking protein particle complex subunit 3, BET3 homolog, TRAPPC3, BET3

Dilution

WB~~1:1000

Format

Rabbit IgG in phosphate buffered saline (without Mg²⁺ and Ca²⁺), pH 7.4, 150mM NaCl, 0.09% (W/V) sodium azide and 50% glycerol.

Storage Conditions

-20°C

TRAPPC3 Antibody - Protein Information

Name TRAPPC3 {ECO:0000303|PubMed:19416478, ECO:0000312|HGNC:HGNC:19942}

Function

May play a role in vesicular transport from endoplasmic reticulum to Golgi.

Cellular Location

Golgi apparatus, cis-Golgi network. Endoplasmic reticulum

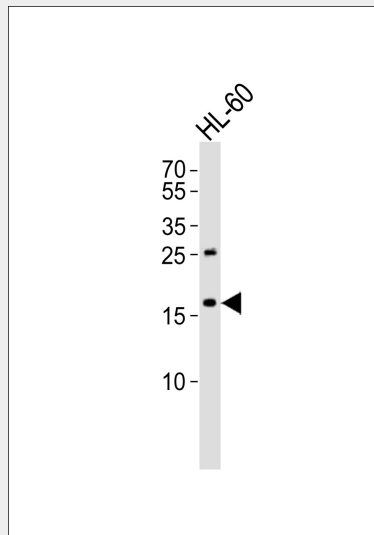
TRAPPC3 Antibody - Protocols

Provided below are standard protocols that you may find useful for product applications.

- [Western Blot](#)

- [Blocking Peptides](#)
- [Dot Blot](#)
- [Immunohistochemistry](#)
- [Immunofluorescence](#)
- [Immunoprecipitation](#)
- [Flow Cytometry](#)
- [Cell Culture](#)

TRAPPC3 Antibody - Images



Western blot analysis of lysate from HL-60 cell line, using TRAPPC3 Antibody (AP50706). AP50706 was diluted at 1:1000. A goat anti-rabbit IgG H&L (HRP) at 1:5000 dilution was used as the secondary antibody. Lysate at 35ug.

TRAPPC3 Antibody - Background

May play a role in vesicular transport from endoplasmic reticulum to Golgi.

TRAPPC3 Antibody - References

- Sacher M., et al. EMBO J. 17:2494-2503 (1998).
Eva L., et al. Submitted (JAN-1998) to the EMBL/GenBank/DDBJ databases.
Zhou J., et al. Submitted (JUL-2000) to the EMBL/GenBank/DDBJ databases.
Ota T., et al. Nat. Genet. 36:40-45 (2004).
Gregory S.G., et al. Nature 441:315-321 (2006).