

**PSMAL Antibody (Center)**  
**Affinity Purified Rabbit Polyclonal Antibody (Pab)**  
**Catalog # AP5068c**

**Specification**

---

**PSMAL Antibody (Center) - Product Information**

Application	WB, IHC-P, FC,E
Primary Accession	<a href="#">O9HBA9</a>
Other Accession	<a href="#">Q04609</a>
Reactivity	Human
Host	Rabbit
Clonality	Polyclonal
Isotype	Rabbit IgG
Calculated MW	50045
Antigen Region	155-183

**PSMAL Antibody (Center) - Additional Information**

**Other Names**

Putative N-acetylated-alpha-linked acidic dipeptidase, NAALADase, 34--, Cell growth-inhibiting gene 26 protein, Prostate-specific membrane antigen-like protein, Putative folate hydrolase 1B, FOLH1B, PSMAL

**Target/Specificity**

This PSMAL antibody is generated from rabbits immunized with a KLH conjugated synthetic peptide between 155-183 amino acids from the Central region of human PSMAL.

**Dilution**

WB~~1:1000  
IHC-P~~1:25  
FC~~1:10~50

**Format**

Purified polyclonal antibody supplied in PBS with 0.09% (W/V) sodium azide. This antibody is purified through a protein A column, followed by peptide affinity purification.

**Storage**

Maintain refrigerated at 2-8°C for up to 2 weeks. For long term storage store at -20°C in small aliquots to prevent freeze-thaw cycles.

**Precautions**

PSMAL Antibody (Center) is for research use only and not for use in diagnostic or therapeutic procedures.

**PSMAL Antibody (Center) - Protein Information**

**Name** FOLH1B

### Synonyms PSMAL

**Function** Has both folate hydrolase and N-acetylated-alpha-linked- acidic dipeptidase (NAALADase) activity.

### Cellular Location

Cytoplasm.

### Tissue Location

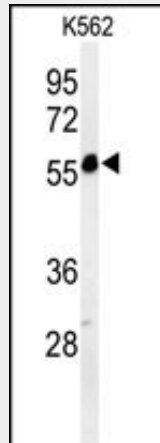
Kidney and liver. Not expressed in the prostate.

## PSMAL Antibody (Center) - Protocols

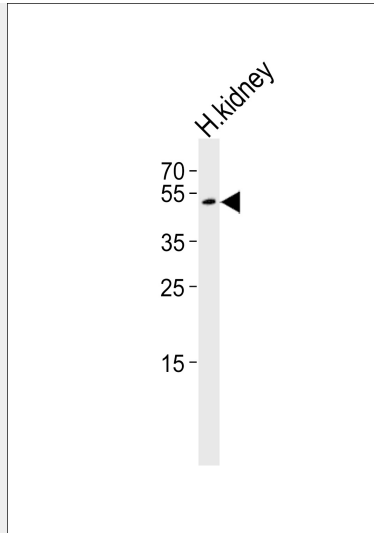
Provided below are standard protocols that you may find useful for product applications.

- [Western Blot](#)
- [Blocking Peptides](#)
- [Dot Blot](#)
- [Immunohistochemistry](#)
- [Immunofluorescence](#)
- [Immunoprecipitation](#)
- [Flow Cytometry](#)
- [Cell Culture](#)

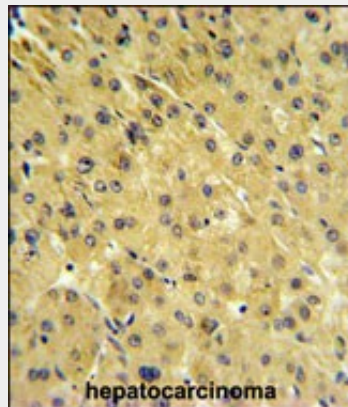
## PSMAL Antibody (Center) - Images



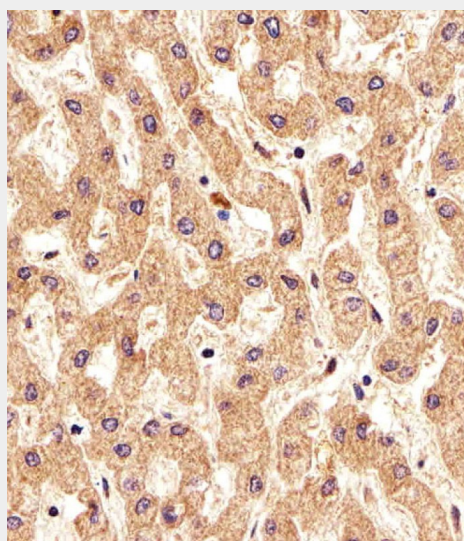
Western blot analysis of PSMAL Antibody (Center) (Cat. #AP5068c) in K562 cell line lysates (35ug/lane). PSMAL (arrow) was detected using the purified Pab.



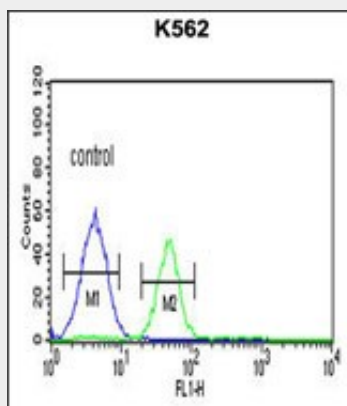
Western blot analysis of lysate from human kidney tissue lysate, using PSMAL Antibody (Center)(Cat. #AP5068c). AP5068c was diluted at 1:1000. A goat anti-rabbit IgG H&L(HRP) at 1:10000 dilution was used as the secondary antibody. Lysate at 35ug.



PSMAL Antibody (Center) (Cat. #AP5068c) IHC analysis in formalin fixed and paraffin embedded hepatocarcinoma followed by peroxidase conjugation of the secondary antibody and DAB staining. This data demonstrates the use of the PSMAL Antibody (Center) for immunohistochemistry. Clinical relevance has not been evaluated.



Immunohistochemical analysis of paraffin-embedded H. liver section using PSMAL Antibody (Center)(Cat#AP5068c). AP5068c was diluted at 1:25 dilution. A undiluted biotinylated goat polyvalent antibody was used as the secondary, followed by DAB staining.



PSMAL Antibody (Center) (Cat. #AP5068c) flow cytometric analysis of K562 cells (right histogram) compared to a negative control cell (left histogram). FITC-conjugated goat-anti-rabbit secondary antibodies were used for the analysis.

#### **PSMAL Antibody (Center) - Background**

PSMAL has both folate hydrolase and N-acetylated-alpha-linked-acidic dipeptidase (NAALADase) activity (By similarity). PSMAL exhibits a dipeptidyl-peptidase IV type activity

#### **PSMAL Antibody (Center) - References**

- O'Keefe, D.S., et al. Prostate 58(2):200-210(2004)
- O'Keefe, D.S., et al. Biochim. Biophys. Acta 1443 (1-2), 113-127 (1998)
- Maraj, B.H., et al. Cytogenet. Cell Genet. 81(1):3-9(1998)