

ES8L2 Antibody
Purified Rabbit Polyclonal Antibody (Pab)
Catalog # AP50687

Specification

ES8L2 Antibody - Product Information

Application	WB
Primary Accession	Q9H6S3
Reactivity	Human, Mouse
Host	Rabbit
Clonality	Polyclonal
Calculated MW	81,37,82 KDa
Antigen Region	28-53

ES8L2 Antibody - Additional Information

Gene ID 64787

Other Names

Epidermal growth factor receptor kinase substrate 8-like protein 2, EPS8-like protein 2, Epidermal growth factor receptor pathway substrate 8-related protein 2, EPS8-related protein 2, EPS8L2, EPS8R2

Dilution

WB~~ 1:1000

Format

Rabbit IgG in phosphate buffered saline (without Mg²⁺ and Ca²⁺), pH 7.4, 150mM NaCl, 0.09% (W/V) sodium azide and 50% glycerol.

Storage Conditions

-20°C

ES8L2 Antibody - Protein Information

Name EPS8L2

Synonyms EPS8R2

Function

Stimulates guanine exchange activity of SOS1. May play a role in membrane ruffling and remodeling of the actin cytoskeleton. In the cochlea, is required for stereocilia maintenance in adult hair cells (By similarity).

Cellular Location

Cytoplasm. Cell projection, stereocilium {ECO:0000250|UniProtKB:Q99K30}. Note=Localizes at the tips of the stereocilia of the inner and outer hair cells {ECO:0000250|UniProtKB:Q99K30}

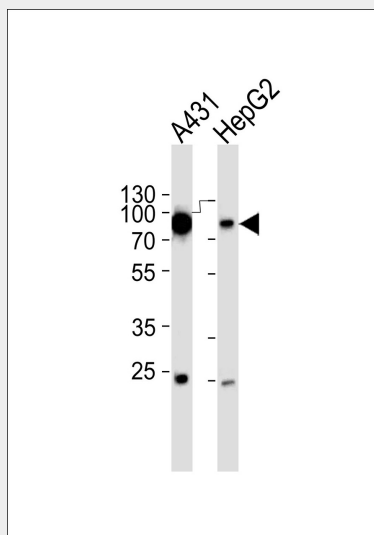
Tissue Location

Detected in fibroblasts and placenta.

ES8L2 Antibody - Protocols

Provided below are standard protocols that you may find useful for product applications.

- [Western Blot](#)
- [Blocking Peptides](#)
- [Dot Blot](#)
- [Immunohistochemistry](#)
- [Immunofluorescence](#)
- [Immunoprecipitation](#)
- [Flow Cytometry](#)
- [Cell Culture](#)

ES8L2 Antibody - Images

Western blot analysis of lysates from A431, HepG2 cell line (from left to right), using ES8L2 Antibody (AP50687). AP50687 was diluted at 1:1000 at each lane. A goat anti-rabbit IgG H&L (HRP) at 1:5000 dilution was used as the secondary antibody. Lysates at 35 µg per lane.

ES8L2 Antibody - Background

Stimulates guanine exchange activity of SOS1. May play a role in membrane ruffling and remodeling of the actin cytoskeleton.

ES8L2 Antibody - References

- Tocchetti A., et al. *Genomics* 81:234-244(2003).
Wan D., et al. *Proc. Natl. Acad. Sci. U.S.A.* 101:15724-15729(2004).
Ota T., et al. *Nat. Genet.* 36:40-45(2004).
Suzuki Y., et al. Submitted (APR-2005) to the EMBL/GenBank/DDBJ databases.
Offenhaeuser N., et al. *Mol. Biol. Cell* 15:91-98(2004).