

**NDUFV2 Antibody**  
**Purified Rabbit Polyclonal Antibody (Pab)**  
**Catalog # AP50682**

**Specification**

---

**NDUFV2 Antibody - Product Information**

Application	<b>WB</b>
Primary Accession	<a href="#">P19404</a>
Reactivity	<b>Human, Mouse, Rat</b>
Host	<b>Rabbit</b>
Clonality	<b>Polyclonal</b>
Calculated MW	<b>27 KDa</b>
Antigen Region	<b>32-60</b>

**NDUFV2 Antibody - Additional Information**

**Gene ID** 4729

**Other Names**

NADH dehydrogenase [ubiquinone] flavoprotein 2, mitochondrial, NADH-ubiquinone oxidoreductase 24 kDa subunit, NDUFV2

**Dilution**

WB~~1:1000

**Format**

Rabbit IgG in phosphate buffered saline (without Mg<sup>2+</sup> and Ca<sup>2+</sup>), pH 7.4, 150mM NaCl, 0.09% (W/V) sodium azide and 50% glycerol.

**Storage Conditions**

-20°C

**NDUFV2 Antibody - Protein Information**

**Name** NDUFV2 ([HGNC:7717](#))

**Function**

Core subunit of the mitochondrial membrane respiratory chain NADH dehydrogenase (Complex I) which catalyzes electron transfer from NADH through the respiratory chain, using ubiquinone as an electron acceptor (Probable). Parts of the peripheral arm of the enzyme, where the electrons from NADH are accepted by flavin mononucleotide (FMN) and then passed along a chain of iron-sulfur clusters by electron tunnelling to the final acceptor ubiquinone (Probable). Contains one iron-sulfur cluster (Probable).

**Cellular Location**

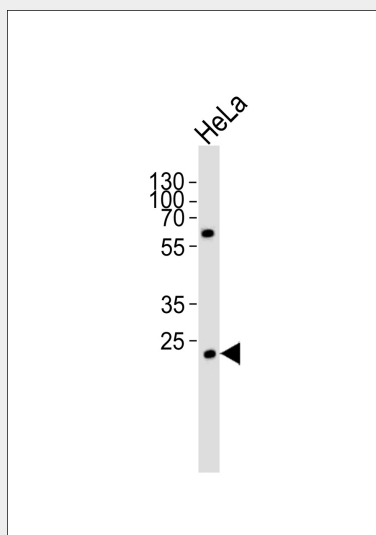
Mitochondrion inner membrane {ECO:0000250|UniProtKB:P04394}; Peripheral membrane protein {ECO:0000250|UniProtKB:P04394}; Matrix side {ECO:0000250|UniProtKB:P04394}

## NDUFV2 Antibody - Protocols

Provided below are standard protocols that you may find useful for product applications.

- [Western Blot](#)
- [Blocking Peptides](#)
- [Dot Blot](#)
- [Immunohistochemistry](#)
- [Immunofluorescence](#)
- [Immunoprecipitation](#)
- [Flow Cytometry](#)
- [Cell Culture](#)

## NDUFV2 Antibody - Images



Western blot analysis of lysate from HeLa cell line, using NDUFV2 Antibody (AP50682). AP50682 was diluted at 1:1000. A goat anti-rabbit IgG H&L (HRP) at 1:5000 dilution was used as the secondary antibody. Lysate at 35ug.

## NDUFV2 Antibody - Background

Core subunit of the mitochondrial membrane respiratory chain NADH dehydrogenase (Complex I) that is believed to belong to the minimal assembly required for catalysis. Complex I functions in the transfer of electrons from NADH to the respiratory chain. The immediate electron acceptor for the enzyme is believed to be ubiquinone (By similarity).

## NDUFV2 Antibody - References

- Pilkington S.J., et al. *Biochemistry* 28:3257-3264(1989).  
Murray J., et al. *J. Biol. Chem.* 278:13619-13622(2003).  
Burkard T.R., et al. *BMC Syst. Biol.* 5:17-17(2011).  
Ogura M., et al. *Biochem. J.* 447:281-289(2012).