

TF2E2 Antibody
Purified Rabbit Polyclonal Antibody (Pab)
Catalog # AP50681**Specification**

TF2E2 Antibody - Product Information

Application	WB, IHC
Primary Accession	P29084
Reactivity	Human, Mouse
Host	Rabbit
Clonality	Polyclonal
Calculated MW	33 KDa
Antigen Region	180-208

TF2E2 Antibody - Additional Information**Gene ID** 2961**Other Names**

Transcription initiation factor IIE subunit beta, TFIIE-beta, General transcription factor IIE subunit 2, GTF2E2, TF2E2

DilutionWB~~1:1000
IHC~~1:50-1:100**Format**Rabbit IgG in phosphate buffered saline (without Mg²⁺ and Ca²⁺), pH 7.4, 150mM NaCl, 0.09% (W/V) sodium azide and 50% glycerol.**Storage Conditions**

-20°C

TF2E2 Antibody - Protein Information**Name** GTF2E2**Synonyms** TF2E2**Function**

Recruits TFIID to the initiation complex and stimulates the RNA polymerase II C-terminal domain kinase and DNA-dependent ATPase activities of TFIID. Both TFIID and TFIIE are required for promoter clearance by RNA polymerase.

Cellular Location

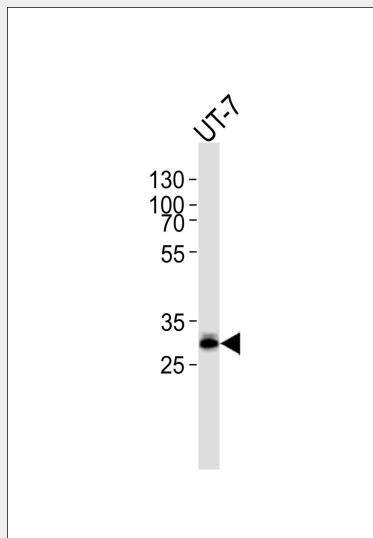
Nucleus.

TF2E2 Antibody - Protocols

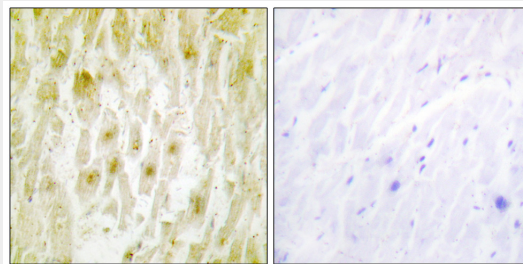
Provided below are standard protocols that you may find useful for product applications.

- [Western Blot](#)
- [Blocking Peptides](#)
- [Dot Blot](#)
- [Immunohistochemistry](#)
- [Immunofluorescence](#)
- [Immunoprecipitation](#)
- [Flow Cytometry](#)
- [Cell Culture](#)

TF2E2 Antibody - Images



Western blot analysis of lysate from UT-7 cell line, using TF2E2 Antibody (AP50681). AP50681 was diluted at 1:1000. A goat anti-rabbit IgG H&L (HRP) at 1:5000 dilution was used as the secondary antibody. Lysate at 35 µg.



Immunohistochemistry analysis of paraffin-embedded human heart tissue using TF2E2 antibody.

TF2E2 Antibody - Background

Recruits TFIIF to the initiation complex and stimulates the RNA polymerase II C-terminal domain kinase and DNA-dependent ATPase activities of TFIIF. Both TFIIF and TFIIE are required for promoter clearance by RNA polymerase.

TF2E2 Antibody - References

Peterson M.G., et al. Nature 354:369-373 (1991).

Sumimoto H.,et al.Nature 354:401-404(1991).

Schertzer M.,et al.Submitted (AUG-2000) to the EMBL/GenBank/DDBJ databases.

Mural R.J.,et al.Submitted (SEP-2005) to the EMBL/GenBank/DDBJ databases.

Kang S.-W.,et al.Genes Cells 5:251-263(2000).