

**TSPAN8 Antibody**  
**Purified Rabbit Polyclonal Antibody (Pab)**  
**Catalog # AP50676****Specification**

---

**TSPAN8 Antibody - Product Information**

Application	<b>IF, WB</b>
Primary Accession	<a href="#">P19075</a>
Reactivity	<b>Human</b>
Host	<b>Rabbit</b>
Clonality	<b>Polyclonal</b>
Calculated MW	<b>26(R&amp;D 35) KDa</b>
Antigen Region	<b>123-150</b>

**TSPAN8 Antibody - Additional Information****Gene ID** 7103**Other Names**

Tetraspanin-8, Tspan-8, Transmembrane 4 superfamily member 3, Tumor-associated antigen CO-029, TSPAN8, TM4SF3

**Dilution**

IF~~1:100

WB~~1:1000

**Format**Rabbit IgG in phosphate buffered saline (without Mg<sup>2+</sup> and Ca<sup>2+</sup>), pH 7.4, 150mM NaCl, 0.09% (W/V) sodium azide and 50% glycerol.**Storage Conditions**

-20°C

**TSPAN8 Antibody - Protein Information****Name** TSPAN8**Synonyms** TM4SF3**Function**

Structural component of specialized membrane microdomains known as tetraspanin-enriched microdomains (TERMs), which act as platforms for receptor clustering and signaling (PubMed:<a href="http://www.uniprot.org/citations/27180357" target="\_blank">27180357</a>, PubMed:<a href="http://www.uniprot.org/citations/36078095" target="\_blank">36078095</a>). Participates thereby in diverse biological functions such as cell signal transduction, migration and protein trafficking (PubMed:<a href="http://www.uniprot.org/citations/25761241" target="\_blank">25761241</a>). Promotes ADAM17-mediated TNF-alpha processing through recruitment of ADAM17 to tetraspanin-enriched micro-domains (TEMs) (PubMed:<a

<http://www.uniprot.org/citations/36078095> target="\_blank">36078095</a>). Forms a complex with RICTOR and integrin alpha3/ITGA3 to mediate mTORC2 activation and AKT1 phosphorylation leading to cell migration (PubMed:<a href="http://www.uniprot.org/citations/25761241" target="\_blank">25761241</a>). Reduces apoptosis and autophagy induced by high glucose levels through forming a complex with mTOR and RICTOR (PubMed:<a href="http://www.uniprot.org/citations/35904232" target="\_blank">35904232</a>). Contributes to the maintenance of intestinal epithelial barrier and plays a role in the regulation of intestine inflammation by switching interferon gamma receptor 1/IFNGR1 from clathrin-dependent to lipid raft-dependent endocytosis route to limit STAT1 activation magnitude and duration (PubMed:<a href="http://www.uniprot.org/citations/37204469" target="\_blank">37204469</a>). Acts as a modulator of the endothelin axis by associating with endothelin converting enzyme ECE1 and regulating its activity of conversion of the endothelin-1 precursor to endothelin (PubMed:<a href="http://www.uniprot.org/citations/37835445" target="\_blank">37835445</a>).

#### **Cellular Location**

Cell membrane; Multi-pass membrane protein

#### **Tissue Location**

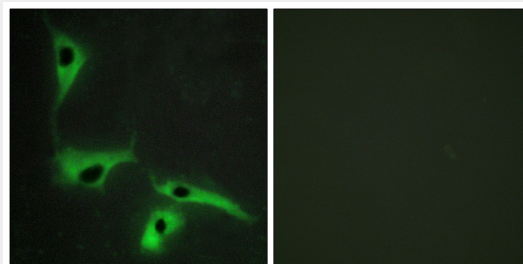
Gastric, colon, rectal, and pancreatic carcinomas.

### **TSPAN8 Antibody - Protocols**

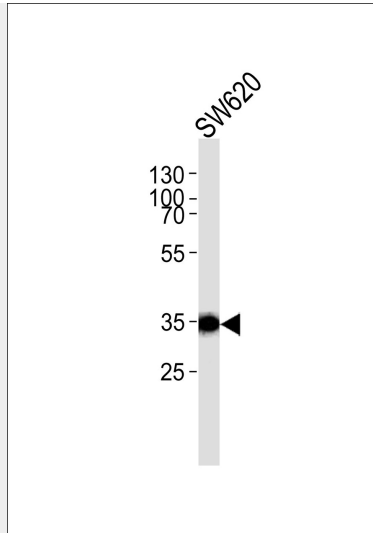
Provided below are standard protocols that you may find useful for product applications.

- [Western Blot](#)
- [Blocking Peptides](#)
- [Dot Blot](#)
- [Immunohistochemistry](#)
- [Immunofluorescence](#)
- [Immunoprecipitation](#)
- [Flow Cytometry](#)
- [Cell Culture](#)

### **TSPAN8 Antibody - Images**



Immunofluorescence analysis of HeLa cells, using TSPAN8 antibody.



Western blot analysis of lysate from SW620 cell line, using TSPAN8 Antibody (AP50676). AP50676 was diluted at 1:1000. A goat anti-rabbit IgG H&L (HRP) at 1:5000 dilution was used as the secondary antibody. Lysate at 35ug.

#### **TSPAN8 Antibody - References**

- Szala S., et al. Proc. Natl. Acad. Sci. U.S.A. 87:6833-6837(1990).
- Ota T., et al. Nat. Genet. 36:40-45(2004).
- Mural R.J., et al. Submitted (JUL-2005) to the EMBL/GenBank/DDBJ databases.
- Chen R., et al. J. Proteome Res. 8:651-661(2009).