

ERD22 Antibody
Affinity Purified Rabbit Polyclonal Antibody (Pab)
Catalog # AP50667**Specification**

ERD22 Antibody - Product Information

Application	IF, WB
Primary Accession	P33947
Reactivity	Human, Mouse, Rat
Host	Rabbit
Clonality	Polyclonal
Calculated MW	24 21 KDa
Antigen Region	90-125

ERD22 Antibody - Additional Information**Gene ID** 11014**Other Names**

ER lumen protein-retaining receptor 2, ERD2-like protein 1, ELP-1, KDEL endoplasmic reticulum protein retention receptor 2, KDEL receptor 2, KDELR2, ERD22

Dilution

IF~~1:100

WB~~1:1000

FormatRabbit IgG in phosphate buffered saline (without Mg²⁺ and Ca²⁺), pH 7.4, 150mM NaCl, 0.09% (W/V) sodium azide and 50% glycerol.**Storage Conditions**

-20°C

ERD22 Antibody - Protein Information**Name** KDELR2**Synonyms** ERD2.2 {ECO:0000303|PubMed:1325562}**Function**

Membrane receptor that binds the K-D-E-L sequence motif in the C-terminal part of endoplasmic reticulum resident proteins and maintains their localization in that compartment by participating to their vesicle-mediated recycling back from the Golgi (PubMed:1325562, PubMed:18086916, PubMed:33053334). Binding is pH dependent, and is optimal at pH 5-5.4 (By similarity).

Cellular Location

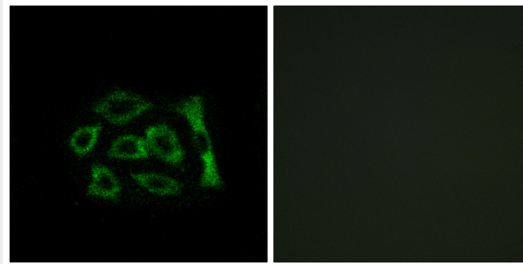
Endoplasmic reticulum membrane; Multi-pass membrane protein {ECO:0000250|UniProtKB:Q5ZKX9}. Golgi apparatus membrane; Multi-pass membrane protein {ECO:0000250|UniProtKB:Q5ZKX9}. Cytoplasmic vesicle, COPI-coated vesicle membrane; Multi-pass membrane protein {ECO:0000250|UniProtKB:Q5ZKX9} Note=Localized in the Golgi in the absence of bound proteins with the sequence motif K-D-E-L. Trafficks back to the endoplasmic reticulum together with cargo proteins containing the sequence motif K-D-E-L

ERD22 Antibody - Protocols

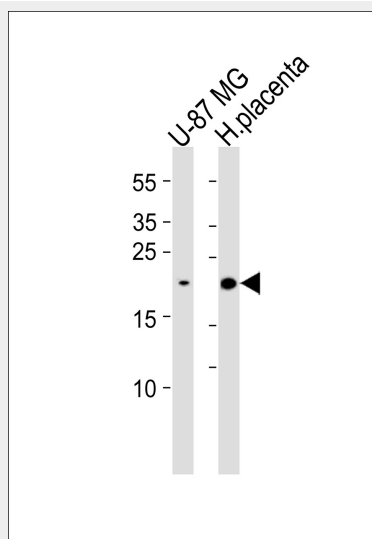
Provided below are standard protocols that you may find useful for product applications.

- [Western Blot](#)
- [Blocking Peptides](#)
- [Dot Blot](#)
- [Immunohistochemistry](#)
- [Immunofluorescence](#)
- [Immunoprecipitation](#)
- [Flow Cytometry](#)
- [Cell Culture](#)

ERD22 Antibody - Images



Immunofluorescence analysis of A549 cells, using ERD22 antibody.



Western blot analysis of lysates from U-87 MG cell line and human placenta tissue lysate (from left to right), using ERD22 Antibody (AP50667). AP50667 was diluted at 1:1000 at each lane. A goat anti-rabbit IgG H&L (HRP) at 1:5000 dilution was used as the secondary antibody. Lysates at 35ug

per lane.

ERD22 Antibody - Background

Required for the retention of luminal endoplasmic reticulum proteins. Determines the specificity of the luminal ER protein retention system. Also required for normal vesicular traffic through the Golgi. This receptor recognizes K-D-E-L.

ERD22 Antibody - References

Lewis M.J., et al. J. Mol. Biol. 226:913-916(1992).
Hsu V.W., et al. Cell 69:625-635(1992).
Ota T., et al. Nat. Genet. 36:40-45(2004).
Hillier L.W., et al. Nature 424:157-164(2003).
Scherer S.W., et al. Science 300:767-772(2003).