

Keratin 15 Antibody
Purified Rabbit Polyclonal Antibody (Pab)
Catalog # AP50666**Specification**

Keratin 15 Antibody - Product Information

Application	WB, IHC
Primary Accession	P19012
Reactivity	Human, Mouse, Rat
Host	Rabbit
Clonality	Polyclonal
Calculated MW	49 KDa
Antigen Region	8-36

Keratin 15 Antibody - Additional Information**Gene ID** 3866**Other Names**

Keratin, type I cytoskeletal 15, Cytokeratin-15, CK-15, Keratin-15, K15, KRT15, KRTB

DilutionWB~~1:1000
IHC~~1:50-1:100**Format**Rabbit IgG in phosphate buffered saline (without Mg²⁺ and Ca²⁺), pH 7.4, 150mM NaCl, 0.09% (W/V) sodium azide and 50% glycerol.**Storage Conditions**

-20°C

Keratin 15 Antibody - Protein Information**Name** KRT15**Synonyms** KRTB**Tissue Location**

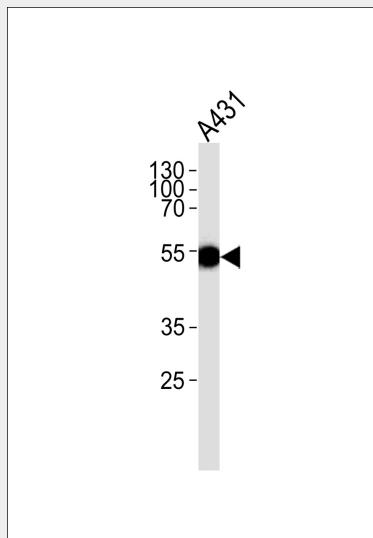
Expressed in a discontinuous manner in the basal cell layer of adult skin epidermis, but continuously in the basal layer of fetal skin epidermis and nail. Also expressed in the outer root sheath above the hair bulb in hair follicle (at protein level) Expressed homogeneously in all cell layers of the esophagus and exocervix, but detected in the basal cell layer only of oral mucosa, skin and in the basal plus the next two layers of the suprabasal epithelium of the palate.

Keratin 15 Antibody - Protocols

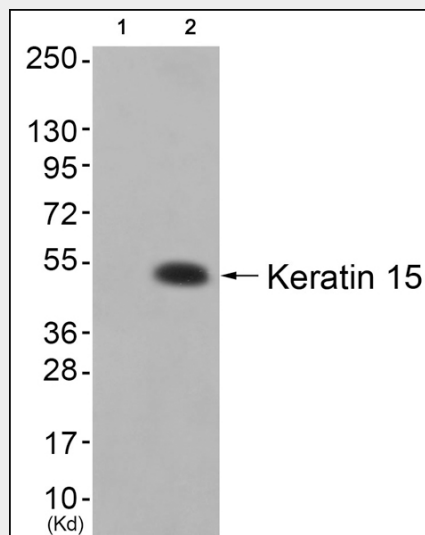
Provided below are standard protocols that you may find useful for product applications.

- [Western Blot](#)
- [Blocking Peptides](#)
- [Dot Blot](#)
- [Immunohistochemistry](#)
- [Immunofluorescence](#)
- [Immunoprecipitation](#)
- [Flow Cytometry](#)
- [Cell Culture](#)

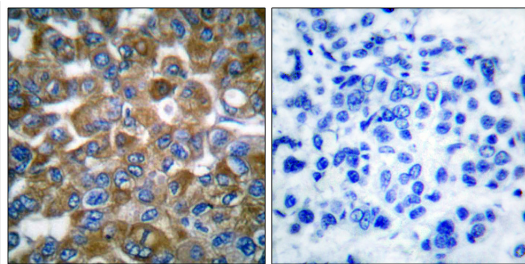
Keratin 15 Antibody - Images



Western blot analysis of lysate from A431 cell line, using Keratin 15 Antibody(AP50666). AP50666 was diluted at 1:1000. A goat anti-rabbit IgG H&L(HRP) at 1:5000 dilution was used as the secondary antibody. Lysate at 35ug.



Western blot analysis of extracts from colo cells (Lane 2), using Keratin 15 Antibody. The lane on the left is treated with synthesized peptide.



Immunohistochemical analysis of paraffin-embedded human breast carcinoma tissue using Keratin 15 antibody .

Keratin 15 Antibody - References

- Bader B.L.,et al.Eur. J. Cell Biol. 47:300-319(1988).
Leube R.E.,et al.J. Cell Biol. 106:1249-1261(1988).
Whittock N.V.,et al.Biochem. Biophys. Res. Commun. 267:462-465(2000).
Kalnine N.,et al.Submitted (MAY-2003) to the EMBL/GenBank/DDBJ databases.
Ota T.,et al.Nat. Genet. 36:40-45(2004).