

**CATL1 Antibody (heavy chain, Cleaved-Thr288)**  
**Purified Rabbit Polyclonal Antibody (Pab)**  
**Catalog # AP50654**

**Specification**

---

**CATL1 Antibody (heavy chain, Cleaved-Thr288) - Product Information**

Application	WB
Primary Accession	<a href="#">P07711</a>
Reactivity	Human
Host	Rabbit
Clonality	Polyclonal
Calculated MW	38 KDa
Antigen Region	275-295

**CATL1 Antibody (heavy chain, Cleaved-Thr288) - Additional Information**

**Gene ID** 1514

**Other Names**

Cathepsin L1, Cathepsin L, Major excreted protein, MEP, Cathepsin L1 heavy chain, Cathepsin L1 light chain, CTSL, CTSL1

**Dilution**

WB~~1:1000

**Format**

Rabbit IgG in phosphate buffered saline (without Mg<sup>2+</sup> and Ca<sup>2+</sup>), pH 7.4, 150mM NaCl, 0.09% (W/V) sodium azide and 50% glycerol.

**Storage Conditions**

-20°C

**CATL1 Antibody (heavy chain, Cleaved-Thr288) - Protein Information**

**Name** CTSL ([HGNC:2537](#))

**Synonyms** CTSL1

**Function**

Thiol protease important for the overall degradation of proteins in lysosomes (Probable). Plays a critical for normal cellular functions such as general protein turnover, antigen processing and bone remodeling. Involved in the solubilization of cross-linked TG/thyroglobulin and in the subsequent release of thyroid hormone thyroxine (T4) by limited proteolysis of TG/thyroglobulin in the thyroid follicle lumen (By similarity). In neuroendocrine chromaffin cells secretory vesicles, catalyzes the prohormone proenkephalin processing to the active enkephalin peptide neurotransmitter (By similarity). In thymus, regulates CD4(+) T cell positive selection by generating the major histocompatibility complex class II (MHCII) bound peptide ligands presented by cortical thymic epithelial cells. Also mediates invariant chain processing in cortical thymic epithelial cells (By

similarity). Major elastin-degrading enzyme at neutral pH. Accumulates as a mature and active enzyme in the extracellular space of antigen presenting cells (APCs) to regulate degradation of the extracellular matrix in the course of inflammation (By similarity). Secreted form generates endostatin from COL18A1 (PubMed:<a href="http://www.uniprot.org/citations/10716919" target="\_blank">10716919</a>). Critical for cardiac morphology and function. Plays an important role in hair follicle morphogenesis and cycling, as well as epidermal differentiation (By similarity). Required for maximal stimulation of steroidogenesis by TIMP1 (By similarity).

#### Cellular Location

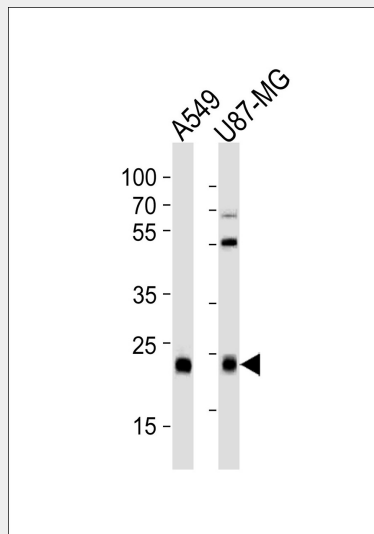
Lysosome {ECO:0000250|UniProtKB:P06797}. Apical cell membrane {ECO:0000250|UniProtKB:P06797}; Peripheral membrane protein {ECO:0000250|UniProtKB:P06797}; Extracellular side {ECO:0000250|UniProtKB:P06797}. Cytoplasmic vesicle, secretory vesicle, chromaffin granule {ECO:0000250|UniProtKB:P25975}. Secreted, extracellular space {ECO:0000250|UniProtKB:P06797}. Secreted {ECO:0000250|UniProtKB:P06797}. Note=Localizes to the apical membrane of thyroid epithelial cells. Released at extracellular space by activated dendritic cells and macrophages {ECO:0000250|UniProtKB:P06797}

#### CATL1 Antibody (heavy chain, Cleaved-Thr288) - Protocols

Provided below are standard protocols that you may find useful for product applications.

- [Western Blot](#)
- [Blocking Peptides](#)
- [Dot Blot](#)
- [Immunohistochemistry](#)
- [Immunofluorescence](#)
- [Immunoprecipitation](#)
- [Flow Cytometry](#)
- [Cell Culture](#)

#### CATL1 Antibody (heavy chain, Cleaved-Thr288) - Images



Western blot analysis of lysates from A549,U-87 MG cell line (from left to right),using CATL1 Antibody (heavy chain, Cleaved-Thr288)(AP50654). AP50654 was diluted at 1:1000 at each lane. A goat anti-rabbit IgG H&L(HRP) at 1:5000 dilution was used as the secondary antibody.Lysates at 35ug per lane.

**CATL1 Antibody (heavy chain, Cleaved-Thr288) - Background**

Important for the overall degradation of proteins in lysosomes.

**CATL1 Antibody (heavy chain, Cleaved-Thr288) - References**

Gal S.,et al.Biochem. J. 253:303-306(1988).

Joseph L.J.,et al.J. Clin. Invest. 81:1621-1629(1988).

Ebert L.,et al.Submitted (JUN-2004) to the EMBL/GenBank/DDBJ databases.

Bechtel S.,et al.BMC Genomics 8:399-399(2007).

Humphray S.J.,et al.Nature 429:369-374(2004).