

**BAG3 Antibody**  
**Purified Rabbit Polyclonal Antibody (Pab)**  
**Catalog # AP50650**

**Specification**

---

**BAG3 Antibody - Product Information**

Application	WB, IHC
Primary Accession	<a href="#">O95817</a>
Reactivity	Human, Mouse, Rat
Host	Rabbit
Clonality	Polyclonal
Calculated MW	62 KDa
Antigen Region	430-459

**BAG3 Antibody - Additional Information**

**Gene ID** 9531

**Other Names**

BAG family molecular chaperone regulator 3, BAG-3, Bcl-2-associated athanogene 3, Bcl-2-binding protein Bis, Docking protein CAIR-1, BAG3, BIS

**Dilution**

WB~~1:1000  
IHC~~1:50-1:100

**Format**

Rabbit IgG in phosphate buffered saline (without Mg<sup>2+</sup> and Ca<sup>2+</sup>), pH 7.4, 150mM NaCl, 0.09% (W/V) sodium azide and 50% glycerol.

**Storage Conditions**

-20°C

**BAG3 Antibody - Protein Information**

**Name** BAG3

**Synonyms** BIS

**Function**

Co-chaperone for HSP70 and HSC70 chaperone proteins. Acts as a nucleotide-exchange factor (NEF) promoting the release of ADP from the HSP70 and HSC70 proteins thereby triggering client/substrate protein release. Nucleotide release is mediated via its binding to the nucleotide-binding domain (NBD) of HSPA8/HSC70 where as the substrate release is mediated via its binding to the substrate-binding domain (SBD) of HSPA8/HSC70 (PubMed:<a href="http://www.uniprot.org/citations/27474739" target="\_blank">27474739</a>, PubMed:<a href="http://www.uniprot.org/citations/9873016" target="\_blank">9873016</a>). Has anti-apoptotic activity (PubMed:<a href="http://www.uniprot.org/citations/10597216" target="\_blank">10597216</a>)

target="\_blank">10597216</a>). Plays a role in the HSF1 nucleocytoplasmic transport (PubMed:<a href="http://www.uniprot.org/citations/26159920" target="\_blank">26159920</a>).

#### Cellular Location

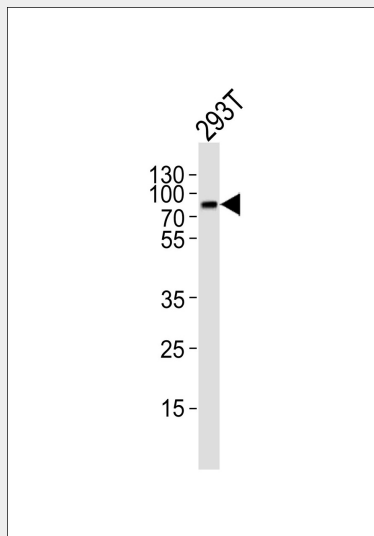
Nucleus. Cytoplasm. Note=Colocalizes with HSF1 to the nucleus upon heat stress (PubMed:26159920)

#### BAG3 Antibody - Protocols

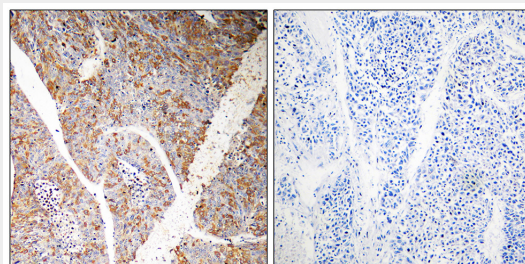
Provided below are standard protocols that you may find useful for product applications.

- [Western Blot](#)
- [Blocking Peptides](#)
- [Dot Blot](#)
- [Immunohistochemistry](#)
- [Immunofluorescence](#)
- [Immunoprecipitation](#)
- [Flow Cytometry](#)
- [Cell Culture](#)

#### BAG3 Antibody - Images



Western blot analysis of lysate from 293T cell line, using BAG3 Antibody (AP50650). AP50650 was diluted at 1:1000. A goat anti-rabbit IgG H&L (HRP) at 1:5000 dilution was used as the secondary antibody. Lysate at 35ug.



Immunohistochemistry analysis of paraffin-embedded human liver carcinoma tissue, using BAG3 antibody.

**BAG3 Antibody - Background**

Inhibits the chaperone activity of HSP70/HSC70 by promoting substrate release. Has anti-apoptotic activity.

**BAG3 Antibody - References**

Takayama S.,et al.J. Biol. Chem. 274:781-786(1999).  
Lee J.H.,et al.Oncogene 18:6183-6190(1999).  
Doong H.,et al.Oncogene 19:4385-4395(2000).  
Ota T.,et al.Nat. Genet. 36:40-45(2004).  
Bechtel S.,et al.BMC Genomics 8:399-399(2007).