

ALDOB Antibody
Purified Rabbit Polyclonal Antibody (Pab)
Catalog # AP50637

Specification

ALDOB Antibody - Product Information

Application	WB
Primary Accession	P05062
Reactivity	Human, Mouse, Rat
Host	Rabbit
Clonality	Polyclonal
Calculated MW	39 KDa
Antigen Region	130-158

ALDOB Antibody - Additional Information

Gene ID 229

Other Names

Fructose-bisphosphate aldolase B, Liver-type aldolase, ALDOB, ALDB

Dilution

WB~~1:1000

Format

Rabbit IgG in phosphate buffered saline (without Mg²⁺ and Ca²⁺), pH 7.4, 150mM NaCl, 0.09% (W/V) sodium azide and 50% glycerol.

Storage Conditions

-20°C

ALDOB Antibody - Protein Information

Name ALDOB {ECO:0000303|PubMed:15880727, ECO:0000312|HGNC:HGNC:417}

Function

Catalyzes the aldol cleavage of fructose 1,6-biphosphate to form two triosephosphates dihydroxyacetone phosphate and D- glyceraldehyde 3-phosphate in glycolysis as well as the reverse stereospecific aldol addition reaction in gluconeogenesis. In fructolysis, metabolizes fructose 1-phosphate derived from the phosphorylation of dietary fructose by fructokinase into dihydroxyacetone phosphate and D-glyceraldehyde (PubMed:10970798, PubMed:12205126, PubMed:20848650). Acts as an adapter independently of its enzymatic activity, exerts a tumor suppressor role by stabilizing the ternary complex with G6PD and TP53 to inhibit G6PD activity and keep oxidative pentose phosphate metabolism in check (PubMed:35122041).

Cellular Location

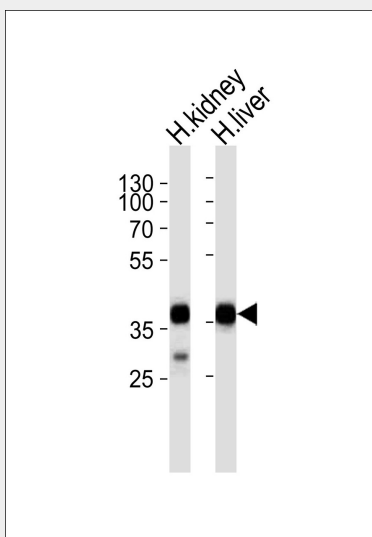
Cytoplasm, cytosol. Cytoplasm, cytoskeleton, microtubule organizing center, centrosome, centriolar satellite

ALDOB Antibody - Protocols

Provided below are standard protocols that you may find useful for product applications.

- [Western Blot](#)
- [Blocking Peptides](#)
- [Dot Blot](#)
- [Immunohistochemistry](#)
- [Immunofluorescence](#)
- [Immunoprecipitation](#)
- [Flow Cytometry](#)
- [Cell Culture](#)

ALDOB Antibody - Images



Western blot analysis of lysates from human kidney and liver tissue lysate (from left to right), using ALDOB Antibody (AP50637). AP50637 was diluted at 1:1000 at each lane. A goat anti-rabbit IgG H&L (HRP) at 1:5000 dilution was used as the secondary antibody. Lysates at 35ug per lane.

ALDOB Antibody - References

- Paolella G., et al. *Nucleic Acids Res.* 12:7401-7410(1984).
Sakakibara M., et al. *Nucleic Acids Res.* 13:5055-5069(1985).
Rottmann W.H., et al. *Proc. Natl. Acad. Sci. U.S.A.* 81:2738-2742(1984).
Mukai T., et al. *J. Biochem.* 102:1043-1051(1987).
Tolan D.R., et al. *Mol. Biol. Med.* 3:245-264(1986).