

**Keratin 8 Antibody**  
**Purified Rabbit Polyclonal Antibody (Pab)**  
**Catalog # AP50635**

**Specification**

---

**Keratin 8 Antibody - Product Information**

Application	WB, IHC
Primary Accession	<a href="#">P05787</a>
Reactivity	Human, Mouse, Rat
Host	Rabbit
Clonality	Polyclonal
Calculated MW	54 KDa
Antigen Region	451-481

**Keratin 8 Antibody - Additional Information**

**Gene ID** 3856

**Other Names**

Keratin, type II cytoskeletal 8, Cytokeratin-8, CK-8, Keratin-8, K8, Type-II keratin Kb8, KRT8, CYK8

**Dilution**

WB~~1:1000  
IHC~~1:50-1:100

**Format**

Rabbit IgG in phosphate buffered saline (without Mg<sup>2+</sup> and Ca<sup>2+</sup>), pH 7.4, 150mM NaCl, 0.09% (W/V) sodium azide and 50% glycerol.

**Storage Conditions**

-20°C

**Keratin 8 Antibody - Protein Information**

**Name** KRT8

**Synonyms** CYK8

**Function**

Together with KRT19, helps to link the contractile apparatus to dystrophin at the costameres of striated muscle.

**Cellular Location**

Cytoplasm. Nucleus, nucleoplasm {ECO:0000250|UniProtKB:Q10758}. Nucleus matrix {ECO:0000250|UniProtKB:Q10758}

**Tissue Location**

Observed in muscle fibers accumulating in the costameres of myoplasm at the sarcolemma

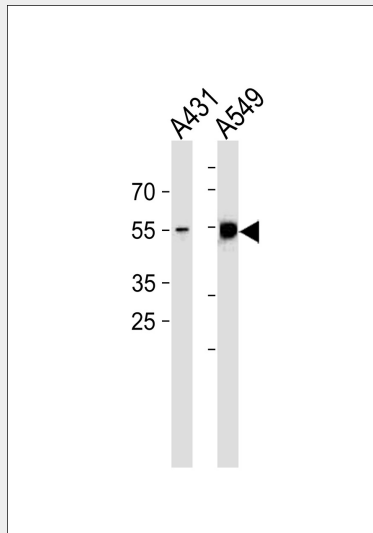
membrane in structures that contain dystrophin and spectrin. Expressed in gingival mucosa and hard palate of the oral cavity.

### Keratin 8 Antibody - Protocols

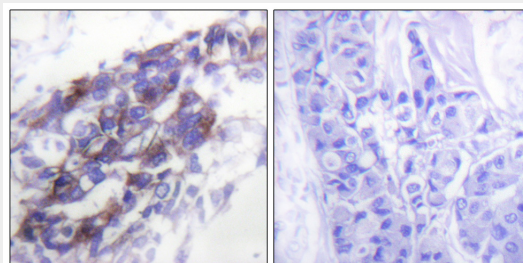
Provided below are standard protocols that you may find useful for product applications.

- [Western Blot](#)
- [Blocking Peptides](#)
- [Dot Blot](#)
- [Immunohistochemistry](#)
- [Immunofluorescence](#)
- [Immunoprecipitation](#)
- [Flow Cytometry](#)
- [Cell Culture](#)

### Keratin 8 Antibody - Images



Western blot analysis of lysates from A431, A549 cell line (from left to right), using Keratin 8 Antibody (AP50635). AP50635 was diluted at 1:1000 at each lane. A goat anti-rabbit IgG H&L (HRP) at 1:5000 dilution was used as the secondary antibody. Lysates at 35 µg per lane.



Immunohistochemical analysis of paraffin-embedded human breast carcinoma tissue using Keratin 8 antibody.

### Keratin 8 Antibody - Background

Together with KRT19, helps to link the contractile apparatus to dystrophin at the costameres of

striated muscle.

### **Keratin 8 Antibody - References**

- Krauss S.,et al.Gene 86:241-249(1990).  
Yamamoto R.,et al.Mol. Endocrinol. 4:370-374(1990).  
Waseem A.,et al.New Biol. 2:464-478(1990).  
Ku N.-O.,et al.J. Biol. Chem. 272:7556-7564(1997).  
Ota T.,et al.Nat. Genet. 36:40-45(2004).