

NT5C1A Antibody
Affinity Purified Rabbit Polyclonal Antibody (Pab)
Catalog # AP50612**Specification**

NT5C1A Antibody - Product Information

Application	IF, WB
Primary Accession	O9BXI3
Reactivity	Human, Mouse
Host	Rabbit
Clonality	Polyclonal
Calculated MW	41 KDa
Antigen Region	165-192

NT5C1A Antibody - Additional Information**Gene ID** 84618**Other Names**

Cytosolic 5'-nucleotidase 1A, cN1A, Cytosolic 5'-nucleotidase IA, cN-I, cN-IA, NT5C1A

Dilution

IF~~1:100

WB~~ 1:1000

FormatRabbit IgG in phosphate buffered saline (without Mg²⁺ and Ca²⁺), pH 7.4, 150mM NaCl, 0.09% (W/V) sodium azide and 50% glycerol.**Storage Conditions**

-20°C

NT5C1A Antibody - Protein Information**Name** NT5C1A**Function**

Catalyzes the hydrolysis of ribonucleotide and deoxyribonucleotide monophosphates, releasing inorganic phosphate and the corresponding nucleoside (PubMed:[11133996](http://www.uniprot.org/citations/11133996), PubMed:[34814800](http://www.uniprot.org/citations/34814800), PubMed:[7599155](http://www.uniprot.org/citations/7599155), PubMed:[8967393](http://www.uniprot.org/citations/8967393)). AMP is the major substrate but can also hydrolyze dCMP and IMP (PubMed:[11133996](http://www.uniprot.org/citations/11133996), PubMed:[34814800](http://www.uniprot.org/citations/34814800), PubMed:[7599155](http://www.uniprot.org/citations/7599155), PubMed:[8967393](http://www.uniprot.org/citations/8967393)).

Cellular Location

Cytoplasm.

Tissue Location

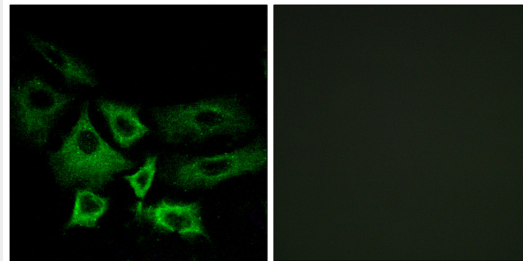
Highly expressed in skeletal muscle. Detected at intermediate levels in heart, brain, kidney and pancreas

NT5C1A Antibody - Protocols

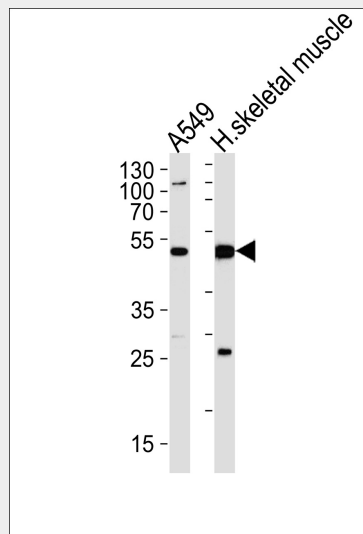
Provided below are standard protocols that you may find useful for product applications.

- [Western Blot](#)
- [Blocking Peptides](#)
- [Dot Blot](#)
- [Immunohistochemistry](#)
- [Immunofluorescence](#)
- [Immunoprecipitation](#)
- [Flow Cytometry](#)
- [Cell Culture](#)

NT5C1A Antibody - Images



Immunofluorescence analysis of A549 cells, using NT5C1A antibody.



Western blot analysis of lysates from A549 cell line and human skeletal muscle tissue lysate (from left to right), using NT5C1A Antibody (AP50612). AP50612 was diluted at 1:1000 at each lane. A goat anti-rabbit IgG H&L (HRP) at 1:5000 dilution was used as the secondary antibody. Lysates at 35 µg per lane.

NT5C1A Antibody - Background

Dephosphorylates the 5' and 2'(3')-phosphates of deoxyribonucleotides and has a broad substrate specificity. Helps to regulate adenosine levels in heart during ischemia and hypoxia.

NT5C1A Antibody - References

Hunsucker S.A.,et al.J. Biol. Chem. 276:10498-10504(2001).
Lowenstein J.M.,et al.Submitted (MAR-2001) to the EMBL/GenBank/DDBJ databases.
Gregory S.G.,et al.Nature 441:315-321(2006).