

**NFE2L3 Antibody**  
**Purified Rabbit Polyclonal Antibody (Pab)**  
**Catalog # AP50594**

**Specification**

---

**NFE2L3 Antibody - Product Information**

|                   |                        |
|-------------------|------------------------|
| Application       | <b>WB</b>              |
| Primary Accession | <a href="#">O9Y4A8</a> |
| Reactivity        | <b>Human</b>           |
| Host              | <b>Rabbit</b>          |
| Clonality         | <b>Polyclonal</b>      |
| Calculated MW     | <b>76 KDa</b>          |
| Antigen Region    | <b>505-534</b>         |

**NFE2L3 Antibody - Additional Information**

**Gene ID** 9603

**Other Names**

Nuclear factor erythroid 2-related factor 3, NF-E2-related factor 3, NFE2-related factor 3, Nuclear factor, erythroid derived 2, like 3, NFE2L3, NRF3

**Dilution**

WB~~ 1:1000

**Format**

Rabbit IgG in phosphate buffered saline (without Mg<sup>2+</sup> and Ca<sup>2+</sup>), pH 7.4, 150mM NaCl, 0.09% (W/V) sodium azide and 50% glycerol.

**Storage Conditions**

-20°C

**NFE2L3 Antibody - Protein Information**

**Name** NFE2L3

**Synonyms** NRF3

**Function**

Activates erythroid-specific, globin gene expression.

**Cellular Location**

Nucleus {ECO:0000255|PROSITE-ProRule:PRU00978}.

**Tissue Location**

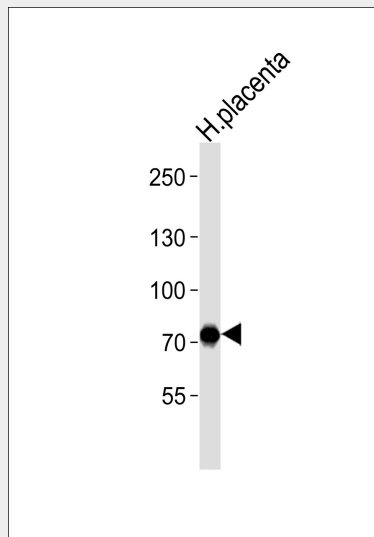
Highly expressed in human placenta and also in B- cell and monocyte cell lines. Low expression in heart, brain, lung, skeletal muscle, kidney and pancreas.

## NFE2L3 Antibody - Protocols

Provided below are standard protocols that you may find useful for product applications.

- [Western Blot](#)
- [Blocking Peptides](#)
- [Dot Blot](#)
- [Immunohistochemistry](#)
- [Immunofluorescence](#)
- [Immunoprecipitation](#)
- [Flow Cytometry](#)
- [Cell Culture](#)

## NFE2L3 Antibody - Images



Western blot analysis of lysate from human placenta tissue lysate, using NFE2L3 Antibody (AP50594). AP50594 was diluted at 1:1000. A goat anti-rabbit IgG H&L (HRP) at 1:5000 dilution was used as the secondary antibody. Lysate at 35ug.

## NFE2L3 Antibody - Background

Activates erythroid-specific, globin gene expression.

## NFE2L3 Antibody - References

Blank V., et al. Submitted (MAR-1999) to the EMBL/GenBank/DDBJ databases.  
Stoesz S.P., et al. Submitted (MAR-1999) to the EMBL/GenBank/DDBJ databases.  
Hillier L.W., et al. Nature 424:157-164(2003).  
Kobayashi A., et al. J. Biol. Chem. 274:6443-6452(1999).

## NFE2L3 Antibody - Citations

- [NFE2L3 drives hepatocellular carcinoma cell proliferation by regulating the proteasome-dependent degradation of ISGylated p53](#)