

RAB7L1 Antibody
Purified Rabbit Polyclonal Antibody (Pab)
Catalog # AP50582**Specification**

RAB7L1 Antibody - Product Information

| | |
|-------------------|------------------------|
| Application | WB |
| Primary Accession | O14966 |
| Reactivity | Human, Mouse, Rat |
| Host | Rabbit |
| Clonality | Polyclonal |
| Calculated MW | 23 20 15 KDa |
| Antigen Region | 123-150 |

RAB7L1 Antibody - Additional Information**Gene ID** 8934**Other Names**

Ras-related protein Rab-7L1, Rab-7-like protein 1, Ras-related protein Rab-29, RAB29, RAB7L1

Dilution

WB~~ 1:1000

FormatRabbit IgG in phosphate buffered saline (without Mg²⁺ and Ca²⁺), pH 7.4, 150mM NaCl, 0.09% (W/V) sodium azide and 50% glycerol.**Storage Conditions**

-20°C

RAB7L1 Antibody - Protein Information**Name** RAB29**Synonyms** RAB7L1**Function**

The small GTPases Rab are key regulators in vesicle trafficking (PubMed: [24788816](http://www.uniprot.org/citations/24788816)). Essential for maintaining the integrity of the endosome-trans-Golgi network structure (By similarity). Together with LRRK2, plays a role in the retrograde trafficking pathway for recycling proteins, such as mannose 6 phosphate receptor (M6PR), between lysosomes and the Golgi apparatus in a retromer-dependent manner (PubMed: [24788816](http://www.uniprot.org/citations/24788816)). Recruits LRRK2 to the Golgi complex and stimulates LRRK2 kinase activity (PubMed: [29212815](http://www.uniprot.org/citations/29212815), PubMed: [38127736](http://www.uniprot.org/citations/38127736)). Stimulates phosphorylation of RAB10 'Thr-73' by LRRK2

(PubMed:38127736). Regulates neuronal process morphology in the intact central nervous system (CNS) (By similarity). May play a role in the formation of typhoid toxin transport intermediates during Salmonella enterica serovar Typhi (S.Typhi) epithelial cell infection (PubMed:22042847).

Cellular Location

Cell membrane; Lipid-anchor; Cytoplasmic side. Cytoplasm. Cytoplasm, perinuclear region. Golgi apparatus. Golgi apparatus membrane. Golgi apparatus, trans-Golgi network. Vacuole. Cytoplasm, cytoskeleton. Note=Colocalizes with LRRK2 along tubular structures emerging from Golgi apparatus (PubMed:29212815) Colocalizes with GM130 at the Golgi apparatus (PubMed:22042847) Colocalizes with dynamic tubules emerging from and retracting to the Golgi apparatus (PubMed:22042847, PubMed:38127736). Colocalizes with TGN46 at the trans-Golgi network (TGN) (PubMed:24788816). In Salmonella enterica serovar Typhi (S.Typhi) infected epithelial cells, is recruited and colocalized with both S.Typhi-containing vacuoles and dynamic tubules as well as those emerging from the vacuole toward the cell periphery (PubMed:22042847).

Tissue Location

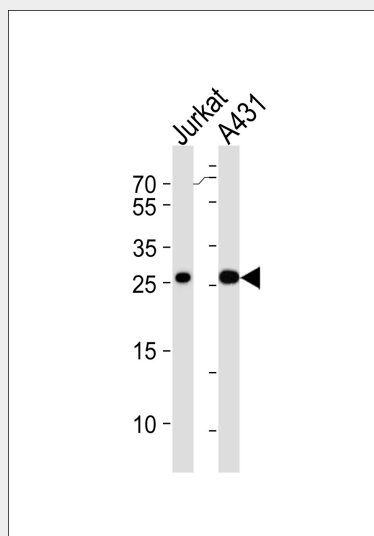
Ubiquitous..

RAB7L1 Antibody - Protocols

Provided below are standard protocols that you may find useful for product applications.

- [Western Blot](#)
- [Blocking Peptides](#)
- [Dot Blot](#)
- [Immunohistochemistry](#)
- [Immunofluorescence](#)
- [Immunoprecipitation](#)
- [Flow Cytometry](#)
- [Cell Culture](#)

RAB7L1 Antibody - Images



Western blot analysis of lysates from Jurkat,A431 cell line (from left to right),using RAB7L1 Antibody(AP50582). AP50582 was diluted at 1:1000 at each lane. A goat anti-rabbit IgG H&L(HRP)

at 1:5000 dilution was used as the secondary antibody. Lysates at 35ug per lane.

RAB7L1 Antibody - References

Shimizu F., et al. Cytogenet. Cell Genet. 77:261-263(1997).

Ota T., et al. Nat. Genet. 36:40-45(2004).

Gregory S.G., et al. Nature 441:315-321(2006).

Dephoure N., et al. Proc. Natl. Acad. Sci. U.S.A. 105:10762-10767(2008).

Olsen J.V., et al. Sci. Signal. 3:RA3-RA3(2010).