

ISM1 Antibody (C-term)
Affinity Purified Rabbit Polyclonal Antibody (Pab)
Catalog # AP5046b

Specification

ISM1 Antibody (C-term) - Product Information

Application	WB, IHC-P,E
Primary Accession	B1AKI9
Other Accession	A2ATD1
Reactivity	Human
Predicted	Mouse
Host	Rabbit
Clonality	Polyclonal
Isotype	Rabbit IgG
Antigen Region	435-464

ISM1 Antibody (C-term) - Additional Information

Gene ID 140862

Other Names

Isthmin-1, ISM1, C20orf82, ISM

Target/Specificity

This ISM1 antibody is generated from rabbits immunized with a KLH conjugated synthetic peptide between 435-464 amino acids of human ISM1.

Dilution

WB~~1:2000
IHC-P~~1:50~100

Format

Purified polyclonal antibody supplied in PBS with 0.09% (W/V) sodium azide. This antibody is purified through a protein A column, followed by peptide affinity purification.

Storage

Maintain refrigerated at 2-8°C for up to 2 weeks. For long term storage store at -20°C in small aliquots to prevent freeze-thaw cycles.

Precautions

ISM1 Antibody (C-term) is for research use only and not for use in diagnostic or therapeutic procedures.

ISM1 Antibody (C-term) - Protein Information

Name ISM1

Synonyms C20orf82, ISM

Function Acts as an angiogenesis inhibitor.

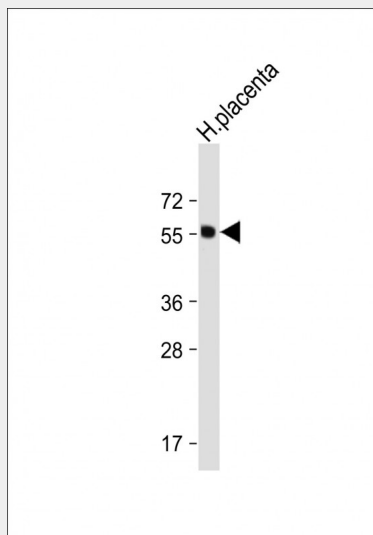
Cellular Location
Secreted.

ISM1 Antibody (C-term) - Protocols

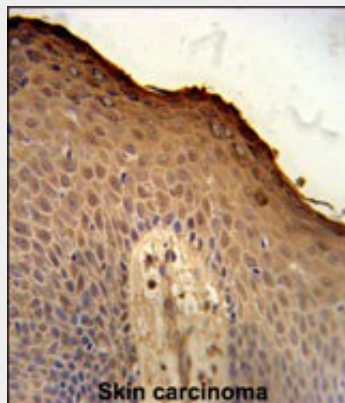
Provided below are standard protocols that you may find useful for product applications.

- [Western Blot](#)
- [Blocking Peptides](#)
- [Dot Blot](#)
- [Immunohistochemistry](#)
- [Immunofluorescence](#)
- [Immunoprecipitation](#)
- [Flow Cytometry](#)
- [Cell Culture](#)

ISM1 Antibody (C-term) - Images



Anti-ISM1 Antibody (C-term) at 1:2000 dilution + Human placenta tissue lysate Lysates/proteins at 20 µg per lane. Secondary Goat Anti-Rabbit IgG, (H+L), Peroxidase conjugated at 1/10000 dilution. Predicted band size : 52 kDa Blocking/Dilution buffer: 5% NFDM/TBST.



ISM1 Antibody (C-term) (Cat. #AP5046b) immunohistochemistry analysis in formalin fixed and paraffin embedded human skin carcinoma followed by peroxidase conjugation of the secondary antibody and DAB staining. This data demonstrates the use of the ISM1 Antibody (C-term) for immunohistochemistry. Clinical relevance has not been evaluated.

ISM1 Antibody (C-term) - References

Simon-Sanchez, J., et al. Nat. Genet. 41(12):1308-1312(2009)
Pera, E.M., et al. Mech. Dev. 116 (1-2), 169-172 (2002)
Deloukas, P., et al. Nature 414(6866):865-871(2001)

ISM1 Antibody (C-term) - Citations

- [Zebrafish *lsm1* is a novel antiviral factor that positively regulates antiviral immune responses](#)