

**GPR52 Antibody**  
**Purified Rabbit Polyclonal Antibody (Pab)**  
**Catalog # AP50214**

**Specification**

---

**GPR52 Antibody - Product Information**

Application	<b>WB</b>
Primary Accession	<a href="#">O9Y2T5</a>
Reactivity	<b>Human</b>
Host	<b>Rabbit</b>
Clonality	<b>Polyclonal</b>
Calculated MW	<b>41 KDa</b>
Antigen Region	<b>335-361</b>

**GPR52 Antibody - Additional Information**

**Gene ID** 9293

**Other Names**

Probable G-protein coupled receptor 52, GPR52

**Dilution**

WB~~ 1:1000

**Format**

Rabbit IgG in phosphate buffered saline (without Mg<sup>2+</sup> and Ca<sup>2+</sup>), pH 7.4, 150mM NaCl, 0.09% (W/V) sodium azide and 50% glycerol.

**Storage Conditions**

-20°C

**GPR52 Antibody - Protein Information**

**Name** GPR52 {ECO:0000303|PubMed:9931487, ECO:0000312|HGNC:HGNC:4508}

**Function**

Gs-coupled receptor activated by antipsychotics reserpine leading to an increase in intracellular cAMP and its internalization (PubMed:[24587241](http://www.uniprot.org/citations/24587241)). May play a role in locomotor activity through modulation of dopamine, NMDA and ADORA2A-induced locomotor activity. These behavioral changes are accompanied by modulation of the dopamine receptor signaling pathway in striatum (PubMed:[24587241](http://www.uniprot.org/citations/24587241)). Modulates HTT level via cAMP-dependent but PKA independent mechanisms through activation of RAB39B that translocates HTT to the endoplasmic reticulum, thus avoiding proteasome degradation (PubMed:[25738228](http://www.uniprot.org/citations/25738228)).

**Cellular Location**

Cell membrane; Multi-pass membrane protein.

### Tissue Location

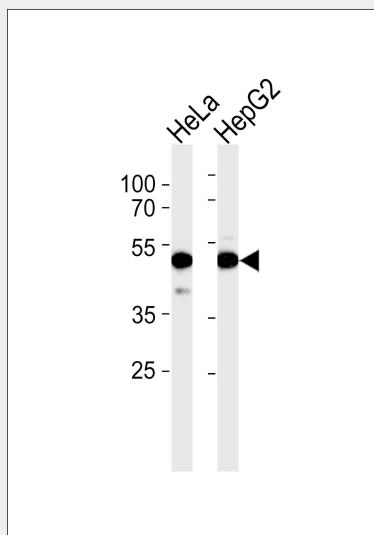
Expressed in brain, especially in striatum.

### GPR52 Antibody - Protocols

Provided below are standard protocols that you may find useful for product applications.

- [Western Blot](#)
- [Blocking Peptides](#)
- [Dot Blot](#)
- [Immunohistochemistry](#)
- [Immunofluorescence](#)
- [Immunoprecipitation](#)
- [Flow Cytometry](#)
- [Cell Culture](#)

### GPR52 Antibody - Images



Western blot analysis of lysates from HeLa, HepG2 cell line (from left to right), using GPR52 Antibody(G344). G344 was diluted at 1:1000 at each lane. A goat anti-rabbit IgG H&L(HRP) at 1:5000 dilution was used as the secondary antibody. Lysates at 35ug per lane.

### GPR52 Antibody - Background

Orphan receptor.

### GPR52 Antibody - References

Sawzdargo M., et al. Brain Res. Mol. Brain Res. 64:193-198(1999).  
Gregory S.G., et al. Nature 441:315-321(2006).