

TBX3 Antibody
Affinity-Purified Rabbit Polyclonal Antibody (Pab)
Catalog # AP50213**Specification**

TBX3 Antibody - Product Information

Application	WB
Primary Accession	O15119
Reactivity	Human, Mouse, Rat
Host	Rabbit
Clonality	Polyclonal
Calculated MW	79,77,66 KDa
Antigen Region	312-341

TBX3 Antibody - Additional Information**Gene ID** 6926**Other Names**

T-box transcription factor TBX3, T-box protein 3, TBX3

Dilution

WB~~ 1:1000

FormatRabbit IgG in phosphate buffered saline (without Mg²⁺ and Ca²⁺), pH 7.4, 150mM NaCl, 0.09% (W/V) sodium azide and 50% glycerol.**Storage Conditions**

-20°C

TBX3 Antibody - Protein Information**Name** TBX3**Function**

Transcriptional repressor involved in developmental processes (PubMed:[10468588](http://www.uniprot.org/citations/10468588)). Binds to the palindromic T site 5'- TTCACACCTAGGTGTGAA-3' DNA sequence, or a half-site, which are present in the regulatory region of several genes (PubMed:[12000749](http://www.uniprot.org/citations/12000749)). Probably plays a role in limb pattern formation (PubMed:[10468588](http://www.uniprot.org/citations/10468588)). Required for mammary placode induction, and maintenance of the mammary buds during development (By similarity). Involved in branching morphogenesis in both developing lungs and adult mammary glands, via negative modulation of target genes; acting redundantly with TBX2 (By similarity). Required, together with TBX2, to maintain cell proliferation in the embryonic lung mesenchyme; perhaps acting downstream of SHH, BMP and TGFbeta signaling (By similarity). Involved in

modulating early inner ear development, acting independently of, and also redundantly with, TBX2 in different subregions of the developing ear (By similarity). Acts as a negative regulator of PML function in cellular senescence (PubMed:22002537).

Cellular Location

Nucleus {ECO:0000255|PROSITE-ProRule:PRU00201}.

Tissue Location

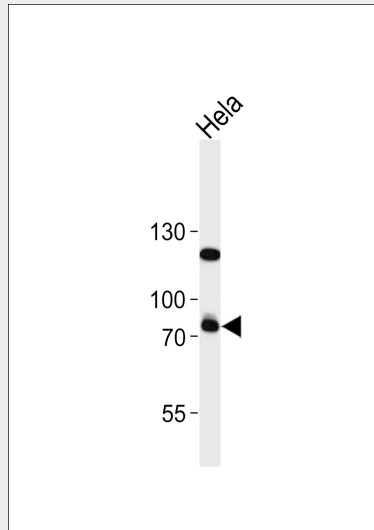
Widely expressed.

TBX3 Antibody - Protocols

Provided below are standard protocols that you may find useful for product applications.

- [Western Blot](#)
- [Blocking Peptides](#)
- [Dot Blot](#)
- [Immunohistochemistry](#)
- [Immunofluorescence](#)
- [Immunoprecipitation](#)
- [Flow Cytometry](#)
- [Cell Culture](#)

TBX3 Antibody - Images



Western blot analysis of lysate from HeLa cell line, using TBX3 Antibody (C21105). C21105 was diluted at 1:1000. A goat anti-rabbit IgG H&L (HRP) at 1:5000 dilution was used as the secondary antibody. Lysate at 35ug.

TBX3 Antibody - Background

Transcriptional repressor involved in developmental processes. Probably plays a role in limb pattern formation. Acts as a negative regulator of PML function in cellular senescence.

TBX3 Antibody - References

He M.-L.,et al.Proc. Natl. Acad. Sci. U.S.A. 96:10212-10217(1999).
Bamshad M.,et al.Nat. Genet. 16:311-315(1997).
Bamshad M.,et al.Am. J. Hum. Genet. 64:1550-1562(1999).
Song H.,et al.Submitted (DEC-1999) to the EMBL/GenBank/DDBJ databases.
Cantin G.T.,et al.J. Proteome Res. 7:1346-1351(2008).