

Catenin-γ Antibody
Purified Rabbit Polyclonal Antibody (Pab)
Catalog # AP50192**Specification**

Catenin-γ Antibody - Product Information

Application	WB, IHC
Primary Accession	P14923
Reactivity	Human, Mouse, Rat
Host	Rabbit
Clonality	Polyclonal
Calculated MW	82 KDa
Antigen Region	717-745

Catenin-γ Antibody - Additional Information**Gene ID** 3728**Other Names**

Junction plakoglobin, Catenin gamma, Desmoplakin III, Desmoplakin-3, JUP, CTNNG, DP3

Dilution

WB~~ 1:1000

IHC~~1:50-1:100

FormatRabbit IgG in phosphate buffered saline (without Mg²⁺ and Ca²⁺), pH 7.4, 150mM NaCl, 0.09% (W/V) sodium azide and 50% glycerol.**Storage Conditions**

-20°C

Catenin-γ Antibody - Protein Information**Name** JUP ([HGNC:6207](#))**Function**

Common junctional plaque protein. The membrane-associated plaques are architectural elements in an important strategic position to influence the arrangement and function of both the cytoskeleton and the cells within the tissue. The presence of plakoglobin in both the desmosomes and in the intermediate junctions suggests that it plays a central role in the structure and function of submembranous plaques. Acts as a substrate for VE-PTP and is required by it to stimulate VE-cadherin function in endothelial cells. Can replace beta-catenin in E-cadherin/catenin adhesion complexes which are proposed to couple cadherins to the actin cytoskeleton (By similarity).

Cellular Location

Cell junction, adherens junction. Cell junction, desmosome. Cytoplasm, cytoskeleton. Cell membrane; Peripheral membrane protein. Cytoplasm {ECO:0000250|UniProtKB:Q9PVF7}. Cell

junction {ECO:0000250|UniProtKB:Q9PVF7}. Nucleus {ECO:0000250|UniProtKB:Q9PVF7}
Note=Cytoplasmic in a soluble and membrane-associated form. Colocalizes with DSG4 at desmosomes (PubMed:21495994)

Tissue Location

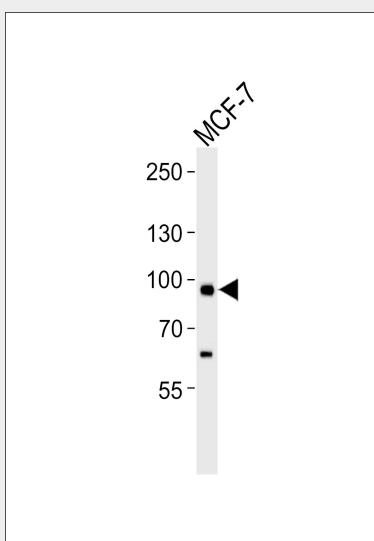
Expressed in the heart (at protein level).

Catenin- γ Antibody - Protocols

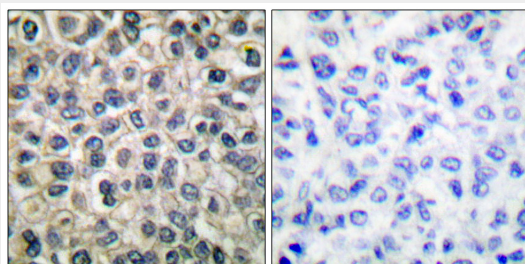
Provided below are standard protocols that you may find useful for product applications.

- [Western Blot](#)
- [Blocking Peptides](#)
- [Dot Blot](#)
- [Immunohistochemistry](#)
- [Immunofluorescence](#)
- [Immunoprecipitation](#)
- [Flow Cytometry](#)
- [Cell Culture](#)

Catenin- γ Antibody - Images



Western blot analysis of lysate from MCF-7 cell line, using Catenin- γ Antibody (C0138). C0138 was diluted at 1:1000. A goat anti-rabbit IgG H&L (HRP) at 1:5000 dilution was used as the secondary antibody. Lysate at 35 μ g.



Immunohistochemical analysis of paraffin-embedded human breast carcinoma tissue using Catenin- γ antibody.

Catenin- γ Antibody - Background

Common junctional plaque protein. The membrane-associated plaques are architectural elements in an important strategic position to influence the arrangement and function of both the cytoskeleton and the cells within the tissue. The presence of plakoglobin in both the desmosomes and in the intermediate junctions suggests that it plays a central role in the structure and function of submembranous plaques. Acts as a substrate for VE-PTP and is required by it to stimulate VE-cadherin function in endothelial cells. Can replace beta-catenin in E-cadherin/catenin adhesion complexes which are proposed to couple cadherins to the actin cytoskeleton (By similarity).

Catenin- γ Antibody - References

Franke W.W., et al. Proc. Natl. Acad. Sci. U.S.A. 86:4027-4031(1989).
Zimbelmann R., et al. Submitted (DEC-1995) to the EMBL/GenBank/DDBJ databases.
Whitlock N.V., et al. Exp. Dermatol. 9:323-326(2000).
Liang X.-J., et al. Submitted (FEB-2003) to the EMBL/GenBank/DDBJ databases.
Zody M.C., et al. Nature 440:1045-1049(2006).