

CD24 Antibody
Protein A Purified Rabbit Polyclonal Antibody (Pab)
Catalog # AP50187**Specification**

CD24 Antibody - Product Information

Application	WB, IHC, IHC-P
Primary Accession	Q07490
Reactivity	Human, Mouse, Rat
Host	Rabbit
Clonality	Polyclonal
Calculated MW	H=8; M=8;R=8;35-45(actual) KDa
Antigen Region	27-53aa/76aa

CD24 Antibody - Additional Information**Gene ID** 25145**Other Names**

Signal transducer CD24, Heat-stable antigen, HSA, Nectadrin, CD24, Cd24, Cd24a

Dilution

WB~~ 1:1000<br \>IHC~~1:200<br \>IHC-P~~1:100~1:500

Format

0.01M TBS(pH7.4), 0.09% (W/V) sodium azide and 50% Glyce

Storage

Store at -20 °C for one year. Avoid repeated freeze/thaw cycles. When reconstituted in sterile pH 7.4 0.01M PBS or diluent of antibody the antibody is stable for at least two weeks at 2-4 °C.

CD24 Antibody - Protein Information**Name** Cd24**Synonyms** Cd24a**Function**

May have a pivotal role in cell differentiation of different cell types. Signaling could be triggered by the binding of a lectin- like ligand to the CD24 carbohydrates, and transduced by the release of second messengers derived from the GPI-anchor. Modulates B-cell activation responses. In association with SIGLEC10 may be involved in the selective suppression of the immune response to danger-associated molecular patterns (DAMPs) such as HMGB1, HSP70 and HSP90. Plays a role in the control of autoimmunity (By similarity).

Cellular Location

Cell membrane; Lipid-anchor, GPI-anchor.

Tissue Location

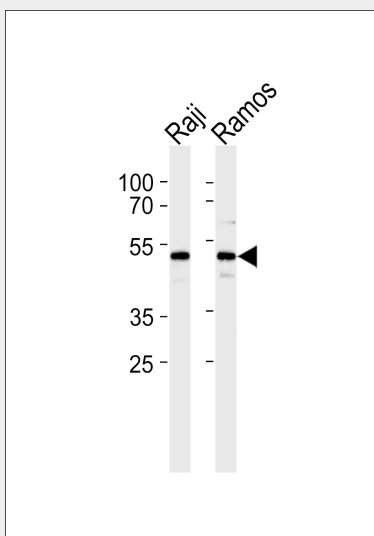
Expressed in the central nervous system, in postmitotic cells of spinal cord, hindbrain, midbrain and forebrain Expressed in epithelium during the development of non-neural tissues Expressed in tooth development, specifically in mesenchymal cells differentiating into odontoblast in dental papilla, as well as in the developing eye and hair follicle

CD24 Antibody - Protocols

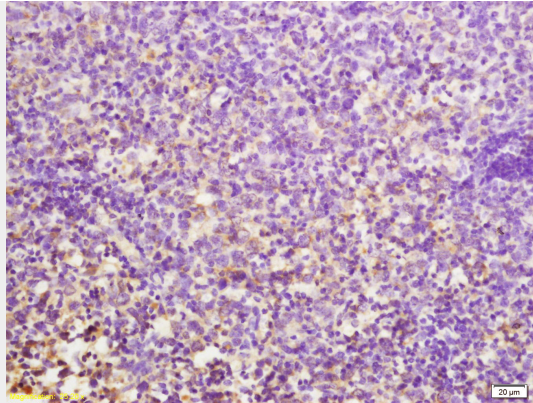
Provided below are standard protocols that you may find useful for product applications.

- [Western Blot](#)
- [Blocking Peptides](#)
- [Dot Blot](#)
- [Immunohistochemistry](#)
- [Immunofluorescence](#)
- [Immunoprecipitation](#)
- [Flow Cytometry](#)
- [Cell Culture](#)

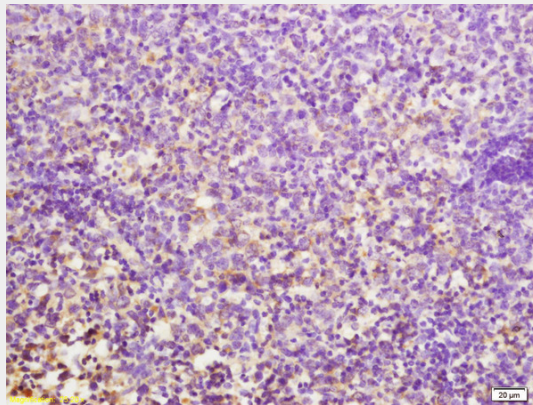
CD24 Antibody - Images



Western blot analysis of lysates from Raji,Ramos cell line (from left to right),using CD24 Antibody(AP50187). AP50187 was diluted at 1:1000 at each lane. A goat anti-rabbit IgG H&L(HRP) at 1:5000 dilution was used as the secondary antibody.Lysates at 35ug per lane.



Tissue/cell: mouse lymphoma tissue; 4% Paraformaldehyde-fixed and paraffin-embedded; Antigen retrieval: citrate buffer (0.01M, pH 6.0), Boiling bathing for 15min; Block endogenous peroxidase by 3% Hydrogen peroxide for 30min; Blocking buffer at 37°C for 20 min; Incubation: Anti-CD24 Polyclonal Antibody, Unconjugated(AP50187) 1:200, overnight at 4°C, followed by conjugation to the secondary antibody and DAB staining



Formalin-fixed and paraffin embedded mouse lymphoma tissue labeled with Anti-CD24 Polyclonal Antibody, Unconjugated (AP50187) at 1:200 followed by conjugation to the secondary antibody

CD24 Antibody - Background

Modulates B-cell activation responses. Signaling could be triggered by the binding of a lectin-like ligand to the CD24 carbohydrates, and transduced by the release of second messengers derived from the GPI-anchor. Promotes AG-dependent proliferation of B-cells, and prevents their terminal differentiation into antibody-forming cells.

CD24 Antibody - References

Kay R.,et al.J. Immunol. 147:1412-1416(1991).
Jackson D.,et al.Cancer Res. 52:5264-5270(1992).
Kalnina N.,et al.Submitted (MAY-2003) to the EMBL/GenBank/DDBJ databases.
Hough M.R.,et al.Genomics 22:154-161(1994).
Zarn J.A.,et al.Biochem. Biophys. Res. Commun. 225:384-391(1996).