

Claudin 3 Antibody
Purified Rabbit Polyclonal Antibody (Pab)
Catalog # AP50074**Specification**

Claudin 3 Antibody - Product Information

Application	IF, WB, IHC
Primary Accession	O15551
Reactivity	Human, Mouse, Rat
Host	Rabbit
Clonality	Polyclonal
Calculated MW	23 KDa
Antigen Region	190-220

Claudin 3 Antibody - Additional Information**Gene ID** 1365**Other Names**

Claudin-3, Clostridium perfringens enterotoxin receptor 2, CPE-R 2, CPE-receptor 2, Rat ventral prostate1 protein homolog, hRVP1, CLDN3, C7orf1, CPETR2

DilutionIF~~1:100
WB~~ 1:1000
IHC~~1:50-1:100**Format**Rabbit IgG in phosphate buffered saline (without Mg²⁺ and Ca²⁺), pH 7.4, 150mM NaCl, 0.09% (W/V) sodium azide and 50% glycerol.**Storage Conditions**

-20°C

Claudin 3 Antibody - Protein Information**Name** CLDN3**Synonyms** C7orf1, CPETR2**Function**

Barrier-forming claudin. Plays a major role in tight junction-specific obliteration of the intercellular space, through calcium-independent cell-adhesion activity.

Cellular Location

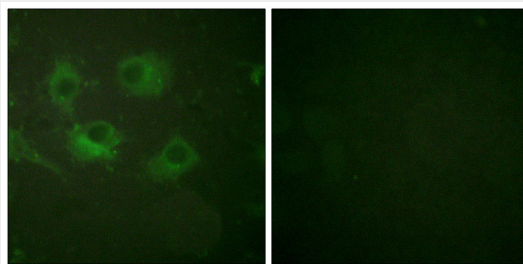
Cell junction, tight junction. Cell membrane; Multi-pass membrane protein

Claudin 3 Antibody - Protocols

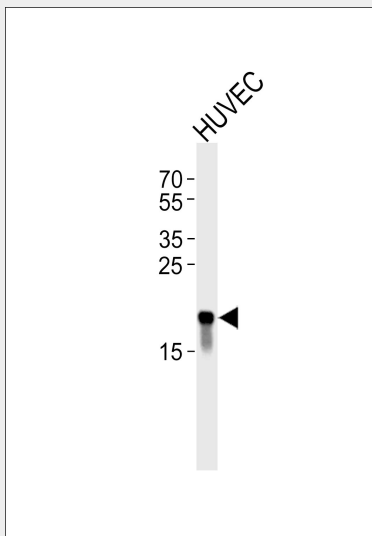
Provided below are standard protocols that you may find useful for product applications.

- [Western Blot](#)
- [Blocking Peptides](#)
- [Dot Blot](#)
- [Immunohistochemistry](#)
- [Immunofluorescence](#)
- [Immunoprecipitation](#)
- [Flow Cytometry](#)
- [Cell Culture](#)

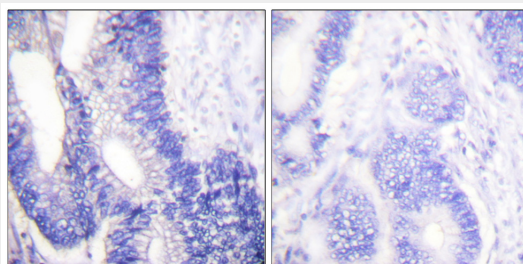
Claudin 3 Antibody - Images



Immunofluorescence analysis of HuvEc cells, using Claudin 3 antibody .



Western blot analysis of lysate from HUVEC cell line, using Claudin 3 Antibody(C0144). C0144 was diluted at 1:1000. A goat anti-rabbit IgG H&L(HRP) at 1:5000 dilution was used as the secondary antibody. Lysate at 35ug.



Immunohistochemical analysis of paraffin-embedded human colon carcinoma tissue using Claudin 3 antibody.

Claudin 3 Antibody - Background

Plays a major role in tight junction-specific obliteration of the intercellular space, through calcium-independent cell-adhesion activity (By similarity).

Claudin 3 Antibody - References

Peacock R.E., et al. Genomics 46:443-449(1997).
Katahira J., et al. J. Biol. Chem. 272:26652-26658(1997).