

BRP44L Antibody
Purified Rabbit Polyclonal Antibody (Pab)
Catalog # AP50065**Specification**

BRP44L Antibody - Product Information

Application	IF, WB, IHC
Primary Accession	O9Y5U8
Reactivity	Human, Mouse, Rat
Host	Rabbit
Clonality	Polyclonal
Calculated MW	12 KDa
Antigen Region	35-61

BRP44L Antibody - Additional Information**Gene ID** 51660**Other Names**

Mitochondrial pyruvate carrier 1, Brain protein 44-like protein, MPC1, BRP44L

Dilution

IF~~1:100

WB~~ 1:1000

IHC~~1:50-1:100

FormatRabbit IgG in phosphate buffered saline (without Mg²⁺ and Ca²⁺), pH 7.4, 150mM NaCl, 0.09% (W/V) sodium azide and 50% glycerol.**Storage Conditions**

-20°C

BRP44L Antibody - Protein Information**Name** MPC1**Synonyms** BRP44L**Function**

Mediates the uptake of pyruvate into mitochondria.

Cellular Location

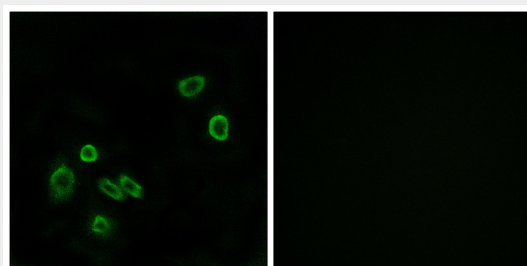
Mitochondrion inner membrane; Multi-pass membrane protein

BRP44L Antibody - Protocols

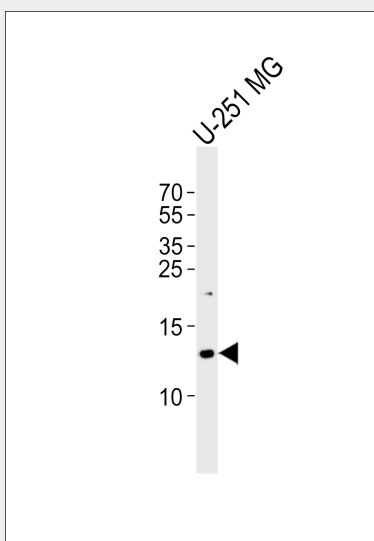
Provided below are standard protocols that you may find useful for product applications.

- [Western Blot](#)
- [Blocking Peptides](#)
- [Dot Blot](#)
- [Immunohistochemistry](#)
- [Immunofluorescence](#)
- [Immunoprecipitation](#)
- [Flow Cytometry](#)
- [Cell Culture](#)

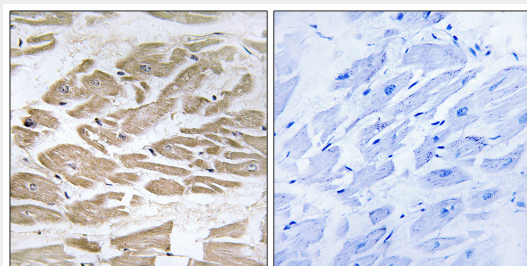
BRP44L Antibody - Images



Immunofluorescence analysis of A549 cells, using BRP44L antibody.



Western blot analysis of lysate from U-251 MG cell line, using BRP44L Antibody(C14781). C14781 was diluted at 1:1000. A goat anti-rabbit IgG H&L(HRP) at 1:5000 dilution was used as the secondary antibody. Lysate at 35ug.



Immunohistochemistry analysis of paraffin-embedded human heart tissue using BRP44L antibody.

BRP44L Antibody - Background

Mediates the uptake of pyruvate into mitochondria.

BRP44L Antibody - References

Zhang Q.-H., et al. Genome Res. 10:1546-1560(2000).

Lai C.-H., et al. Genome Res. 10:703-713(2000).

Ota T., et al. Nat. Genet. 36:40-45(2004).

Mungall A.J., et al. Nature 425:805-811(2003).

Yu W.-Q., et al. Submitted (JUN-2000) to the EMBL/GenBank/DDBJ databases.