

PHKG1 Antibody
Purified Rabbit Polyclonal Antibody (Pab)
Catalog # AP50061

Specification

PHKG1 Antibody - Product Information

Application	WB
Primary Accession	O16816
Reactivity	Human
Host	Rabbit
Clonality	Polyclonal
Calculated MW	45,49 KDa
Antigen Region	252-286

PHKG1 Antibody - Additional Information

Gene ID 5260

Other Names

Phosphorylase b kinase gamma catalytic chain, skeletal muscle/heart isoform, PHK-gamma-M, Phosphorylase kinase subunit gamma-1, Serine/threonine-protein kinase PHKG1, PHKG1, PHKG

Dilution

WB~~ 1:1000

Format

Rabbit IgG in phosphate buffered saline (without Mg²⁺ and Ca²⁺), pH 7.4, 150mM NaCl, 0.09% (W/V) sodium azide and 50% glycerol.

Storage Conditions

-20°C

PHKG1 Antibody - Protein Information

Name PHKG1

Synonyms PHKG

Function

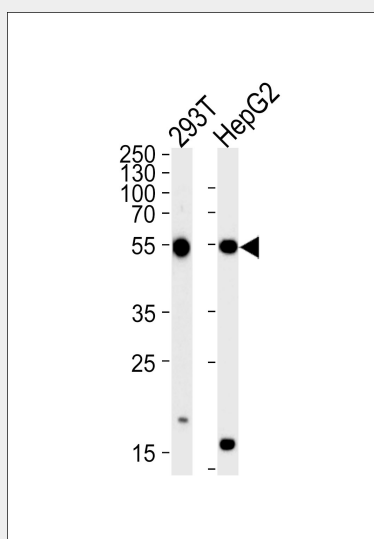
Catalytic subunit of the phosphorylase b kinase (PHK), which mediates the neural and hormonal regulation of glycogen breakdown (glycogenolysis) by phosphorylating and thereby activating glycogen phosphorylase. In vitro, phosphorylates PYGM, TNNI3, MAPT/TAU, GAP43 and NRGN/RC3 (By similarity).

PHKG1 Antibody - Protocols

Provided below are standard protocols that you may find useful for product applications.

- [Western Blot](#)
- [Blocking Peptides](#)
- [Dot Blot](#)
- [Immunohistochemistry](#)
- [Immunofluorescence](#)
- [Immunoprecipitation](#)
- [Flow Cytometry](#)
- [Cell Culture](#)

PHKG1 Antibody - Images



Western blot analysis of lysates from 293T, HepG2 cell line (from left to right), using PHKG1 Antibody (C21177). C21177 was diluted at 1:1000 at each lane. A goat anti-rabbit IgG H&L (HRP) at 1:5000 dilution was used as the secondary antibody. Lysates at 35 µg per lane.

PHKG1 Antibody - Background

Catalytic subunit of the phosphorylase b kinase (PHK), which mediates the neural and hormonal regulation of glycogen breakdown (glycogenolysis) by phosphorylating and thereby activating glycogen phosphorylase. In vitro, phosphorylates PYGM, TNNI3, MAPT/TAU, GAP43 and NRGN/RC3 (By similarity).

PHKG1 Antibody - References

- Wehner M., et al. Hum. Genet. 96:616-618 (1995).
Burwinkel B. Jr., et al. Submitted (APR-2000) to the EMBL/GenBank/DDBJ databases.
Ota T., et al. Nat. Genet. 36:40-45 (2004).
Hillier L.W., et al. Nature 424:157-164 (2003).
Mural R.J., et al. Submitted (JUL-2005) to the EMBL/GenBank/DDBJ databases.