

C1S Antibody
Purified Rabbit Polyclonal Antibody (Pab)
Catalog # AP50057**Specification**

C1S Antibody - Product Information

Application	WB, IHC
Primary Accession	P09871
Reactivity	Human
Host	Rabbit
Clonality	Polyclonal
Calculated MW	77 KDa
Antigen Region	560-589

C1S Antibody - Additional Information**Gene ID** 716**Other Names**

Complement C1s subcomponent, C1 esterase, Complement component 1 subcomponent s, Complement C1s subcomponent heavy chain, Complement C1s subcomponent light chain, C1S

Dilution

WB~~ 1:500-1:1000

IHC~~1:50-1:100

Format

Rabbit IgG in phosphate buffered saline (without Mg²⁺ and Ca²⁺), pH 7.4, 150mM NaCl, 0.09% (W/V) sodium azide and 50% glycerol.

Storage Conditions

-20°C

C1S Antibody - Protein Information**Name** C1S**Function**

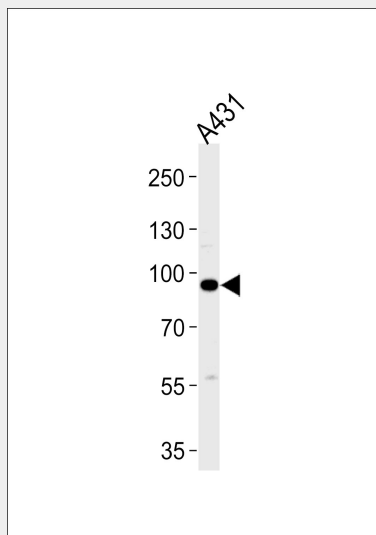
C1s B chain is a serine protease that combines with C1q and C1r to form C1, the first component of the classical pathway of the complement system. C1r activates C1s so that it can, in turn, activate C2 and C4. Cleaves also IGFBP5 and thereby inhibits the trophic effects of IGF1.

C1S Antibody - Protocols

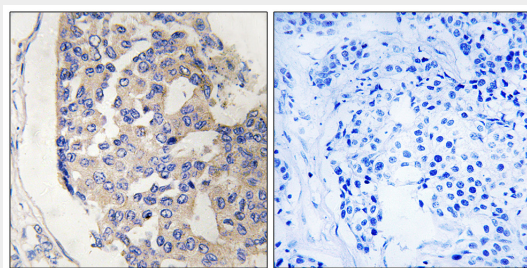
Provided below are standard protocols that you may find useful for product applications.

- [Western Blot](#)
- [Blocking Peptides](#)
- [Dot Blot](#)
- [Immunohistochemistry](#)
- [Immunofluorescence](#)
- [Immunoprecipitation](#)
- [Flow Cytometry](#)
- [Cell Culture](#)

C1S Antibody - Images



Western blot analysis of lysates from A431 cell line, using C1S Antibody (C15211). C15211 was diluted at 1:1000. A goat anti-rabbit IgG H&L (HRP) at 1:5000 dilution was used as the secondary antibody. Lysates at 35 µg.



Immunohistochemistry analysis of paraffin-embedded human breast carcinoma tissue, using C1S antibody.

C1S Antibody - Background

C1s B chain is a serine protease that combines with C1q and C1r to form C1, the first component of the classical pathway of the complement system. C1r activates C1s so that it can, in turn, activate C2 and C4.

C1S Antibody - References

- McKinnon C.M., et al. Eur. J. Biochem. 169:547-553 (1987).
Tosi M., et al. Biochemistry 26:8516-8524 (1987).
Kusumoto H., et al. Proc. Natl. Acad. Sci. U.S.A. 85:7307-7311 (1988).
Mural R.J., et al. Submitted (SEP-2005) to the EMBL/GenBank/DBJ databases.

Endo Y.,et al.J. Immunol. 161:4924-4930(1998).