

**Cytochrome P450 2A6 Antibody**  
**Purified Rabbit Polyclonal Antibody (Pab)**  
**Catalog # AP50056**

**Specification**

---

**Cytochrome P450 2A6 Antibody - Product Information**

Application	WB
Primary Accession	<a href="#">P11509</a>
Reactivity	Human
Host	Rabbit
Clonality	Polyclonal
Calculated MW	57 KDa
Antigen Region	15-43

**Cytochrome P450 2A6 Antibody - Additional Information**

**Gene ID** 1548

**Other Names**

Cytochrome P450 2A6, 11413-, 4-cineole 2-exo-monooxygenase, CYP11A6, Coumarin 7-hydroxylase, Cytochrome P450 IIA3, Cytochrome P450(I), CYP2A6, CYP2A3

**Dilution**

WB~~ 1:500-1:1000

**Format**

Rabbit IgG in phosphate buffered saline (without Mg<sup>2+</sup> and Ca<sup>2+</sup>), pH 7.4, 150mM NaCl, 0.09% (W/V) sodium azide and 50% glycerol.

**Storage Conditions**

-20°C

**Cytochrome P450 2A6 Antibody - Protein Information**

**Name** CYP2A6

**Synonyms** CYP2A3

**Function**

Exhibits a high coumarin 7-hydroxylase activity. Can act in the hydroxylation of the anti-cancer drugs cyclophosphamide and ifosphamide. Competent in the metabolic activation of aflatoxin B1. Constitutes the major nicotine C-oxidase. Acts as a 1,4-cineole 2-exo- monooxygenase. Possesses low phenacetin O-deethylation activity.

**Cellular Location**

Endoplasmic reticulum membrane; Peripheral membrane protein. Microsome membrane; Peripheral membrane protein

## Tissue Location

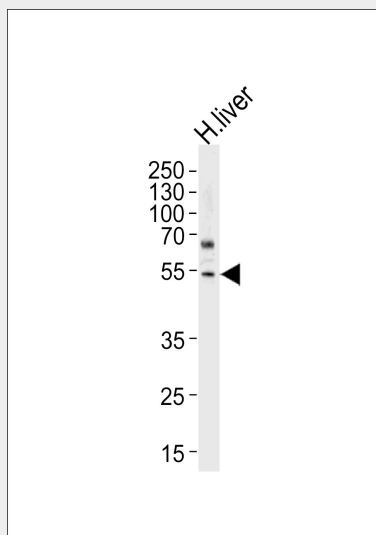
Liver.

## Cytochrome P450 2A6 Antibody - Protocols

Provided below are standard protocols that you may find useful for product applications.

- [Western Blot](#)
- [Blocking Peptides](#)
- [Dot Blot](#)
- [Immunohistochemistry](#)
- [Immunofluorescence](#)
- [Immunoprecipitation](#)
- [Flow Cytometry](#)
- [Cell Culture](#)

## Cytochrome P450 2A6 Antibody - Images



Western blot analysis of lysates from H.liver cell line ,using Cytochrome P450 2A6 Antibody(C12258). C12258 was diluted at 1:1000. A goat anti-rabbit IgG H&L(HRP) at 1:5000 dilution was used as the secondary antibody.Lysates at 35ug.

## Cytochrome P450 2A6 Antibody - Background

Exhibits a high coumarin 7-hydroxylase activity. Can act in the hydroxylation of the anti-cancer drugs cyclophosphamide and ifosphamide. Competent in the metabolic activation of aflatoxin B1. Constitutes the major nicotine C-oxidase. Acts as a 1,4- cineole 2-exo-monooxygenase. Possesses low phenacetin O- deethylation activity.

## Cytochrome P450 2A6 Antibody - References

- Miles J.S.,et al.Nucleic Acids Res. 17:2907-2917(1989).  
Yamano S.,et al.Nucleic Acids Res. 17:4888-4888(1989).  
Yamano S.,et al.Biochemistry 29:1322-1329(1990).  
Zhuge J.,et al.Submitted (SEP-1999) to the EMBL/GenBank/DDBJ databases.  
Ota T.,et al.Nat. Genet. 36:40-45(2004).