

KAPCG Antibody
Purified Rabbit Polyclonal Antibody (Pab)
Catalog # AP50053

Specification

KAPCG Antibody - Product Information

Application	WB
Primary Accession	P22612
Reactivity	Human
Host	Rabbit
Clonality	Polyclonal
Calculated MW	40 KDa
Antigen Region	1-31

KAPCG Antibody - Additional Information

Gene ID 5568

Other Names

cAMP-dependent protein kinase catalytic subunit gamma, PKA C-gamma, PRKACG

Dilution

WB~~ 1:1000

Format

Rabbit IgG in phosphate buffered saline (without Mg²⁺ and Ca²⁺), pH 7.4, 150mM NaCl, 0.09% (W/V) sodium azide and 50% glycerol.

Storage Conditions

-20°C

KAPCG Antibody - Protein Information

Name PRKACG

Function

Phosphorylates a large number of substrates in the cytoplasm and the nucleus.

Tissue Location

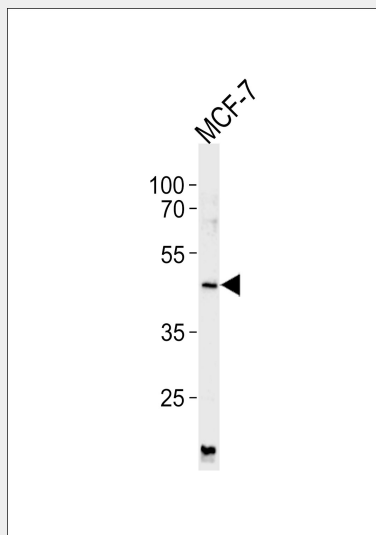
Testis specific. But important tissues such as brain and ovary have not been analyzed for the content of transcript

KAPCG Antibody - Protocols

Provided below are standard protocols that you may find useful for product applications.

- [Western Blot](#)
- [Blocking Peptides](#)
- [Dot Blot](#)
- [Immunohistochemistry](#)
- [Immunofluorescence](#)
- [Immunoprecipitation](#)
- [Flow Cytometry](#)
- [Cell Culture](#)

KAPCG Antibody - Images



Western blot analysis of lysates from MCF-7 cell line ,using KAPCG Antibody(C10451). C10451 was diluted at 1:1000. A goat anti-rabbit IgG H&L(HRP) at 1:5000 dilution was used as the secondary antibody.Lysates at 35ug.

KAPCG Antibody - Background

Phosphorylates a large number of substrates in the cytoplasm and the nucleus.

KAPCG Antibody - References

- Beebe S.J.,et al.Mol. Endocrinol. 4:465-475(1990).
Reinton N.,et al.Genomics 49:290-297(1998).
Humphray S.J.,et al.Nature 429:369-374(2004).
Greenman C.,et al.Nature 446:153-158(2007).