

Cytochrome c Antibody
Purified Rabbit Polyclonal Antibody (Pab)
Catalog # AP50048

Specification

Cytochrome c Antibody - Product Information

Application	WB, IHC
Primary Accession	P99999
Reactivity	Human, Mouse, Rat
Host	Rabbit
Clonality	Polyclonal
Calculated MW	12 KDa
Antigen Region	5-36

Cytochrome c Antibody - Additional Information

Gene ID 54205

Other Names

Cytochrome c, CYCS, CYC

Dilution

WB~~ 1:500-1:1000

IHC~~1:50-1:100

Format

Rabbit IgG in phosphate buffered saline (without Mg²⁺ and Ca²⁺), pH 7.4, 150mM NaCl, 0.09% (W/V) sodium azide and 50% glycerol.

Storage Conditions

-20°C

Cytochrome c Antibody - Protein Information

Name CYCS

Synonyms CYC

Function

Electron carrier protein. The oxidized form of the cytochrome c heme group can accept an electron from the heme group of the cytochrome c1 subunit of cytochrome reductase. Cytochrome c then transfers this electron to the cytochrome oxidase complex, the final protein carrier in the mitochondrial electron-transport chain.

Cellular Location

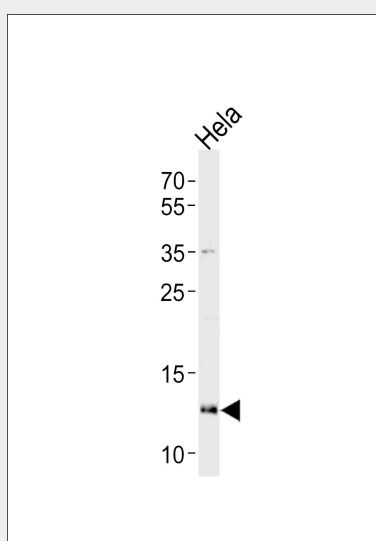
Mitochondrion intermembrane space. Note=Loosely associated with the inner membrane

Cytochrome c Antibody - Protocols

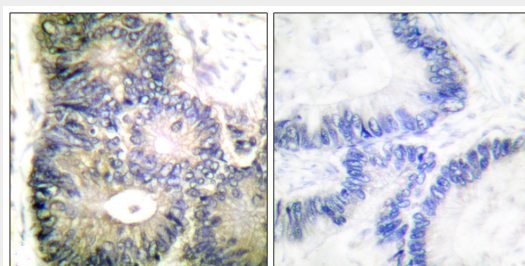
Provided below are standard protocols that you may find useful for product applications.

- [Western Blot](#)
- [Blocking Peptides](#)
- [Dot Blot](#)
- [Immunohistochemistry](#)
- [Immunofluorescence](#)
- [Immunoprecipitation](#)
- [Flow Cytometry](#)
- [Cell Culture](#)

Cytochrome c Antibody - Images



Western blot analysis of lysates from HeLa cell line, using Cytochrome c Antibody (C0170). C0170 was diluted at 1:1000. A goat anti-rabbit IgG H&L (HRP) at 1:5000 dilution was used as the secondary antibody. Lysates at 35 µg.



Immunohistochemical analysis of paraffin-embedded human colon carcinoma tissue using Cytochrome c antibody.

Cytochrome c Antibody - Background

Electron carrier protein. The oxidized form of the cytochrome c heme group can accept an electron from the heme group of the cytochrome c1 subunit of cytochrome reductase. Cytochrome c then transfers this electron to the cytochrome oxidase complex, the final protein carrier in the mitochondrial electron-transport chain.

Cytochrome c Antibody - References

Evans M.J.,et al.Proc. Natl. Acad. Sci. U.S.A. 85:9625-9629(1988).
Kalnine N.,et al.Submitted (MAY-2003) to the EMBL/GenBank/DDBJ databases.
Ota T.,et al.Nat. Genet. 36:40-45(2004).
Bechtel S.,et al.BMC Genomics 8:399-399(2007).
Hillier L.W.,et al.Nature 424:157-164(2003).

Cytochrome c Antibody - Citations

- [Isochamaejasmin induces toxic effects on Helicoverpa zea via DNA damage and mitochondria-associated apoptosis](#)
- [Changes in the mitochondrial protein profile due to ROS eruption during ageing of elm \(Ulmus pumila L.\) seeds.](#)