

ADD1 (Ab-726) Antibody
Purified Rabbit Polyclonal Antibody (Pab)
Catalog # AP50046

Specification

ADD1 (Ab-726) Antibody - Product Information

Application	IF, WB, IHC
Primary Accession	P35611
Reactivity	Human, Mouse, Rat
Host	Rabbit
Clonality	Polyclonal
Calculated MW	81,70,84 KDa
Antigen Region	705-734

ADD1 (Ab-726) Antibody - Additional Information

Gene ID 118

Other Names

Alpha-adducin, Erythrocyte adducin subunit alpha, ADD1, ADDA

Dilution

IF~~1:100

WB~~ 1:1000

IHC~~1:50-1:100

Format

Rabbit IgG in phosphate buffered saline (without Mg²⁺ and Ca²⁺), pH 7.4, 150mM NaCl, 0.09% (W/V) sodium azide and 50% glycerol.

Storage Conditions

-20°C

ADD1 (Ab-726) Antibody - Protein Information

Name ADD1

Synonyms ADDA

Function

Membrane-cytoskeleton-associated protein that promotes the assembly of the spectrin-actin network. Binds to calmodulin.

Cellular Location

Cytoplasm, cytoskeleton. Cell membrane; Peripheral membrane protein; Cytoplasmic side

Tissue Location

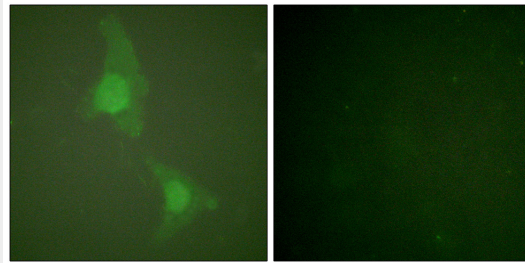
Expressed in all tissues. Found in much higher levels in reticulocytes than the beta subunit

ADD1 (Ab-726) Antibody - Protocols

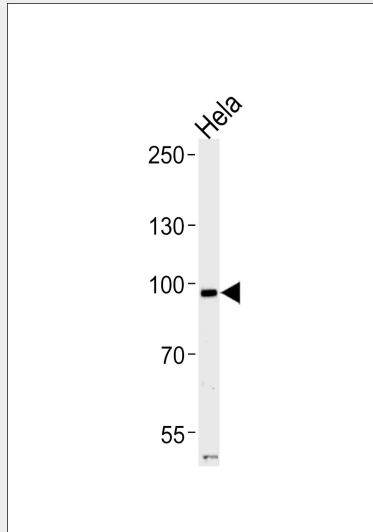
Provided below are standard protocols that you may find useful for product applications.

- [Western Blot](#)
- [Blocking Peptides](#)
- [Dot Blot](#)
- [Immunohistochemistry](#)
- [Immunofluorescence](#)
- [Immunoprecipitation](#)
- [Flow Cytometry](#)
- [Cell Culture](#)

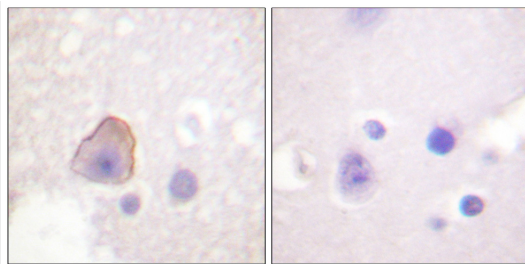
ADD1 (Ab-726) Antibody - Images



Immunofluorescence analysis of HeLa cells, using ADD1 (Ab-726) antibody .



Western blot analysis of lysates from HeLa cell line, using ADD1 (Ab-726) Antibody (B0002). B0002 was diluted at 1:1000. A goat anti-rabbit IgG H&L (HRP) at 1:5000 dilution was used as the secondary antibody. Lysates at 35ug.



Immunohistochemical analysis of paraffin-embedded human brain tissue using ADD1 (Ab-726) antibody .

ADD1 (Ab-726) Antibody - Background

Membrane-cytoskeleton-associated protein that promotes the assembly of the spectrin-actin network. Binds to calmodulin.

ADD1 (Ab-726) Antibody - References

Joshi R.L.,et al.J. Cell Biol. 115:665-675(1991).

Lin B.,et al.Genomics 25:93-99(1995).

Hillier L.W.,et al.Nature 434:724-731(2005).

Mural R.J.,et al.Submitted (SEP-2005) to the EMBL/GenBank/DDBJ databases.

Taylor S.A.,et al.Nat. Genet. 2:223-227(1992).