

KAP1 Antibody
Purified Rabbit Polyclonal Antibody (Pab)
Catalog # AP50041**Specification**

KAP1 Antibody - Product Information

Application	WB
Primary Accession	P31321
Reactivity	Human, Mouse, Rat
Host	Rabbit
Clonality	Polyclonal
Calculated MW	43 KDa
Antigen Region	131-160

KAP1 Antibody - Additional Information**Gene ID** 5575**Other Names**

cAMP-dependent protein kinase type I-beta regulatory subunit, PRKAR1B

Dilution

WB~~ 1:1000

FormatRabbit IgG in phosphate buffered saline (without Mg²⁺ and Ca²⁺), pH 7.4, 150mM NaCl, 0.09% (W/V) sodium azide and 50% glycerol.**Storage Conditions**

-20°C

KAP1 Antibody - Protein Information**Name** PRKAR1B**Function**

Regulatory subunit of the cAMP-dependent protein kinases involved in cAMP signaling in cells.

Cellular Location

Cell membrane.

Tissue Location

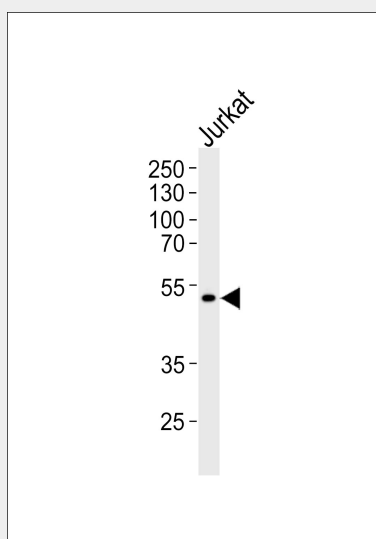
Four types of regulatory chains are found: I-alpha, I-beta, II-alpha, and II-beta. Their expression varies among tissues and is in some cases constitutive and in others inducible

KAP1 Antibody - Protocols

Provided below are standard protocols that you may find useful for product applications.

- [Western Blot](#)
- [Blocking Peptides](#)
- [Dot Blot](#)
- [Immunohistochemistry](#)
- [Immunofluorescence](#)
- [Immunoprecipitation](#)
- [Flow Cytometry](#)
- [Cell Culture](#)

KAP1 Antibody - Images



Western blot analysis of lysates from Jurkat cell line, using KAP1 Antibody (C10527). C10527 was diluted at 1:1000. A goat anti-rabbit IgG H&L (HRP) at 1:5000 dilution was used as the secondary antibody. Lysates at 35 µg.

KAP1 Antibody - Background

Regulatory subunit of the cAMP-dependent protein kinases involved in cAMP signaling in cells.

KAP1 Antibody - References

- Solberg R., et al. *Biochem. Biophys. Res. Commun.* 176:166-172 (1991).
Solberg R., et al. *Exp. Cell Res.* 214:595-605 (1994).
Ota T., et al. *Nat. Genet.* 36:40-45 (2004).
Zhan X., et al. *Anal. Biochem.* 354:279-289 (2006).
Daub H., et al. *Mol. Cell* 31:438-448 (2008).