

**P2RY13 Antibody**  
**Purified Rabbit Polyclonal Antibody (Pab)**  
**Catalog # AP50032**

**Specification**

---

**P2RY13 Antibody - Product Information**

Application	<b>WB</b>
Primary Accession	<a href="#">O9BPV8</a>
Reactivity	<b>Human, Rat</b>
Host	<b>Rabbit</b>
Clonality	<b>Polyclonal</b>
Calculated MW	<b>41,38 KDa</b>
Antigen Region	<b>215-243</b>

**P2RY13 Antibody - Additional Information**

**Gene ID** 53829

**Other Names**

P2Y purinoceptor 13, P2Y13, G-protein coupled receptor 86, G-protein coupled receptor 94, P2RY13, GPR86, GPR94

**Dilution**

WB~~ 1:1000

**Format**

Rabbit IgG in phosphate buffered saline (without Mg<sup>2+</sup> and Ca<sup>2+</sup>), pH 7.4, 150mM NaCl, 0.09% (W/V) sodium azide and 50% glycerol.

**Storage Conditions**

-20°C

**P2RY13 Antibody - Protein Information**

**Name** P2RY13

**Synonyms** GPR86, GPR94

**Function**

Receptor for ADP. Coupled to G(i)-proteins. May play a role in hematopoiesis and the immune system.

**Cellular Location**

Cell membrane; Multi-pass membrane protein.

**Tissue Location**

Strong expression in spleen and adult brain. Lower expression in placenta, lung, liver, spinal cord, thymus, small intestine, uterus, stomach, testis, fetal brain, and adrenal gland. Not detected in

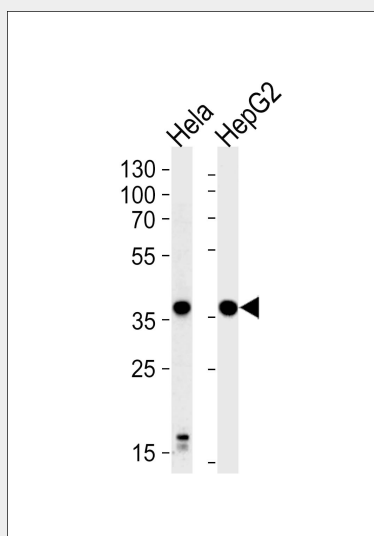
pancreas, heart, kidney, skeletal muscle, ovary or fetal aorta. Clearly detected in lymph node and bone marrow, weakly detected in peripheral blood mononuclear cells (PBMC) and in peripheral blood leukocytes (PBL), but not detected in polymorphonuclear cells (PMN). In the brain, detected in all brain regions examined

### P2RY13 Antibody - Protocols

Provided below are standard protocols that you may find useful for product applications.

- [Western Blot](#)
- [Blocking Peptides](#)
- [Dot Blot](#)
- [Immunohistochemistry](#)
- [Immunofluorescence](#)
- [Immunoprecipitation](#)
- [Flow Cytometry](#)
- [Cell Culture](#)

### P2RY13 Antibody - Images



Western blot analysis of lysates from HeLa, HepG2 cell line, using P2RY13 Antibody (G716). G716 was diluted at 1:1000. A goat anti-rabbit IgG H&L (HRP) at 1:5000 dilution was used as the secondary antibody. Lysates at 35ug.

### P2RY13 Antibody - Background

Receptor for ADP. Coupled to G(i)-proteins. May play a role in hematopoiesis and the immune system.

### P2RY13 Antibody - References

- Lee D.K., et al. Gene 275:83-91(2001).  
Communi D., et al. J. Biol. Chem. 276:41479-41485(2001).  
Wittenberger T., et al. J. Mol. Biol. 307:799-813(2001).  
Wang Y.-G., et al. Submitted (FEB-2001) to the EMBL/GenBank/DDBJ databases.  
Takeda S., et al. FEBS Lett. 520:97-101(2002).