

Uba2 Antibody
Purified Rabbit Polyclonal Antibody (Pab)
Catalog # AP50026**Specification**

Uba2 Antibody - Product Information

Application	WB, IHC
Primary Accession	O9UBT2
Reactivity	Human
Host	Rabbit
Clonality	Polyclonal
Calculated MW	71,90(actual) KDa
Antigen Region	605-637

Uba2 Antibody - Additional Information**Gene ID** 10054**Other Names**

SUMO-activating enzyme subunit 2, 632-, Anthracycline-associated resistance ARX, Ubiquitin-like 1-activating enzyme E1B, Ubiquitin-like modifier-activating enzyme 2, UBA2, SAE2, UBLE1B

Dilution

WB~~ 1:1000

IHC~~1:50-1:100

FormatRabbit IgG in phosphate buffered saline (without Mg²⁺ and Ca²⁺), pH 7.4, 150mM NaCl, 0.09% (W/V) sodium azide and 50% glycerol.**Storage Conditions**

-20°C

Uba2 Antibody - Protein Information**Name** UBA2**Synonyms** SAE2, UBLE1B**Function**

The heterodimer acts as an E1 ligase for SUMO1, SUMO2, SUMO3, and probably SUMO4. It mediates ATP-dependent activation of SUMO proteins followed by formation of a thioester bond between a SUMO protein and a conserved active site cysteine residue on UBA2/SAE2.

Cellular Location

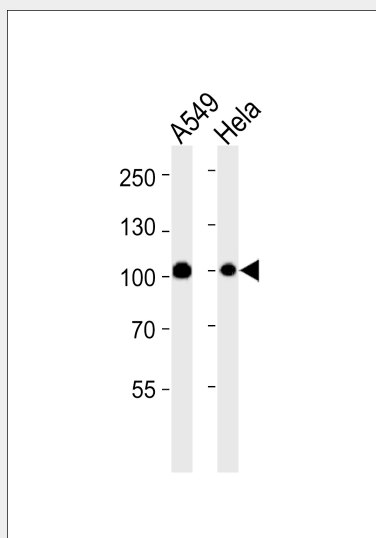
Cytoplasm. Nucleus. Note=Shuttles between the cytoplasm and the nucleus, sumoylation is required either for nuclear translocation or nuclear retention

Uba2 Antibody - Protocols

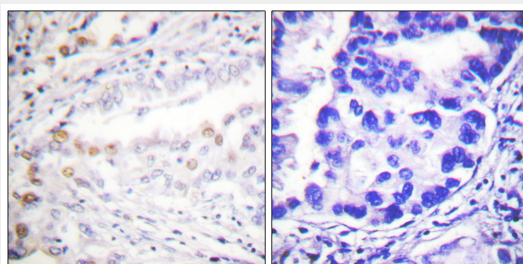
Provided below are standard protocols that you may find useful for product applications.

- [Western Blot](#)
- [Blocking Peptides](#)
- [Dot Blot](#)
- [Immunohistochemistry](#)
- [Immunofluorescence](#)
- [Immunoprecipitation](#)
- [Flow Cytometry](#)
- [Cell Culture](#)

Uba2 Antibody - Images



Western blot analysis of lysates from A549, HeLa cell line (from left to right), using Uba2 Antibody (C0383). C0383 was diluted at 1:1000 at each lane. A goat anti-rabbit IgG H&L (HRP) at 1:5000 dilution was used as the secondary antibody. Lysates at 35 µg per lane.



Immunohistochemistry analysis of paraffin-embedded human lung carcinoma tissue using Uba2 antibody.

Uba2 Antibody - Background

The heterodimer acts as a E1 ligase for SUMO1, SUMO2, SUMO3, and probably SUMO4. It mediates ATP-dependent activation of SUMO proteins followed by formation of a thioester bond between a SUMO protein and a conserved active site cysteine residue on UBA2/SAE2.

Uba2 Antibody - References

- Okuma T.,et al.Biochem. Biophys. Res. Commun. 254:693-698(1999).
Gong L.,et al.FEBS Lett. 448:185-189(1999).
Desterro J.M.P.,et al.J. Biol. Chem. 274:10618-10624(1999).
Slapak C.,et al.Submitted (SEP-1995) to the EMBL/GenBank/DDBJ databases.
Wiemann S.,et al.Genome Res. 11:422-435(2001).