

**NSE Antibody**  
**Purified Rabbit Polyclonal Antibody (Pab)**  
**Catalog # AP50004**

**Specification**

---

**NSE Antibody - Product Information**

Application	IF, WB, IHC
Primary Accession	<a href="#">P09104</a>
Reactivity	Human, Mouse, Rat
Host	Rabbit
Clonality	Polyclonal
Calculated MW	47 KDa
Antigen Region	392-425

**NSE Antibody - Additional Information**

**Gene ID** 2026

**Other Names**

Gamma-enolase, 2-phospho-D-glycerate hydro-lyase, Enolase 2, Neural enolase, Neuron-specific enolase, NSE, ENO2

**Dilution**

IF~~1:100  
WB~~ 1:1000  
IHC~~1:50-1:100

**Format**

Rabbit IgG in phosphate buffered saline (without Mg<sup>2+</sup> and Ca<sup>2+</sup>), pH 7.4, 150mM NaCl, 0.09% (W/V) sodium azide and 50% glycerol.

**Storage Conditions**

-20°C

**NSE Antibody - Protein Information**

**Name** ENO2

**Function**

Has neurotrophic and neuroprotective properties on a broad spectrum of central nervous system (CNS) neurons. Binds, in a calcium- dependent manner, to cultured neocortical neurons and promotes cell survival (By similarity).

**Cellular Location**

Cytoplasm. Cell membrane. Note=Can translocate to the plasma membrane in either the homodimeric (alpha/alpha) or heterodimeric (alpha/gamma) form

**Tissue Location**

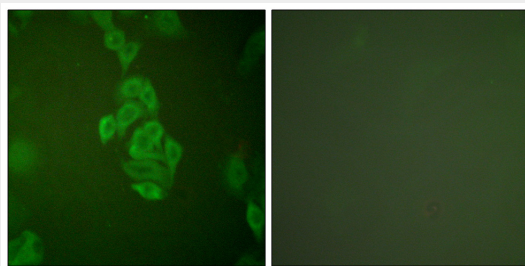
The alpha/alpha homodimer is expressed in embryo and in most adult tissues. The alpha/beta heterodimer and the beta/beta homodimer are found in striated muscle, and the alpha/gamma heterodimer and the gamma/gamma homodimer in neurons

## NSE Antibody - Protocols

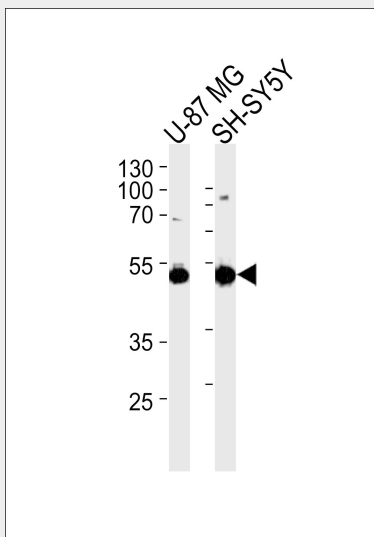
Provided below are standard protocols that you may find useful for product applications.

- [Western Blot](#)
- [Blocking Peptides](#)
- [Dot Blot](#)
- [Immunohistochemistry](#)
- [Immunofluorescence](#)
- [Immunoprecipitation](#)
- [Flow Cytometry](#)
- [Cell Culture](#)

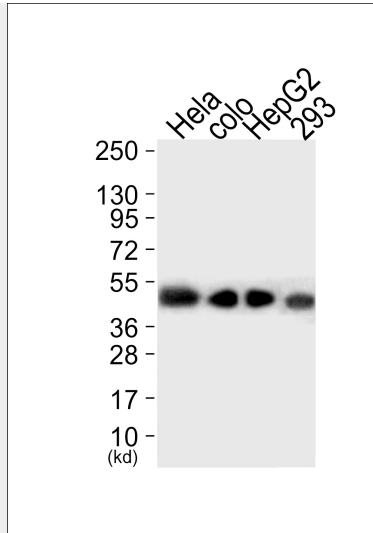
## NSE Antibody - Images



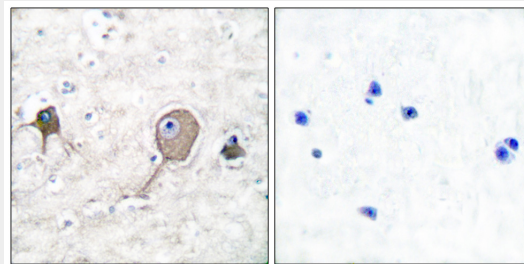
Immunofluorescence analysis of A549 cells, using NSE antibody .



Western blot analysis of lysates from U-87 MG, SH-SY5Y cell line (from left to right), using NSE Antibody (C0280). C0280 was diluted at 1:1000 at each lane. A goat anti-rabbit IgG H&L (HRP) at 1:5000 dilution was used as the secondary antibody. Lysates at 35 µg per lane.



Western blot analysis of extracts from HeLa cells (Lane 1), colo cells(Lane 2)□HepG2 cells(Lane 3) and 293 cells (Lane 4), using NSE Antibody. The lane on the left is treated with synthesized peptide.



Immunohistochemical analysis of paraffin-embedded human brain tissue using NSE antibody .

### **NSE Antibody - Background**

Has neurotrophic and neuroprotective properties on a broad spectrum of central nervous system (CNS) neurons. Binds, in a calcium-dependent manner, to cultured neocortical neurons and promotes cell survival (By similarity).

### **NSE Antibody - References**

- McAleese S.M.,et al.Eur. J. Biochem. 178:413-417(1988).
- van Obberghen E.,et al.J. Neurosci. Res. 19:450-456(1988).
- Oliva D.,et al.Gene 79:355-360(1989).
- Oliva D.,et al.Genomics 10:157-165(1991).
- Ansari-Lari M.A.,et al.Genome Res. 7:268-280(1997).