

**p130 Cas Antibody (Ab-410)**  
**Purified Rabbit Polyclonal Antibody (Pab)**  
**Catalog # AP50000**

**Specification**

---

**p130 Cas Antibody (Ab-410) - Product Information**

Application	<b>WB, IHC</b>
Primary Accession	<a href="#">P56945</a>
Reactivity	<b>Human, Mouse, Rat</b>
Host	<b>Rabbit</b>
Clonality	<b>Polyclonal</b>
Calculated MW	<b>93 KDa</b>
Antigen Region	<b>400-430</b>

**p130 Cas Antibody (Ab-410) - Additional Information**

**Gene ID** 9564

**Other Names**

Breast cancer anti-estrogen resistance protein 1, CRK-associated substrate, Cas scaffolding protein family member 1, p130cas, BCAR1, CAS, CASS1, CRKAS

**Dilution**

WB~~ 1:1000  
IHC~~1:50-1:100

**Format**

Rabbit IgG in phosphate buffered saline (without Mg<sup>2+</sup> and Ca<sup>2+</sup>), pH 7.4, 150mM NaCl, 0.09% (W/V) sodium azide and 50% glycerol.

**Storage Conditions**

-20°C

**p130 Cas Antibody (Ab-410) - Protein Information**

**Name** BCAR1

**Synonyms** CAS, CASS1, CRKAS

**Function**

Docking protein which plays a central coordinating role for tyrosine kinase-based signaling related to cell adhesion (PubMed:<a href="http://www.uniprot.org/citations/12432078" target="\_blank">12432078</a>, PubMed:<a href="http://www.uniprot.org/citations/12832404" target="\_blank">12832404</a>). Implicated in induction of cell migration and cell branching (PubMed:<a href="http://www.uniprot.org/citations/12432078" target="\_blank">12432078</a>, PubMed:<a href="http://www.uniprot.org/citations/12832404" target="\_blank">12832404</a>, PubMed:<a href="http://www.uniprot.org/citations/17038317" target="\_blank">17038317</a>). Involved in the BCAR3-mediated inhibition of TGFB signaling (By similarity).

### Cellular Location

Cell junction, focal adhesion. Cytoplasm Cell projection, axon {ECO:0000250|UniProtKB:Q61140}  
Note=Unphosphorylated form localizes in the cytoplasm (By similarity) Localizes to focal adhesion sites following integrin engagement (By similarity). {ECO:0000250|UniProtKB:Q61140}

### Tissue Location

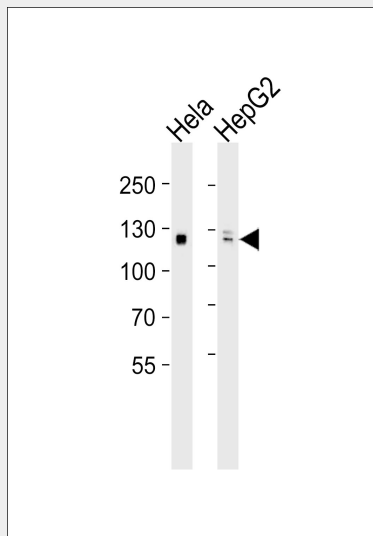
Expressed in B-cells (at protein level) (PubMed:9020138). Widely expressed with an abundant expression in the testis (PubMed:10639512). Low level of expression seen in the liver, thymus, and peripheral blood leukocytes (PubMed:10639512)

### p130 Cas Antibody (Ab-410) - Protocols

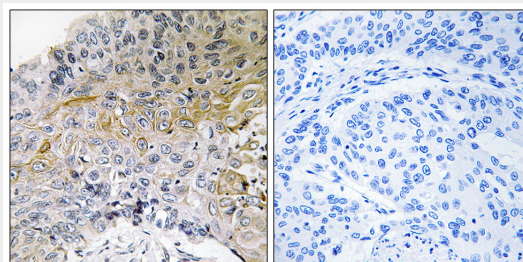
Provided below are standard protocols that you may find useful for product applications.

- [Western Blot](#)
- [Blocking Peptides](#)
- [Dot Blot](#)
- [Immunohistochemistry](#)
- [Immunofluorescence](#)
- [Immunoprecipitation](#)
- [Flow Cytometry](#)
- [Cell Culture](#)

### p130 Cas Antibody (Ab-410) - Images



Western blot analysis of lysates from HeLa, HepG2 cell line (from left to right), using p130 Cas Antibody (Ab-410) (B0077). B0077 was diluted at 1:1000 at each lane. A goat anti-rabbit IgG H&L(HRP) at 1:5000 dilution was used as the secondary antibody. Lysates at 35ug per lane.



Immunohistochemical analysis of paraffin-embedded human breast carcinoma tissue using p130 Cas (Ab-410) antibody .

#### **p130 Cas Antibody (Ab-410) - Background**

Docking protein which plays a central coordinating role for tyrosine kinase-based signaling related to cell adhesion. Implicated in induction of cell migration. Overexpression confers antiestrogen resistance on breast cancer cells.

#### **p130 Cas Antibody (Ab-410) - References**

Brinkman A.,et al.J. Natl. Cancer Inst. 92:112-120(2000).  
Otto E.,et al.Submitted (DEC-1999) to the EMBL/GenBank/DDBJ databases.  
Imoto Y.,et al.Submitted (MAR-2000) to the EMBL/GenBank/DDBJ databases.  
Lin L.,et al.Submitted (FEB-2004) to the EMBL/GenBank/DDBJ databases.  
Ota T.,et al.Nat. Genet. 36:40-45(2004).