

**FCGR1A Antibody (Center)**  
**Affinity Purified Rabbit Polyclonal Antibody (Pab)**  
**Catalog # AP4930C**

**Specification**

---

**FCGR1A Antibody (Center) - Product Information**

Application	WB, IHC-P, FC,E
Primary Accession	<a href="#">P12314</a>
Reactivity	Human
Host	Rabbit
Clonality	Polyclonal
Isotype	Rabbit IgG
Calculated MW	42632
Antigen Region	217-245

**FCGR1A Antibody (Center) - Additional Information**

**Gene ID** 2209

**Other Names**

High affinity immunoglobulin gamma Fc receptor I, IgG Fc receptor I, Fc-gamma RI, FcRI, Fc-gamma RIA, FcgammaRIa, CD64, FCGR1A, FCG1, FCGR1, IGFR1

**Target/Specificity**

This FCGR1A antibody is generated from rabbits immunized with a KLH conjugated synthetic peptide between 217-245 amino acids from the Central region of human FCGR1A.

**Dilution**

WB~~1:1000  
IHC-P~~1:50~100  
FC~~1:10~50

**Format**

Purified polyclonal antibody supplied in PBS with 0.09% (W/V) sodium azide. This antibody is purified through a protein A column, followed by peptide affinity purification.

**Storage**

Maintain refrigerated at 2-8°C for up to 2 weeks. For long term storage store at -20°C in small aliquots to prevent freeze-thaw cycles.

**Precautions**

FCGR1A Antibody (Center) is for research use only and not for use in diagnostic or therapeutic procedures.

**FCGR1A Antibody (Center) - Protein Information**

**Name** FCGR1A

**Synonyms** FCG1, FCGR1, IGFR1

**Function** High affinity receptor for the Fc region of immunoglobulins gamma. Functions in both innate and adaptive immune responses. Mediates IgG effector functions on monocytes triggering antibody-dependent cellular cytotoxicity (ADCC) of virus-infected cells.

**Cellular Location**

Cell membrane; Single-pass type I membrane protein Note=Stabilized at the cell membrane through interaction with FCER1G

**Tissue Location**

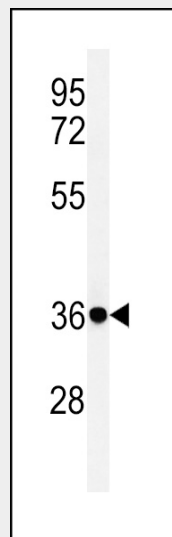
Monocyte/macrophage specific.

**FCGR1A Antibody (Center) - Protocols**

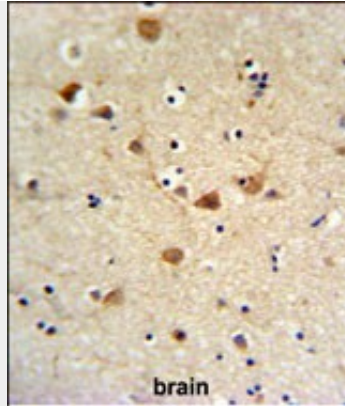
Provided below are standard protocols that you may find useful for product applications.

- [Western Blot](#)
- [Blocking Peptides](#)
- [Dot Blot](#)
- [Immunohistochemistry](#)
- [Immunofluorescence](#)
- [Immunoprecipitation](#)
- [Flow Cytometry](#)
- [Cell Culture](#)

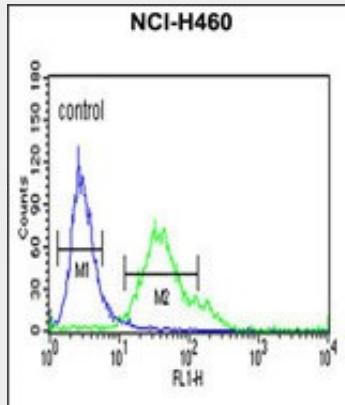
**FCGR1A Antibody (Center) - Images**



Western blot analysis of FCGR1A Antibody (Center) (Cat. #AP4930c) in NCI-H460 cell line lysates (35ug/lane). FCGR1A (arrow) was detected using the purified Pab.



FCGR1A Antibody (Center) (Cat. #AP4930c) IHC analysis in formalin fixed and paraffin embedded brain tissue followed by peroxidase conjugation of the secondary antibody and DAB staining. This data demonstrates the use of the FCGR1A Antibody (Center) for immunohistochemistry. Clinical relevance has not been evaluated.



FCGR1A Antibody (Center) (Cat. #AP4930c) flow cytometric analysis of NCI-H460 cells (right histogram) compared to a negative control cell (left histogram). FITC-conjugated goat-anti-rabbit secondary antibodies were used for the analysis.

### **FCGR1A Antibody (Center) - Background**

FCGR1A encodes a protein that plays an important role in the immune response. This protein is a high-affinity Fc-gamma receptor. The gene is one of three related gene family members located on chromosome 1.

### **FCGR1A Antibody (Center) - References**

- Poon, I.K., et al. Blood 115(12):2473-2482(2010)
- Jung, S.T., et al. Proc. Natl. Acad. Sci. U.S.A. 107(2):604-609(2010)
- Hulse, K.E., et al. J. Allergy Clin. Immunol. 125(1):247-256(2010)