

FUT6 Antibody (Center)
Affinity Purified Rabbit Polyclonal Antibody (Pab)
Catalog # AP4925c**Specification**

FUT6 Antibody (Center) - Product Information

| | |
|-------------------|------------------------|
| Application | WB, IHC-P, FC,E |
| Primary Accession | P51993 |
| Reactivity | Human |
| Host | Rabbit |
| Clonality | Polyclonal |
| Isotype | Rabbit IgG |
| Calculated MW | 41860 |
| Antigen Region | 102-130 |

FUT6 Antibody (Center) - Additional Information**Gene ID** 2528**Other Names**

Alpha-(1, 3)-fucosyltransferase 6, Fucosyltransferase 6, Fucosyltransferase VI, Fuc-TVI, FucT-VI, Galactoside 3-L-fucosyltransferase, FUT6, FCT3A

Target/Specificity

This FUT6 antibody is generated from rabbits immunized with a KLH conjugated synthetic peptide between 102-130 amino acids from the Central region of human FUT6.

DilutionWB~~1:1000
IHC-P~~1:50~100
FC~~1:10~50**Format**

Purified polyclonal antibody supplied in PBS with 0.09% (W/V) sodium azide. This antibody is purified through a protein A column, followed by peptide affinity purification.

Storage

Maintain refrigerated at 2-8°C for up to 2 weeks. For long term storage store at -20°C in small aliquots to prevent freeze-thaw cycles.

Precautions

FUT6 Antibody (Center) is for research use only and not for use in diagnostic or therapeutic procedures.

FUT6 Antibody (Center) - Protein Information**Name** FUT6 ([HGNC:4017](#))

Synonyms FCT3A

Function [Isoform 1]: Catalyzes the transfer of L-fucose, from a guanosine diphosphate-beta-L-fucose, to the N-acetyl glucosamine (GlcNAc) of a distal alpha2,3 sialylated lactosamine unit of a glycoprotein- or a glycolipid-linked sialopolylactosamines chain or of a distal or internal lactosamine unit of a neutral glycoprotein- or a glycolipid-linked polyactosamines chain through an alpha-1,3 glycosidic linkage and participates in surface expression of the sialyl Lewis X (sLe(x)), Lewis X (Le(x)) and non sialylated VIM2 determinants (PubMed:[10728707](#), PubMed:[1339443](#), PubMed:[1520296](#), PubMed:[17604274](#), PubMed:[29593094](#), PubMed:[7650030](#), PubMed:[9363434](#), PubMed:[9451035](#)). Moreover transfers fucose to H-type 2 (Fucalpha1-2Galbeta1-4GlcNAc) chain acceptor substrates and participates in difucosylated sialyl Lewis x determinants (PubMed:[1339443](#), PubMed:[17604274](#)). Also fucosylates a polyactosamine substrate having a 6 sulfate modification at the GlcNAc moiety and gives rise to sialyl and non-sialyl 6-sulfo lewis X (PubMed:[10728707](#)). Does not have activity towards type 1 ((Galbeta1-3GlcNAc)) and H-type 1 chain (Fucalpha1-2Galbeta1-3GlcNAc) acceptors substrates (PubMed:[1339443](#), PubMed:[17604274](#), PubMed:[9363434](#)).

Cellular Location

Golgi apparatus, Golgi stack membrane; Single- pass type II membrane protein. Golgi apparatus. Secreted Note=Membrane-bound form in trans cisternae of Golgi

Tissue Location

Kidney, liver, colon, small intestine, bladder, uterus and salivary gland

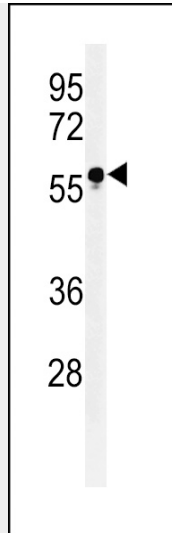
FUT6 Antibody (Center) - Protocols

Provided below are standard protocols that you may find useful for product applications.

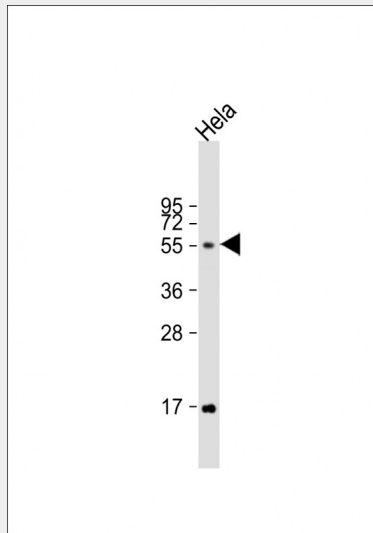
- [Western Blot](#)
- [Blocking Peptides](#)
- [Dot Blot](#)
- [Immunohistochemistry](#)
- [Immunofluorescence](#)
- [Immunoprecipitation](#)
- [Flow Cytometry](#)
- [Cell Culture](#)

FUT6 Antibody (Center) - Images

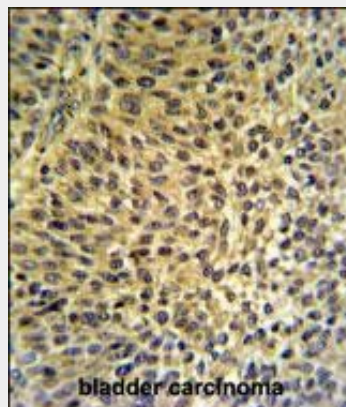




Western blot analysis of FUT6 Antibody (Center) (Cat. #AP4925c) in HL-60 cell line lysates (35ug/lane). FUT6 (arrow) was detected using the purified Pab.

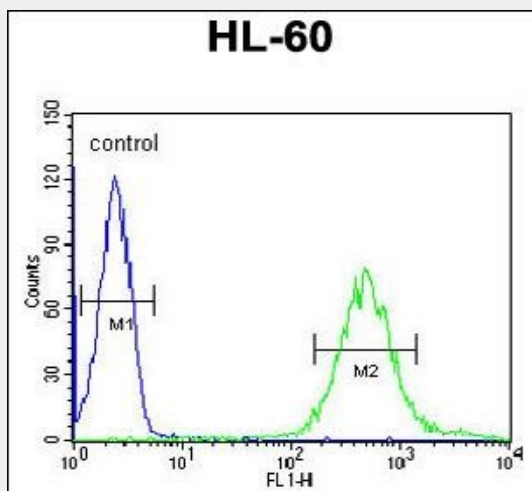


Anti-FUT6 Antibody (Center) at 1:1000 dilution + HeLa whole cell lysate Lysates/proteins at 20 μ g per lane. Secondary Goat Anti-Rabbit IgG, (H+L), Peroxidase conjugated at 1/10000 dilution. Predicted band size : 42 kDa Blocking/Dilution buffer: 5% NFDN/TBST.



FUT6 Antibody (Center) (Cat. #AP4925c) IHC analysis in formalin fixed and paraffin embedded bladder carcinoma followed by peroxidase conjugation of the secondary antibody and DAB

staining. This data demonstrates the use of the FUT6 Antibody (Center) for immunohistochemistry. Clinical relevance has not been evaluated.



FUT6 Antibody (Center) (Cat. #AP4925c) flow cytometric analysis of HL-60 cells (right histogram) compared to a negative control cell (left histogram). FITC-conjugated goat-anti-rabbit secondary antibodies were used for the analysis.

FUT6 Antibody (Center) - Background

FUT6 is a Golgi stack membrane protein that is involved in the creation of sialyl-Lewis X, an E-selectin ligand.

FUT6 Antibody (Center) - References

- Norden, R., et al. *Glycobiology* 19(7):776-788(2009)
- Higai, K., et al. *Glycoconj. J.* 25(3):225-235(2008)
- Martinez-Duncker, I., et al. *Glycobiology* 14(1):13-25(2004)