

**HSP90B1 Antibody (N-term)**  
**Affinity Purified Rabbit Polyclonal Antibody (Pab)**  
**Catalog # AP4899A**

**Specification**

---

**HSP90B1 Antibody (N-term) - Product Information**

Application	IF, WB, IHC-P, FC,E
Primary Accession	<a href="#">P14625</a>
Other Accession	<a href="#">Q66HD0</a> , <a href="#">Q29092</a> , <a href="#">P08113</a> , <a href="#">Q4R520</a> , <a href="#">P08110</a> , <a href="#">Q95M18</a>
Reactivity	Human, Hamster, Mouse
Predicted	Bovine, Chicken, Monkey, Pig, Rat
Host	Rabbit
Clonality	Polyclonal
Isotype	Rabbit IgG
Calculated MW	92469
Antigen Region	16-43

**HSP90B1 Antibody (N-term) - Additional Information**

**Gene ID** 7184

**Other Names**

Endoplasmin, 94 kDa glucose-regulated protein, GRP-94, Heat shock protein 90 kDa beta member 1, Tumor rejection antigen 1, gp96 homolog, HSP90B1, GRP94, TRA1

**Target/Specificity**

This HSP90B1 antibody is generated from rabbits immunized with a KLH conjugated synthetic peptide between 16-43 amino acids from the N-terminal region of human HSP90B1.

**Dilution**

IF~~1:10~50  
WB~~1:1000  
IHC-P~~1:50~100  
FC~~1:10~50

**Format**

Purified polyclonal antibody supplied in PBS with 0.09% (W/V) sodium azide. This antibody is purified through a protein A column, followed by peptide affinity purification.

**Storage**

Maintain refrigerated at 2-8°C for up to 2 weeks. For long term storage store at -20°C in small aliquots to prevent freeze-thaw cycles.

**Precautions**

HSP90B1 Antibody (N-term) is for research use only and not for use in diagnostic or therapeutic procedures.

**HSP90B1 Antibody (N-term) - Protein Information**

**Name** HSP90B1 ([HGNC:12028](#))

**Function** Molecular chaperone that functions in the processing and transport of secreted proteins (By similarity). When associated with CNPY3, required for proper folding of Toll-like receptors (By similarity). Functions in endoplasmic reticulum associated degradation (ERAD) (PubMed:[18264092](#)). Has ATPase activity (By similarity). May participate in the unfolding of cytosolic leaderless cargos (lacking the secretion signal sequence) such as the interleukin 1/IL-1 to facilitate their translocation into the ERGIC (endoplasmic reticulum- Golgi intermediate compartment) and secretion; the translocation process is mediated by the cargo receptor TMED10 (PubMed:[32272059](#)).

#### **Cellular Location**

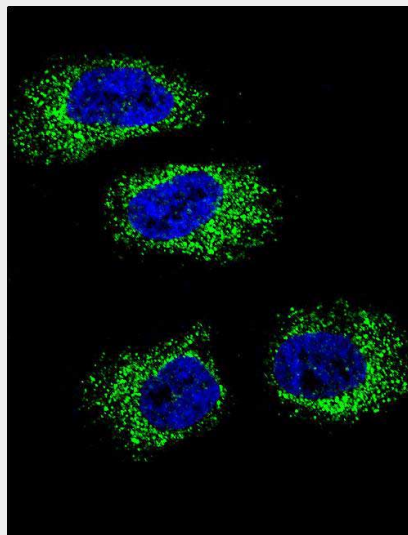
Endoplasmic reticulum lumen. Sarcoplasmic reticulum lumen {ECO:0000250|UniProtKB:P41148}. Melanosome Note=Identified by mass spectrometry in melanosome fractions from stage I to stage IV.

#### **HSP90B1 Antibody (N-term) - Protocols**

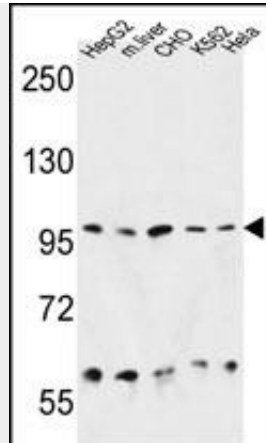
Provided below are standard protocols that you may find useful for product applications.

- [Western Blot](#)
- [Blocking Peptides](#)
- [Dot Blot](#)
- [Immunohistochemistry](#)
- [Immunofluorescence](#)
- [Immunoprecipitation](#)
- [Flow Cytometry](#)
- [Cell Culture](#)

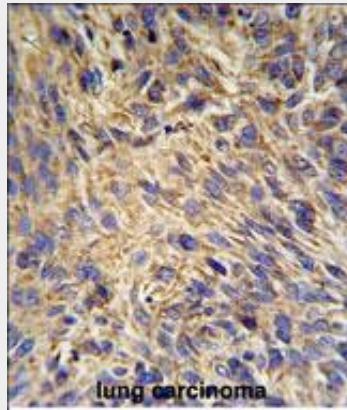
#### **HSP90B1 Antibody (N-term) - Images**



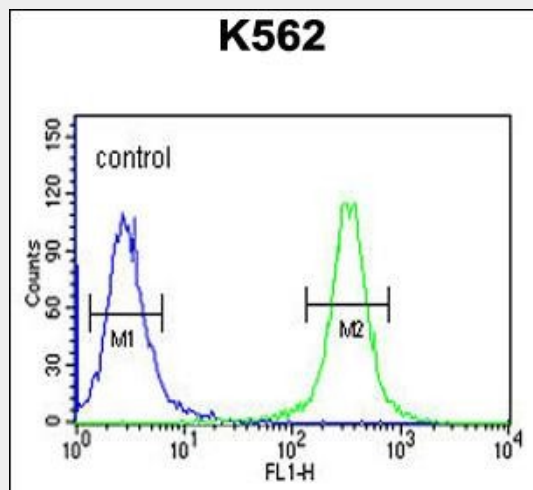
Confocal immunofluorescent analysis of HSP90B1 Antibody (N-term)(Cat#AP4899a) with NCI-H460 cell followed by Alexa Fluor 488-conjugated goat anti-rabbit IgG (green). DAPI was used to stain the cell nuclear (blue).



HSP90B1 Antibody (N-term) (Cat. #AP4899a) western blot analysis in HepG2, CHO, K562, HeLa cell line and mouse liver tissue lysates (35ug/lane). This demonstrates the HSP90B1 antibody detected the HSP90B1 protein (arrow).



HSP90B1 Antibody (N-term) (Cat. #AP4899a) IHC analysis in formalin fixed and paraffin embedded human lung carcinoma followed by peroxidase conjugation of the secondary antibody and DAB staining. This data demonstrates the use of the HSP90B1 Antibody (N-term) for immunohistochemistry. Clinical relevance has not been evaluated.



HSP90B1 Antibody (N-term) (Cat. #AP4899a) flow cytometric analysis of K562 cells (right histogram) compared to a negative control cell (left histogram). FITC-conjugated goat-anti-rabbit secondary antibodies were used for the analysis.

**HSP90B1 Antibody (N-term) - Background**

HSP90B1 is highly conserved molecular chaperones that have key roles in signal transduction, protein folding, protein degradation, and morphologic evolution. HSP90 proteins normally associate with other cochaperones and play important roles in folding newly synthesized proteins or stabilizing and refolding denatured proteins after stress. HSP90B1 is an endoplasmic reticulum HSP90 protein. Other HSP90 proteins are found in cytosol.

#### **HSP90B1 Antibody (N-term) - References**

Koo, B.H., et al. J. Biol. Chem. 285(1):197-205(2010) Suriano, R., et al. Glycobiology 19(12):1427-1435(2009) Lev, A., et al. J. Immunol. 183(7):4205-4210(2009)

#### **HSP90B1 Antibody (N-term) - Citations**

- [The high-fat diet induces myocardial fibrosis in the metabolically healthy obese minipigs-The role of ER stress and oxidative stress.](#)