

GSDMA Antibody (N-term)
Affinity Purified Rabbit Polyclonal Antibody (Pab)
Catalog # AP4887a

Specification

GSDMA Antibody (N-term) - Product Information

| | |
|-------------------|------------------------|
| Application | WB, IHC-P, FC,E |
| Primary Accession | O96QA5 |
| Reactivity | Human, Mouse |
| Host | Rabbit |
| Clonality | Polyclonal |
| Isotype | Rabbit IgG |
| Calculated MW | 49365 |
| Antigen Region | 66-94 |

GSDMA Antibody (N-term) - Additional Information

Gene ID 284110

Other Names

Gasdermin-A, Gasdermin-1, GSDMA, GSDM, GSDM1

Target/Specificity

This GSDMA antibody is generated from rabbits immunized with a KLH conjugated synthetic peptide between 66-94 amino acids from the N-terminal region of human GSDMA.

Dilution

WB~~1:1000
IHC-P~~1:50~100
FC~~1:10~50

Format

Purified polyclonal antibody supplied in PBS with 0.09% (W/V) sodium azide. This antibody is purified through a protein A column, followed by peptide affinity purification.

Storage

Maintain refrigerated at 2-8°C for up to 2 weeks. For long term storage store at -20°C in small aliquots to prevent freeze-thaw cycles.

Precautions

GSDMA Antibody (N-term) is for research use only and not for use in diagnostic or therapeutic procedures.

GSDMA Antibody (N-term) - Protein Information

Name GSDMA ([HGNC:13311](#))

Function [Gasdermin-A]: This form constitutes the precursor of the pore-forming protein and acts

as a sensor of infection: upon infection by *S.pyogenes*, specifically cleaved by *S.pyogenes* effector protein SpeB in epithelial cells, releasing the N-terminal moiety (Gasdermin-A, N- terminal) that binds to membranes and forms pores, triggering pyroptosis.

Cellular Location

[Gasdermin-A]: Cytoplasm, perinuclear region. Cytoplasm, cytosol
{ECO:0000250|UniProtKB:Q5Y4Y6}

Tissue Location

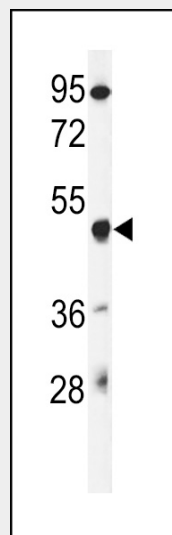
Expressed predominantly in the gastrointestinal tract and, at a lower level, in the skin. Also detected in mammary gland. In the gastrointestinal tract, mainly expressed in differentiated cells, including the differentiated cell layer of esophagus and mucus-secreting pit cells of the gastric epithelium Down-regulated in gastric cancer cells.

GSDMA Antibody (N-term) - Protocols

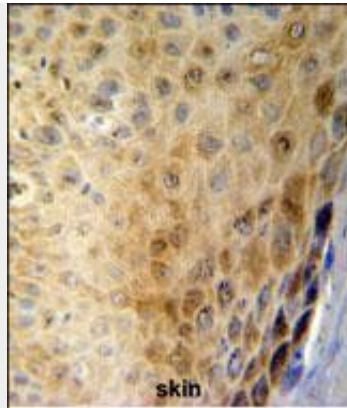
Provided below are standard protocols that you may find useful for product applications.

- [Western Blot](#)
- [Blocking Peptides](#)
- [Dot Blot](#)
- [Immunohistochemistry](#)
- [Immunofluorescence](#)
- [Immunoprecipitation](#)
- [Flow Cytometry](#)
- [Cell Culture](#)

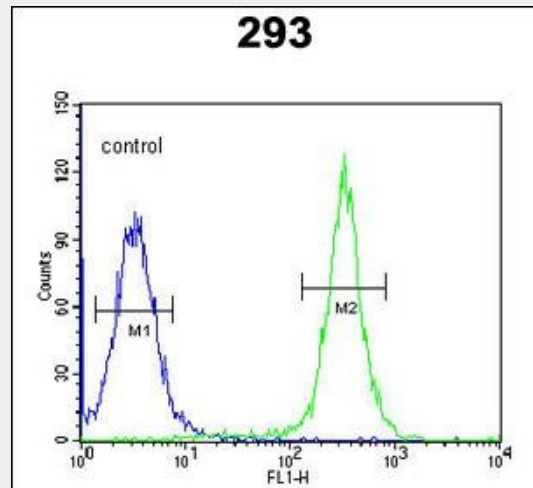
GSDMA Antibody (N-term) - Images



Western blot analysis of GSDMA Antibody (N-term) (Cat. #AP4887a) in mouse liver tissue lysates (35ug/lane). GSDMA (arrow) was detected using the purified Pab.



GSDMA Antibody (N-term) (Cat. #AP4887a) IHC analysis in formalin fixed and paraffin embedded human skin carcinoma followed by peroxidase conjugation of the secondary antibody and DAB staining. This data demonstrates the use of the GSDMA Antibody (N-term) for immunohistochemistry. Clinical relevance has not been evaluated.



GSDMA Antibody (N-term) (Cat. #AP4887a) flow cytometric analysis of 293 cells (right histogram) compared to a negative control cell (left histogram). FITC-conjugated goat-anti-rabbit secondary antibodies were used for the analysis.

GSDMA Antibody (N-term) - Background

GSDMA induces apoptosis.

GSDMA Antibody (N-term) - References

- Soranzo, N., et al. Nat. Genet. 41(11):1182-1190(2009)
- Saeki, N., et al. Genes Chromosomes Cancer 48(3):261-271(2009)
- Tamura, M., et al. Genomics 89(5):618-629(2007)