

Phospho-TSC2(S1096) Antibody
Affinity Purified Rabbit Polyclonal Antibody (Pab)
Catalog # AP3898a

Specification

Phospho-TSC2(S1096) Antibody - Product Information

Application	DB,E
Primary Accession	P49815
Other Accession	NP_000539.2
Reactivity	Human
Host	Rabbit
Clonality	Polyclonal
Isotype	Rabbit IgG
Calculated MW	200608

Phospho-TSC2(S1096) Antibody - Additional Information

Gene ID 7249

Other Names

Tuberin, Tuberous sclerosis 2 protein, TSC2, TSC4

Target/Specificity

This TSC2 Antibody is generated from rabbits immunized with a KLH conjugated synthetic phosphopeptide corresponding to amino acid residues surrounding S1096 of human TSC2.

Dilution

DB~~1:500

Format

Purified polyclonal antibody supplied in PBS with 0.09% (W/V) sodium azide. This antibody is purified through a protein A column, followed by peptide affinity purification.

Storage

Maintain refrigerated at 2-8°C for up to 2 weeks. For long term storage store at -20°C in small aliquots to prevent freeze-thaw cycles.

Precautions

Phospho-TSC2(S1096) Antibody is for research use only and not for use in diagnostic or therapeutic procedures.

Phospho-TSC2(S1096) Antibody - Protein Information

Name TSC2 {ECO:0000303|PubMed:7558029, ECO:0000312|HGNC:HGNC:12363}

Function Catalytic component of the TSC-TBC complex, a multiprotein complex that acts as a negative regulator of the canonical mTORC1 complex, an evolutionarily conserved central nutrient sensor that stimulates anabolic reactions and macromolecule biosynthesis to promote cellular

biomass generation and growth (PubMed:[12172553](#), PubMed:[12271141](#), PubMed:[12842888](#), PubMed:[12906785](#), PubMed:[15340059](#), PubMed:[22819219](#), PubMed:[24529379](#), PubMed:[28215400](#), PubMed:[33436626](#), PubMed:[35772404](#)). Within the TSC-TBC complex, TSC2 acts as a GTPase- activating protein (GAP) for the small GTPase RHEB, a direct activator of the protein kinase activity of mTORC1 (PubMed:[12172553](#), PubMed:[12820960](#), PubMed:[12842888](#), PubMed:[12906785](#), PubMed:[15340059](#), PubMed:[22819219](#), PubMed:[24529379](#), PubMed:[33436626](#)). In absence of nutrients, the TSC-TBC complex inhibits mTORC1, thereby preventing phosphorylation of ribosomal protein S6 kinase (RPS6KB1 and RPS6KB2) and EIF4EBP1 (4E-BP1) by the mTORC1 signaling (PubMed:[12172553](#), PubMed:[12271141](#), PubMed:[12842888](#), PubMed:[12906785](#), PubMed:[22819219](#), PubMed:[24529379](#), PubMed:[28215400](#), PubMed:[35772404](#)). The TSC-TBC complex is inactivated in response to nutrients, relieving inhibition of mTORC1 (PubMed:[12172553](#), PubMed:[24529379](#)). Involved in microtubule-mediated protein transport via its ability to regulate mTORC1 signaling (By similarity). Also stimulates the intrinsic GTPase activity of the Ras- related proteins RAP1A and RAB5 (By similarity).

Cellular Location

Lysosomal membrane; Peripheral membrane protein. Cytoplasm, cytosol Note=Recruited to lysosomal membranes in a RHEB-dependent process in absence of nutrients (PubMed:24529379). In response to insulin signaling and phosphorylation by PKB/AKT1, the complex dissociates from lysosomal membranes and relocates to the cytosol (PubMed:24529379)

Tissue Location

Liver, brain, heart, lymphocytes, fibroblasts, biliary epithelium, pancreas, skeletal muscle, kidney, lung and placenta.

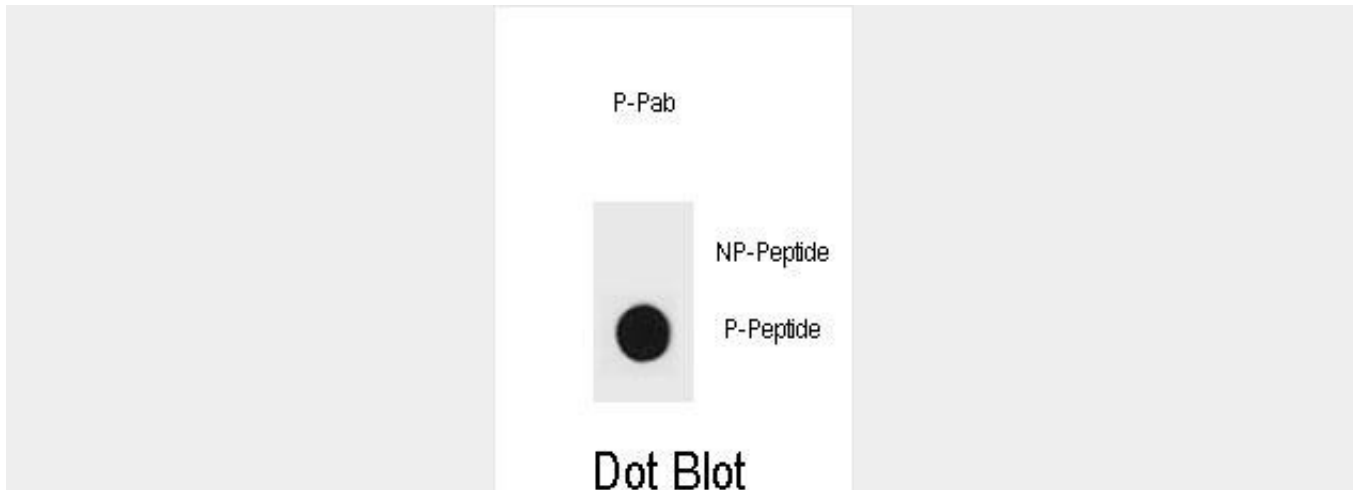
Phospho-TSC2(S1096) Antibody - Protocols

Provided below are standard protocols that you may find useful for product applications.

- [Western Blot](#)
- [Blocking Peptides](#)
- [Dot Blot](#)
- [Immunohistochemistry](#)
- [Immunofluorescence](#)
- [Immunoprecipitation](#)
- [Flow Cytometry](#)
- [Cell Culture](#)

Phospho-TSC2(S1096) Antibody - Images





Dot blot analysis of TSC2 Antibody (Phospho S1096) Phospho-specific Pab (Cat. #AP3898a) on nitrocellulose membrane. 50ng of Phospho-peptide or Non Phospho-peptide per dot were adsorbed. Antibody working concentrations are 0.6ug per ml.

Phospho-TSC2(S1096) Antibody - Background

Mutations in this gene lead to tuberous sclerosis complex. Its gene product is believed to be a tumor suppressor and is able to stimulate specific GTPases. The protein associates with hamartin in a cytosolic complex, possibly acting as a chaperone for hamartin. Alternative splicing results in multiple transcript variants encoding different isoforms.

Phospho-TSC2(S1096) Antibody - References

Slattery, M.L., et al. Carcinogenesis 31(9):1604-1611(2010)
Larson, Y., et al. J. Biol. Chem. 285(32):24987-24998(2010)
Mehta, M.S., et al. Breast Cancer Res. Treat. (2010) In press :
Mieulet, V., et al. Trends Mol Med 16(7):329-335(2010)
Liu, C.Y., et al. Carcinogenesis 31(7):1259-1263(2010)