

Phospho-MAP1LC3A(S12) Antibody
Affinity Purified Rabbit Polyclonal Antibody (Pab)
Catalog # AP3848a

Specification

Phospho-MAP1LC3A(S12) Antibody - Product Information

Application	DB,E
Primary Accession	O9H492 , O9GZQ8
Other Accession	O6XVN8 , O91VR7 , O2HJ23 , NP_115903.1 , NP_852610.1 , O6NX90 , O9H492
Reactivity	Human
Predicted	Zebrafish, Bovine, Mouse, Rat
Host	Rabbit
Clonality	Polyclonal
Isotype	Rabbit IgG

Phospho-MAP1LC3A(S12) Antibody - Additional Information

Other Names

Microtubule-associated proteins 1A/1B light chain 3A, Autophagy-related protein LC3 A, Autophagy-related ubiquitin-like modifier LC3 A, MAP1 light chain 3-like protein 1, MAP1A/MAP1B light chain 3 A, MAP1A/MAP1B LC3 A, Microtubule-associated protein 1 light chain 3 alpha, MAP1LC3A

Target/Specificity

This MAP1LC3A Antibody is generated from rabbits immunized with a KLH conjugated synthetic phosphopeptide corresponding to amino acid residues surrounding S12 of human MAP1LC3A.

Dilution

DB~~1:500

Format

Purified polyclonal antibody supplied in PBS with 0.09% (W/V) sodium azide. This antibody is purified through a protein A column, followed by peptide affinity purification.

Storage

Maintain refrigerated at 2-8°C for up to 2 weeks. For long term storage store at -20°C in small aliquots to prevent freeze-thaw cycles.

Precautions

Phospho-MAP1LC3A(S12) Antibody is for research use only and not for use in diagnostic or therapeutic procedures.

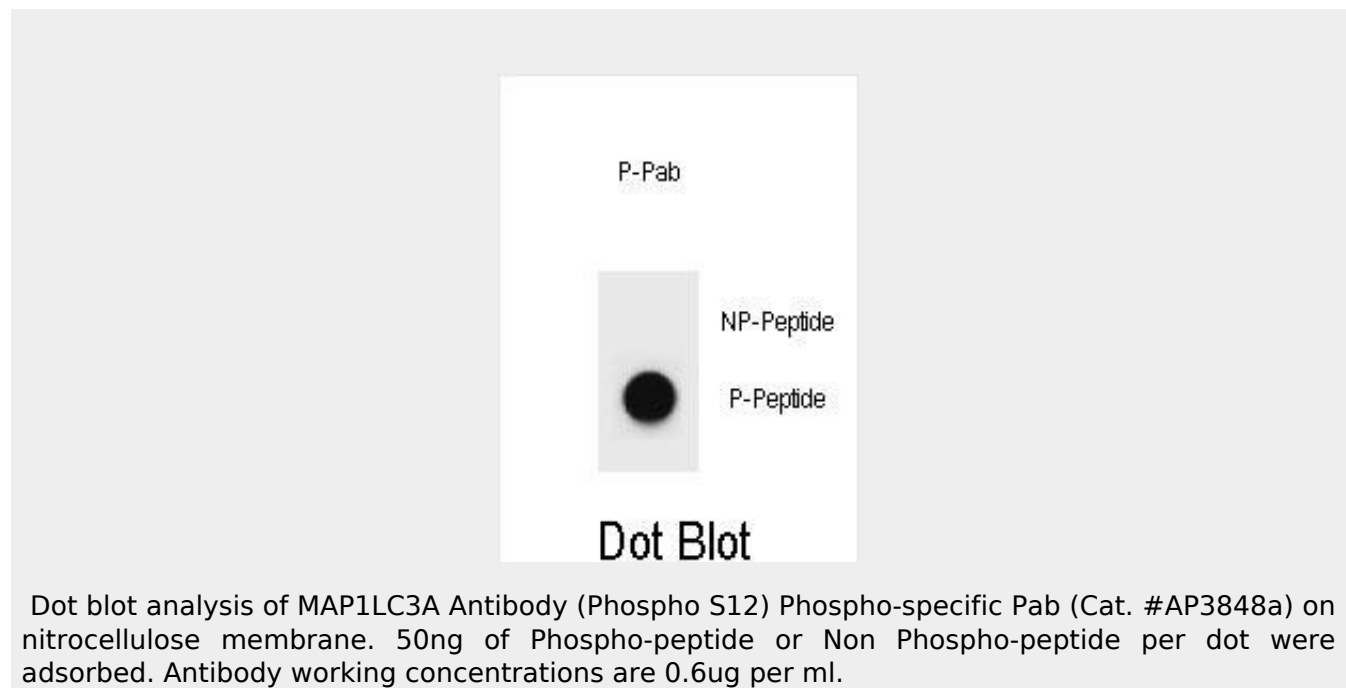
Phospho-MAP1LC3A(S12) Antibody - Protein Information

Phospho-MAP1LC3A(S12) Antibody - Protocols

Provided below are standard protocols that you may find useful for product applications.

- [Western Blot](#)
- [Blocking Peptides](#)
- [Dot Blot](#)
- [Immunohistochemistry](#)
- [Immunofluorescence](#)
- [Immunoprecipitation](#)
- [Flow Cytometry](#)
- [Cell Culture](#)

Phospho-MAP1LC3A(S12) Antibody - Images



Phospho-MAP1LC3A(S12) Antibody - Background

MAP1A and MAP1B are microtubule-associated proteins which mediate the physical interactions between microtubules and components of the cytoskeleton. MAP1A and MAP1B each consist of a heavy chain subunit and multiple light chain subunits. The protein encoded by this gene is one of the light chain subunits and can associate with either MAP1A or MAP1B. Two transcript variants encoding different isoforms have been found for this gene.

Phospho-MAP1LC3A(S12) Antibody - References

Scherz-Shouval, R., et al. Proc. Natl. Acad. Sci. U.S.A. 107(43):18511-18516(2010)
Cherra, S.J. III, et al. J. Cell Biol. 190(4):533-539(2010)
Gao, C., et al. Nat. Cell Biol. 12(8):781-790(2010)
Namgoong, G.M., et al. J. Biol. Chem. 285(31):23829-23841(2010)
Jiang, H., et al. Biochem. Biophys. Res. Commun. 395(4):471-476(2010)