

Phospho-bcl-2(S70) Antibody
Affinity Purified Rabbit Polyclonal Antibody (Pab)
Catalog # AP3789a

Specification

Phospho-bcl-2(S70) Antibody - Product Information

Application	WB, DB,E
Primary Accession	P10415
Other Accession	NP_000624.2
Reactivity	Human
Host	Rabbit
Clonality	Polyclonal
Isotype	Rabbit IgG
Calculated MW	26266

Phospho-bcl-2(S70) Antibody - Additional Information

Gene ID 596

Other Names

Apoptosis regulator Bcl-2, BCL2

Target/Specificity

This bcl-2 Antibody is generated from rabbits immunized with a KLH conjugated synthetic phosphopeptide corresponding to amino acid residues surrounding S70 of human bcl-2.

Dilution

WB~~1:1000

DB~~1:500

Format

Purified polyclonal antibody supplied in PBS with 0.09% (W/V) sodium azide. This antibody is purified through a protein A column, followed by peptide affinity purification.

Storage

Maintain refrigerated at 2-8°C for up to 2 weeks. For long term storage store at -20°C in small aliquots to prevent freeze-thaw cycles.

Precautions

Phospho-bcl-2(S70) Antibody is for research use only and not for use in diagnostic or therapeutic procedures.

Phospho-bcl-2(S70) Antibody - Protein Information

Name BCL2

Function Suppresses apoptosis in a variety of cell systems including factor-dependent lymphohematopoietic and neural cells (PubMed:[1508712](#), PubMed:[8183370](#)). Regulates cell death

by controlling the mitochondrial membrane permeability (PubMed:[11368354](#)). Appears to function in a feedback loop system with caspases (PubMed:[11368354](#)). Inhibits caspase activity either by preventing the release of cytochrome c from the mitochondria and/or by binding to the apoptosis-activating factor (APAF-1) (PubMed:[11368354](#)). Also acts as an inhibitor of autophagy: interacts with BECN1 and AMBRA1 during non-starvation conditions and inhibits their autophagy function (PubMed:[18570871](#), PubMed:[20889974](#), PubMed:[21358617](#)). May attenuate inflammation by impairing NLRP1- inflammasome activation, hence CASP1 activation and IL1B release (PubMed:[17418785](#)).

Cellular Location

Mitochondrion outer membrane; Single-pass membrane protein. Nucleus membrane; Single-pass membrane protein. Endoplasmic reticulum membrane; Single-pass membrane protein. Cytoplasm {ECO:0000250|UniProtKB:P10417}

Tissue Location

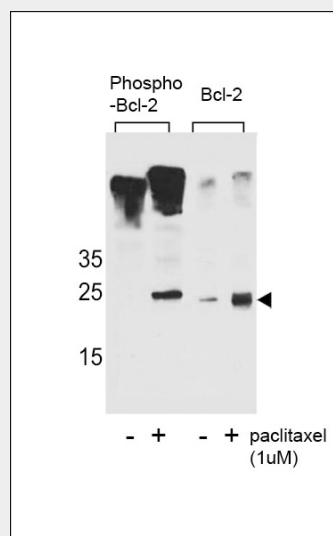
Expressed in a variety of tissues.

Phospho-bcl-2(S70) Antibody - Protocols

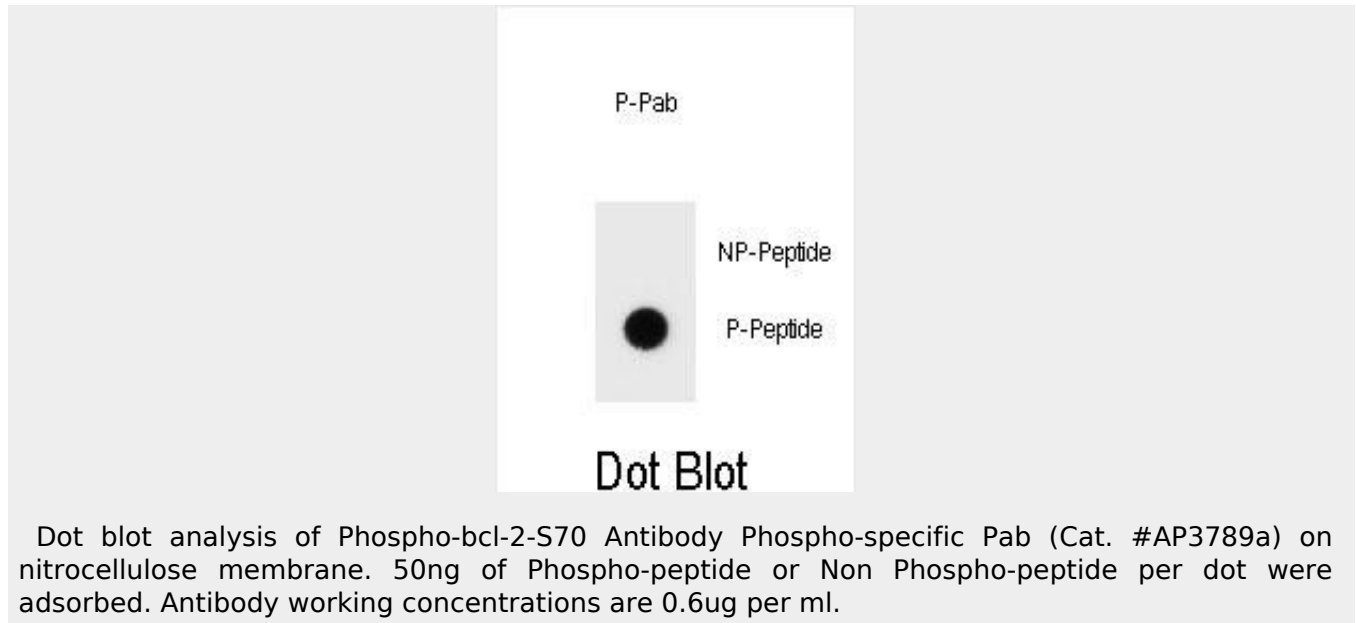
Provided below are standard protocols that you may find useful for product applications.

- [Western Blot](#)
- [Blocking Peptides](#)
- [Dot Blot](#)
- [Immunohistochemistry](#)
- [Immunofluorescence](#)
- [Immunoprecipitation](#)
- [Flow Cytometry](#)
- [Cell Culture](#)

Phospho-bcl-2(S70) Antibody - Images



Western blot analysis of extracts from Jurkat cells, untreated or treated with paclitaxel, using phospho-Bcl2(Ser70)(left) or Bcl2 antibody(right).



Dot blot analysis of Phospho-bcl-2-S70 Antibody Phospho-specific Pab (Cat. #AP3789a) on nitrocellulose membrane. 50ng of Phospho-peptide or Non Phospho-peptide per dot were adsorbed. Antibody working concentrations are 0.6ug per ml.

Phospho-bcl-2(S70) Antibody - Background

This gene encodes an integral outer mitochondrial membrane protein that blocks the apoptotic death of some cells such as lymphocytes. Constitutive expression of BCL2, such as in the case of translocation of BCL2 to Ig heavy chain locus, is thought to be the cause of follicular lymphoma. Two transcript variants, produced by alternate splicing, differ in their C-terminal ends. [provided by RefSeq].

Phospho-bcl-2(S70) Antibody - References

Feng, H., et al. Cancer Cell 18(4):353-366(2010)
Azad, N., et al. Ann. N. Y. Acad. Sci. 1203, 1-6 (2010) :
Dubikov, A.I., et al. Scand. J. Rheumatol. 39(5):368-372(2010)
Yu, B., et al. J. Exp. Clin. Cancer Res. 29, 107 (2010) :
Trisciuglio, D., et al. PLoS ONE 5 (7), E11772 (2010) :