

**Phospho-rat BAD(S109) Antibody**  
**Affinity Purified Rabbit Polyclonal Antibody (Pab)**  
**Catalog # AP3777n**

## Specification

---

### Phospho-rat BAD(S109) Antibody - Product Information

Application	DB,E
Primary Accession	<a href="#">O35147</a>
Other Accession	<a href="#">NP_073189.1</a>
Reactivity	Rat
Host	Rabbit
Clonality	Polyclonal
Isotype	Rabbit IgG
Calculated MW	22228

### Phospho-rat BAD(S109) Antibody - Additional Information

**Gene ID** 64639

#### Other Names

Bcl2-associated agonist of cell death, BAD, Bcl-2-binding component 6, Bcl-xL/Bcl-2-associated death promoter, Bcl2 antagonist of cell death, Bad

#### Target/Specificity

This rat BAD Antibody is generated from rabbits immunized with a KLH conjugated synthetic phosphopeptide corresponding to amino acid residues surrounding S109 of rat BAD.

#### Dilution

DB~~1:500

#### Format

Purified polyclonal antibody supplied in PBS with 0.09% (W/V) sodium azide. This antibody is purified through a protein A column, followed by peptide affinity purification.

#### Storage

Maintain refrigerated at 2-8°C for up to 2 weeks. For long term storage store at -20°C in small aliquots to prevent freeze-thaw cycles.

#### Precautions

Phospho-rat BAD(S109) Antibody is for research use only and not for use in diagnostic or therapeutic procedures.

### Phospho-rat BAD(S109) Antibody - Protein Information

**Name** Bad

**Function** Promotes cell death. Successfully competes for the binding to Bcl-X(L), Bcl-2 and Bcl-W, thereby affecting the level of heterodimerization of these proteins with BAX. Can reverse the death

repressor activity of Bcl-X(L), but not that of Bcl-2 (By similarity). Appears to act as a link between growth factor receptor signaling and the apoptotic pathways.

#### Cellular Location

Mitochondrion outer membrane. Cytoplasm {ECO:0000250|UniProtKB:Q61337}. Note=Colocalizes with HIF3A in the cytoplasm. Upon phosphorylation, locates to the cytoplasm {ECO:0000250|UniProtKB:Q61337}

#### Tissue Location

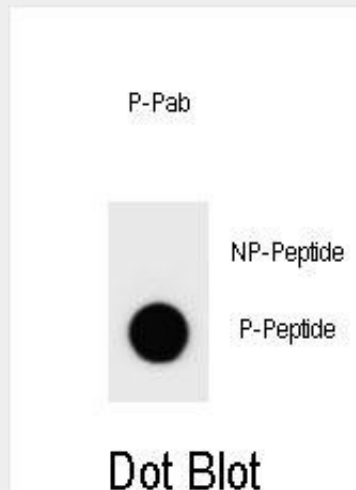
Expressed in all tissues tested, including brain, liver, spleen and heart. In the brain, restricted to epithelial cells of the choroid plexus. Isoform alpha is the more abundant form

### Phospho-rat BAD(S109) Antibody - Protocols

Provided below are standard protocols that you may find useful for product applications.

- [Western Blot](#)
- [Blocking Peptides](#)
- [Dot Blot](#)
- [Immunohistochemistry](#)
- [Immunofluorescence](#)
- [Immunoprecipitation](#)
- [Flow Cytometry](#)
- [Cell Culture](#)

### Phospho-rat BAD(S109) Antibody - Images



Dot blot analysis of Phospho-rat BAD-S109 Antibody Phospho-specific Pab (Cat. #AP3777n) on nitrocellulose membrane. 50ng of Phospho-peptide or Non Phospho-peptide per dot were adsorbed. Antibody working concentrations are 0.6ug per ml.

### Phospho-rat BAD(S109) Antibody - Background

Bad may be involved in induction of programmed cell death [RGD].

### Phospho-rat BAD(S109) Antibody - References

Huang, C., et al. J. Surg. Res. 164 (1), E1-E11 (2010) :

Ahn, S., et al. J. Biol. Chem. 284(13):8855-8865(2009)  
Koh, P.O. Am. J. Chin. Med. 37(5):867-876(2009)  
Surgucheva, I., et al. J. Biol. Chem. 283(52):36377-36385(2008)  
Tommasini, I., et al. J. Immunol. 181(8):5637-5645(2008)