

Phospho-BAD(S74) Antibody
Affinity Purified Rabbit Polyclonal Antibody (Pab)
Catalog # AP3777f

Specification

Phospho-BAD(S74) Antibody - Product Information

Application	DB,E
Primary Accession	O92934
Other Accession	NP_004313.1
Reactivity	Human
Host	Rabbit
Clonality	Polyclonal
Isotype	Rabbit IgG
Calculated MW	18392

Phospho-BAD(S74) Antibody - Additional Information

Gene ID 572

Other Names

Bcl2-associated agonist of cell death, BAD, Bcl-2-binding component 6, Bcl-2-like protein 8, Bcl2-L-8, Bcl-xL/Bcl-2-associated death promoter, Bcl2 antagonist of cell death, BAD, BBC6, BCL2L8

Target/Specificity

This BAD Antibody is generated from rabbits immunized with a KLH conjugated synthetic phosphopeptide corresponding to amino acid residues surrounding S74 of human BAD.

Dilution

DB~~1:500

Format

Purified polyclonal antibody supplied in PBS with 0.09% (W/V) sodium azide. This antibody is purified through a protein A column, followed by peptide affinity purification.

Storage

Maintain refrigerated at 2-8°C for up to 2 weeks. For long term storage store at -20°C in small aliquots to prevent freeze-thaw cycles.

Precautions

Phospho-BAD(S74) Antibody is for research use only and not for use in diagnostic or therapeutic procedures.

Phospho-BAD(S74) Antibody - Protein Information

Name BAD

Synonyms BBC6, BCL2L8

Function Promotes cell death. Successfully competes for the binding to Bcl-X(L), Bcl-2 and Bcl-W, thereby affecting the level of heterodimerization of these proteins with BAX. Can reverse the death repressor activity of Bcl-X(L), but not that of Bcl-2 (By similarity). Appears to act as a link between growth factor receptor signaling and the apoptotic pathways.

Cellular Location

Mitochondrion outer membrane. Cytoplasm {ECO:0000250|UniProtKB:Q61337}. Note=Colocalizes with HIF3A in the cytoplasm (By similarity). Upon phosphorylation, locates to the cytoplasm. {ECO:0000250|UniProtKB:Q61337}

Tissue Location

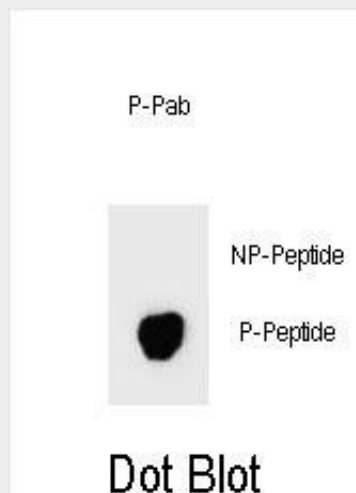
Expressed in a wide variety of tissues.

Phospho-BAD(S74) Antibody - Protocols

Provided below are standard protocols that you may find useful for product applications.

- [Western Blot](#)
- [Blocking Peptides](#)
- [Dot Blot](#)
- [Immunohistochemistry](#)
- [Immunofluorescence](#)
- [Immunoprecipitation](#)
- [Flow Cytometry](#)
- [Cell Culture](#)

Phospho-BAD(S74) Antibody - Images



Dot blot analysis of Phospho-BAD-S74 Antibody Phospho-specific Pab (Cat. #AP3777f) on nitrocellulose membrane. 50ng of Phospho-peptide or Non Phospho-peptide per dot were adsorbed. Antibody working concentrations are 0.6ug per ml.

Phospho-BAD(S74) Antibody - Background

The protein encoded by this gene is a member of the BCL-2 family. BCL-2 family members are known to be regulators of programmed cell death. This protein positively regulates cell apoptosis by forming heterodimers with BCL-xL and BCL-2, and reversing their death repressor activity. Proapoptotic activity of

this protein is regulated through its phosphorylation. Protein kinases AKT and MAP kinase, as well as protein phosphatase calcineurin were found to be involved in the regulation of this protein. Alternative splicing of this gene results in two transcript variants which encode the same isoform. [provided by RefSeq].

Phospho-BAD(S74) Antibody - References

Chen, B., et al. Am. J. Physiol., Cell Physiol. 299 (5), C968-C976 (2010) :
Bailey, S.D., et al. Diabetes Care 33(10):2250-2253(2010)
Galmiche, A., et al. Mol. Cancer Res. 8(8):1116-1125(2010)
Cerioni, L., et al. Methods Mol. Biol. 648, 291-301 (2010) :
Yu, B., et al. J. Exp. Clin. Cancer Res. 29, 107 (2010) :