

**Phospho-JMJD1B(S291) Antibody**  
**Affinity Purified Rabbit Polyclonal Antibody (Pab)**  
**Catalog # AP3741a**

**Specification**

---

**Phospho-JMJD1B(S291) Antibody - Product Information**

Application	DB,E
Primary Accession	<a href="#">O7LBC6</a>
Other Accession	<a href="#">NP_057688.2</a>
Reactivity	Human
Host	Rabbit
Clonality	Polyclonal
Isotype	Rabbit IgG
Calculated MW	191581

**Phospho-JMJD1B(S291) Antibody - Additional Information**

**Gene ID** 51780

**Other Names**

Lysine-specific demethylase 3B, 11411-, JmjC domain-containing histone demethylation protein 2B, Jumonji domain-containing protein 1B, Nuclear protein 5qNCA, KDM3B, C5orf7, JHDM2B, JMJD1B, KIAA1082

**Target/Specificity**

This JMJD1B Antibody is generated from rabbits immunized with a KLH conjugated synthetic phosphopeptide corresponding to amino acid residues surrounding S291 of human JMJD1B.

**Dilution**

DB~~1:500

**Format**

Purified polyclonal antibody supplied in PBS with 0.09% (W/V) sodium azide. This antibody is purified through a protein A column, followed by peptide affinity purification.

**Storage**

Maintain refrigerated at 2-8°C for up to 2 weeks. For long term storage store at -20°C in small aliquots to prevent freeze-thaw cycles.

**Precautions**

Phospho-JMJD1B(S291) Antibody is for research use only and not for use in diagnostic or therapeutic procedures.

**Phospho-JMJD1B(S291) Antibody - Protein Information**

**Name** KDM3B

**Synonyms** C5orf7, JHDM2B, JMJD1B, KIAA1082

**Function** Histone demethylase that specifically demethylates 'Lys-9' of histone H3, thereby playing a central role in histone code. Demethylation of Lys residue generates formaldehyde and succinate. May have tumor suppressor activity.

**Cellular Location**

Nucleus.

**Tissue Location**

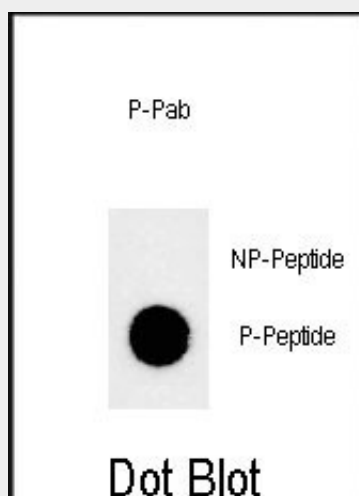
Ubiquitous. Highly expressed in placenta, skeletal muscle, kidney, heart and liver.

**Phospho-JMJD1B(S291) Antibody - Protocols**

Provided below are standard protocols that you may find useful for product applications.

- [Western Blot](#)
- [Blocking Peptides](#)
- [Dot Blot](#)
- [Immunohistochemistry](#)
- [Immunofluorescence](#)
- [Immunoprecipitation](#)
- [Flow Cytometry](#)
- [Cell Culture](#)

**Phospho-JMJD1B(S291) Antibody - Images**



Dot blot analysis of anti-Phospho-JMJD1B-pS291 Phospho-specific Pab (Cat. #AP3741a) on nitrocellulose membrane. 50ng of Phospho-peptide or Non Phospho-peptide per dot were adsorbed. Antibody working concentrations are 0.5ug per ml.

**Phospho-JMJD1B(S291) Antibody - References**

Rose, J. Phd, et al. Mol. Med. (2010) In press :  
Olsen, J.V., et al. Cell 127(3):635-648(2006)  
Olsen, J.V., et al. Cell 127(3):635-648(2006)  
Yamane, K., et al. Cell 125(3):483-495(2006)  
Andersen, J.S., et al. Nature 433(7021):77-83(2005)