

**Phospho-PRL(S163) Antibody**  
**Affinity Purified Rabbit Polyclonal Antibody (Pab)**  
**Catalog # AP3573a**

**Specification**

---

**Phospho-PRL(S163) Antibody - Product Information**

Application	DB,E
Primary Accession	<a href="#">P01236</a>
Other Accession	<a href="#">NP_000939</a>
Reactivity	Human
Host	Rabbit
Clonality	Polyclonal
Isotype	Rabbit IgG
Calculated MW	25876

**Phospho-PRL(S163) Antibody - Additional Information**

**Gene ID** 5617

**Other Names**

Prolactin, PRL, PRL

**Target/Specificity**

This PRL Antibody is generated from rabbits immunized with a KLH conjugated synthetic phosphopeptide corresponding to amino acid residues surrounding S163 of human PRL.

**Dilution**

DB~~1:500

**Format**

Purified polyclonal antibody supplied in PBS with 0.09% (W/V) sodium azide. This antibody is purified through a protein A column, followed by peptide affinity purification.

**Storage**

Maintain refrigerated at 2-8°C for up to 2 weeks. For long term storage store at -20°C in small aliquots to prevent freeze-thaw cycles.

**Precautions**

Phospho-PRL(S163) Antibody is for research use only and not for use in diagnostic or therapeutic procedures.

**Phospho-PRL(S163) Antibody - Protein Information**

**Name** PRL

**Function** Prolactin acts primarily on the mammary gland by promoting lactation.

**Cellular Location**

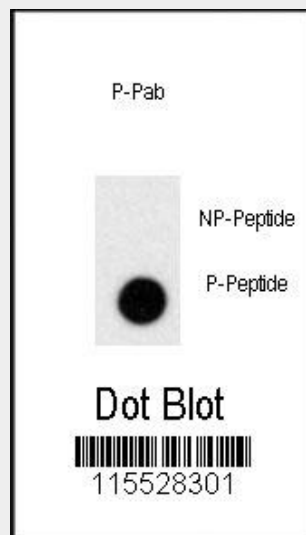
Secreted.

### Phospho-PRL(S163) Antibody - Protocols

Provided below are standard protocols that you may find useful for product applications.

- [Western Blot](#)
- [Blocking Peptides](#)
- [Dot Blot](#)
- [Immunohistochemistry](#)
- [Immunofluorescence](#)
- [Immunoprecipitation](#)
- [Flow Cytometry](#)
- [Cell Culture](#)

### Phospho-PRL(S163) Antibody - Images



Dot blot analysis of anti-Phospho-PRL-pS163 Antibody (Cat.#AP3573a) on nitrocellulose membrane. 50ng of Phospho-peptide or Non Phospho-peptide per dot were adsorbed. Antibody working concentrations are 0.5ug per ml.

### Phospho-PRL(S163) Antibody - Background

Prolactin (PRL) acts primarily on the mammary gland by promoting lactation.

### Phospho-PRL(S163) Antibody - References

Liu,M.L., Int J Artif Organs 31 (4), 303-308 (2008)  
Carver,K.C.,Mol. Cancer Res. 6 (4), 634-643 (2008)  
Swaminathan,G., J. Endocrinol. 196 (2), R1-R7 (2008)