

**Phospho-NOMO1(S1205) Antibody**  
**Affinity Purified Rabbit Polyclonal Antibody (Pab)**  
**Catalog # AP3565a**

## Specification

---

### Phospho-NOMO1(S1205) Antibody - Product Information

Application	DB,E
Primary Accession	<a href="#">Q15155</a>
Other Accession	<a href="#">P69849</a> , <a href="#">Q5JPE7</a>
Reactivity	Human
Host	Rabbit
Clonality	Polyclonal
Isotype	Rabbit IgG
Calculated MW	134324

### Phospho-NOMO1(S1205) Antibody - Additional Information

**Gene ID** 23420

#### Other Names

Nodal modulator 1, pM5 protein, NOMO1, PM5

#### Target/Specificity

This NOMO1 Antibody is generated from rabbits immunized with a KLH conjugated synthetic phosphopeptide corresponding to amino acid residues surrounding S1205 of human NOMO1.

#### Dilution

DB~~1:500

#### Format

Purified polyclonal antibody supplied in PBS with 0.09% (W/V) sodium azide. This antibody is purified through a protein A column, followed by peptide affinity purification.

#### Storage

Maintain refrigerated at 2-8°C for up to 2 weeks. For long term storage store at -20°C in small aliquots to prevent freeze-thaw cycles.

#### Precautions

Phospho-NOMO1(S1205) Antibody is for research use only and not for use in diagnostic or therapeutic procedures.

### Phospho-NOMO1(S1205) Antibody - Protein Information

**Name** NOMO1

**Synonyms** PM5

**Function** Component of the multi-pass translocon (MPT) complex that mediates insertion of

multi-pass membrane proteins into the lipid bilayer of membranes (PubMed:[32820719](#), PubMed:[36261522](#)). The MPT complex takes over after the SEC61 complex: following membrane insertion of the first few transmembrane segments of proteins by the SEC61 complex, the MPT complex occludes the lateral gate of the SEC61 complex to promote insertion of subsequent transmembrane regions (PubMed:[36261522](#)).

#### Cellular Location

Endoplasmic reticulum membrane; Single-pass type I membrane protein

#### Tissue Location

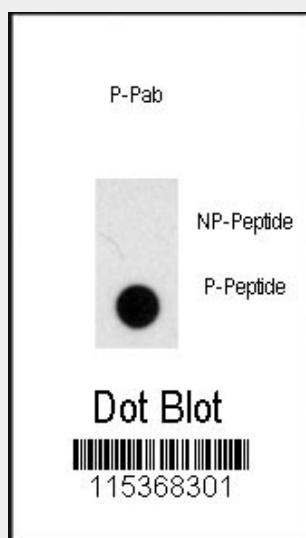
Expressed in colon tumor tissue and in adjacent normal colonic mucosa.

### Phospho-NOMO1(S1205) Antibody - Protocols

Provided below are standard protocols that you may find useful for product applications.

- [Western Blot](#)
- [Blocking Peptides](#)
- [Dot Blot](#)
- [Immunohistochemistry](#)
- [Immunofluorescence](#)
- [Immunoprecipitation](#)
- [Flow Cytometry](#)
- [Cell Culture](#)

### Phospho-NOMO1(S1205) Antibody - Images



Dot blot analysis of anti-Phospho-NOMO1-pS1205 Antibody (Cat.#AP3565a) on nitrocellulose membrane. 50ng of Phospho-peptide or Non Phospho-peptide per dot were adsorbed. Antibody working concentrations are 0.5ug per ml.

### Phospho-NOMO1(S1205) Antibody - Background

NOMO1 was originally thought to be related to the collagenase family. The gene encoding NOMO1 is one of three highly similar genes in a region of duplication located on the p arm of chromosome 16. These three genes encode closely related proteins that may have the same function. The protein encoded by one of these genes has been identified as part of a protein complex that

participates in the Nodal signaling pathway during vertebrate development.

**Phospho-NOMO1(S1205) Antibody - References**

Blackshaw,S., PLoS Biol. 2 (9), E247 (2004)