

Phospho-BRAF(T400) Antibody
Affinity Purified Rabbit Polyclonal Antibody (Pab)
Catalog # AP3513a

Specification

Phospho-BRAF(T400) Antibody - Product Information

Application	DB,E
Primary Accession	P15056
Other Accession	P28028
Reactivity	Human
Predicted	Mouse
Host	Rabbit
Clonality	Polyclonal
Isotype	Rabbit IgG

Phospho-BRAF(T400) Antibody - Additional Information

Gene ID 673

Other Names

Serine/threonine-protein kinase B-raf, Proto-oncogene B-Raf, p94, v-Raf murine sarcoma viral oncogene homolog B1, BRAF, BRAF1, RAFB1

Target/Specificity

This BRAF Antibody is generated from rabbits immunized with a KLH conjugated synthetic phosphopeptide corresponding to amino acid residues surrounding T400 of human BRAF.

Dilution

DB~~1:500

Format

Purified polyclonal antibody supplied in PBS with 0.09% (W/V) sodium azide. This antibody is purified through a protein A column, followed by peptide affinity purification.

Storage

Maintain refrigerated at 2-8°C for up to 2 weeks. For long term storage store at -20°C in small aliquots to prevent freeze-thaw cycles.

Precautions

Phospho-BRAF(T400) Antibody is for research use only and not for use in diagnostic or therapeutic procedures.

Phospho-BRAF(T400) Antibody - Protein Information

Name BRAF ([HGNC:1097](#))

Synonyms BRAF1, RAFB1

Function Protein kinase involved in the transduction of mitogenic signals from the cell membrane to the nucleus (Probable). Phosphorylates MAP2K1, and thereby activates the MAP kinase signal transduction pathway (PubMed:[21441910](#), PubMed:[29433126](#)). Phosphorylates PFKFB2 (PubMed:[36402789](#)). May play a role in the postsynaptic responses of hippocampal neurons (PubMed:[1508179](#)).

Cellular Location

Nucleus. Cytoplasm. Cell membrane. Note=Colocalizes with RGS14 and RAF1 in both the cytoplasm and membranes.

Tissue Location

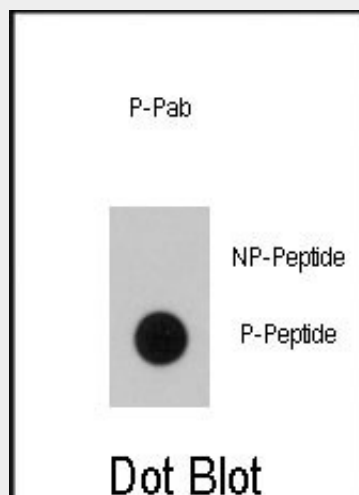
Brain and testis.

Phospho-BRAF(T400) Antibody - Protocols

Provided below are standard protocols that you may find useful for product applications.

- [Western Blot](#)
- [Blocking Peptides](#)
- [Dot Blot](#)
- [Immunohistochemistry](#)
- [Immunofluorescence](#)
- [Immunoprecipitation](#)
- [Flow Cytometry](#)
- [Cell Culture](#)

Phospho-BRAF(T400) Antibody - Images



Dot blot analysis of anti-BRAF Phospho-specific Pab (Cat.#AP3513a) on nitrocellulose membrane. 50ng of Phospho-peptide or Non Phospho-peptide per dot were adsorbed. Antibody working concentrations are 0.5ug per ml.

Phospho-BRAF(T400) Antibody - Background

BRAF is involved in the transduction of mitogenic signals from the cell membrane to the nucleus. It may play a role in the postsynaptic responses of hippocampal neurons. Defects in BRAF are a cause of cardiofaciocutaneous syndrome (CFC syndrome), and a wide range of cancers such as lung cancer, non-Hodgkins lymphoma, and colorectal cancer.

Phospho-BRAF(T400) Antibody - References

- Loewe, R., et al., J. Invest. Dermatol. 123(4):733-736 (2004).
Yamaguchi, T., et al., J. Biol. Chem. 279(39):40419-40430 (2004).
Frattini, M., et al., Oncogene 23(44):7436-7440 (2004).
Tsavachidou, D., et al., Cancer Res. 64(16):5556-5559 (2004).
Gear, H., et al., Invest. Ophthalmol. Vis. Sci. 45(8):2484-2488 (2004).

Phospho-BRAF(T400) Antibody - Citations

- [Calcineurin increases glucose activation of ERK1/2 by reversing negative feedback.](#)