

**Phospho-MEF2C(S387) Antibody**  
**Affinity Purified Rabbit Polyclonal Antibody (Pab)**  
**Catalog # AP3385a**

**Specification**

---

**Phospho-MEF2C(S387) Antibody - Product Information**

Application	DB,E
Primary Accession	<a href="#">Q06413</a>
Other Accession	<a href="#">A4UTP7</a> , <a href="#">A0A096MJY4</a>
Reactivity	Human
Predicted	Pig, Rat
Host	Rabbit
Clonality	Polyclonal
Isotype	Rabbit IgG
Calculated MW	51221

**Phospho-MEF2C(S387) Antibody - Additional Information**

**Gene ID** 4208

**Other Names**

Myocyte-specific enhancer factor 2C, MEF2C

**Target/Specificity**

This MEF2C Antibody is generated from rabbits immunized with a KLH conjugated synthetic phosphopeptide corresponding to amino acid residues surrounding S387 of human MEF2C.

**Dilution**

DB~~1:500

**Format**

Purified polyclonal antibody supplied in PBS with 0.09% (W/V) sodium azide. This antibody is purified through a protein A column, followed by peptide affinity purification.

**Storage**

Maintain refrigerated at 2-8°C for up to 2 weeks. For long term storage store at -20°C in small aliquots to prevent freeze-thaw cycles.

**Precautions**

Phospho-MEF2C(S387) Antibody is for research use only and not for use in diagnostic or therapeutic procedures.

**Phospho-MEF2C(S387) Antibody - Protein Information**

**Name** MEF2C ([HGNC:6996](#))

**Function** Transcription activator which binds specifically to the MEF2 element present in the regulatory regions of many muscle-specific genes. Controls cardiac morphogenesis and

myogenesis, and is also involved in vascular development. Enhances transcriptional activation mediated by SOX18. Plays an essential role in hippocampal-dependent learning and memory by suppressing the number of excitatory synapses and thus regulating basal and evoked synaptic transmission. Crucial for normal neuronal development, distribution, and electrical activity in the neocortex. Necessary for proper development of megakaryocytes and platelets and for bone marrow B-lymphopoiesis. Required for B-cell survival and proliferation in response to BCR stimulation, efficient IgG1 antibody responses to T-cell-dependent antigens and for normal induction of germinal center B-cells. May also be involved in neurogenesis and in the development of cortical architecture (By similarity). Isoforms that lack the repressor domain are more active than isoform 1.

#### Cellular Location

Nucleus {ECO:0000250|UniProtKB:A0A096MJY4}. Cytoplasm, sarcoplasm {ECO:0000250|UniProtKB:A0A096MJY4}

#### Tissue Location

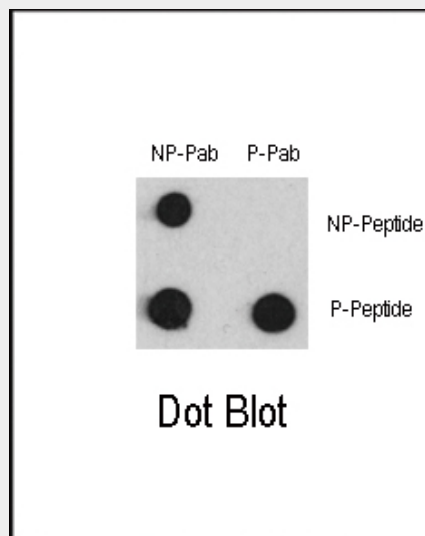
Expressed in brain and skeletal muscle.

### Phospho-MEF2C(S387) Antibody - Protocols

Provided below are standard protocols that you may find useful for product applications.

- [Western Blot](#)
- [Blocking Peptides](#)
- [Dot Blot](#)
- [Immunohistochemistry](#)
- [Immunofluorescence](#)
- [Immunoprecipitation](#)
- [Flow Cytometry](#)
- [Cell Culture](#)

### Phospho-MEF2C(S387) Antibody - Images



Dot blot analysis of anti-Phospho-MEF2C-pS387 Antibody (Cat. #AP3385a) and anti-MEF2C Non Phospho-specific Pab on nitrocellulose membrane. 50ng of Phospho-peptide or Non Phospho-peptide per dot were adsorbed. Antibody working concentrations are 0.5ug per ml.

### Phospho-MEF2C(S387) Antibody - Background

MEF2C is a transcription activator which binds specifically to the MEF2 element present in the regulatory regions of many muscle-specific genes. This protein controls cardiac morphogenesis and myogenesis, and is also involved in vascular development. It may also be involved in neurogenesis and in the development of cortical architecture.

#### **Phospho-MEF2C(S387) Antibody - References**

- Konig, S., et al., J. Biol. Chem. 279(27):28187-28196 (2004).  
Maeda, T., et al., J. Biol. Chem. 277(50):48889-48898 (2002).  
Maeda, T., et al., Biochem. Biophys. Res. Commun. 294(4):791-797 (2002).  
Janson, C.G., et al., Brain Res. Mol. Brain Res. 97(1):70-82 (2001).  
Krainc, D., et al., Genomics 29(3):809-811 (1995).